



MAY 1998

6306.0

# EMPLOYEE EARNINGS AND HOURS

AUSTRALIA

EMBARGO: 11:30AM (CANBERRA TIME) THURS 25 MAR 1999

## CONTENTS

	<i>page</i>
Notes .....	2
List of tables .....	3
Summary of findings .....	4

## TABLES

All employees .....	9
Full-time adult employees .....	18
Non-managerial employees .....	26
Full-time adult non-managerial employees .....	28
Private sector full-time adult non-managerial employees .....	49

## ADDITIONAL INFORMATION

Explanatory notes .....	54
Technical notes .....	57
Glossary .....	65

- For further information about these and related statistics, contact Renae Gibson on Perth 08 9360 5305 or any ABS office shown on the back of this publication.

## NOTES

### FORTHCOMING ISSUES

ISSUE	EXPECTED RELEASE DATE
May 2000	March 2001

### NOTES ON ESTIMATES

Estimates in this publication vary slightly from those obtained from the quarterly publications, *Average Weekly Earnings, Australia, Preliminary* (Cat. no. 6301.0) and *Average Weekly Earnings States and Australia* (Cat. no. 6302.0) because of methodological differences between the two surveys.

### UNPUBLISHED DATA

In addition to the information contained in this publication, a large range of unpublished data from the Survey of Employee Earnings and Hours may be made available on request. Tables can be specifically tailored to clients' requirements. Refer to the end of this publication for more information regarding the services available.

### SAMPLING ERRORS

For information on sampling errors, see the Technical Notes on page 57 of this publication.

### SYMBOLS AND OTHER USAGES

ABS	Australian Bureau of Statistics
ANZSIC	Australian and New Zealand Standard Industrial Classification
ASCO	Australian Standard Classification of Occupations
ASIC	Australian Standard Industrial Classification
EEH	Survey of Employee Earnings and Hours
n.p.	Not published
n.a.	Not available
*	Subject to high relative standard error. See paragraph 12 of the Technical Notes.
—	Nil or rounded to zero
..	Not applicable

W. McLennan  
Australian Statistician

## LIST OF TABLES

Page

### ALL EMPLOYEES

1	Weekly total earnings, distribution, occupation .....	9
2	Average weekly earnings, category of employee, composition .....	12
3	Average weekly total earnings, category of employee, occupation .....	13
4	Average weekly total earnings, category of employee, industry .....	14
5	Average weekly total earnings, category of employee, sector .....	16
6	Average weekly total earnings, category of employee, States & Territories ..	17

### FULL-TIME ADULT EMPLOYEES

7	Weekly total earnings, distribution, occupation .....	18
8	Average weekly earnings, composition, occupation .....	21
9	Average weekly earnings, composition, industry .....	22
10	Average weekly earnings, composition, sector .....	24
11	Average weekly earnings, composition, States & Territories .....	25

### NON-MANAGERIAL EMPLOYEES

12	Average weekly total earnings and hours, occupation, employee type .....	26
13	Average weekly hours paid for, category of employee .....	27

### FULL-TIME ADULT NON-MANAGERIAL EMPLOYEES

14	Weekly total earnings, distribution, industry .....	28
15	Weekly total earnings, distribution, States & Territories .....	31
16	Average weekly earnings and hours, composition, occupation .....	34
17	Average weekly earnings and hours, composition, industry .....	35
18	Average weekly earnings and hours, composition, sector .....	37
19	Average weekly earnings and hours, composition, States & Territories .....	38
20	Average weekly earnings and hours, occupation .....	39
21	Overtime, sector, occupation .....	45
22	Overtime, sector, industry .....	46
23	Overtime, sector, States & Territories .....	48

### PRIVATE SECTOR FULL-TIME ADULT NON-MANAGERIAL EMPLOYEES

24	Earnings and hours, composition, occupation .....	49
25	Earnings and hours, composition, industry .....	50
26	Earnings and hours, composition, States & Territories .....	52
27	Earnings and hours, employer unit size .....	53

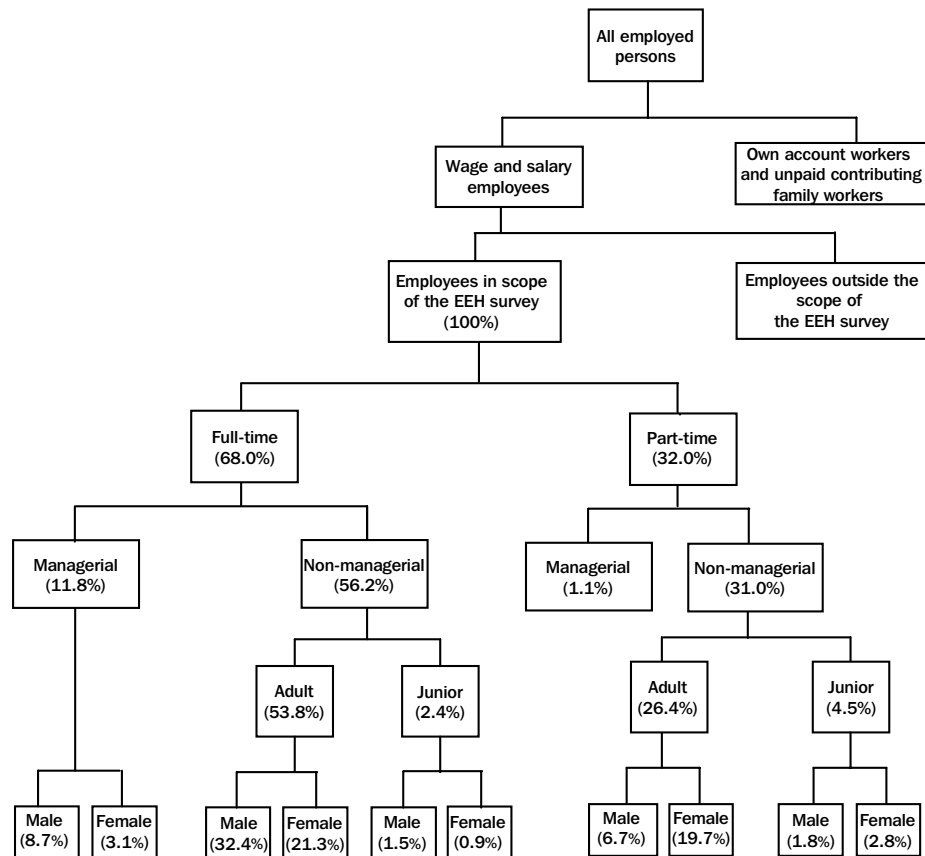
## SUMMARY OF FINDINGS

### OVERVIEW

The biennial Survey of Employee Earnings and Hours (EEH) collects data on the distribution and composition of the wage and salary earnings of employees in Australia. Estimates contained in this publication include distribution of earnings, and composition of earnings and paid hours by occupation, industry, and States and Territories. Composition data are also published by sector. Detailed information on concepts, methods and data items used for this survey can be found in the Explanatory notes.

As shown in the diagram below, just over two-thirds of the in scope wage and salary earners in Australia were full-time employees, and slightly more than half were full-time non-managerial adults. The ratio of females to males was highest for the part-time non-managerial adult and part-time junior categories.

Proportion of employees in  
scope of EEH survey by  
category of employee



### DISTRIBUTION OF EARNINGS

ALL EMPLOYEES  
(tables 1–6)

- Average weekly total earnings for all employees was \$610.20 in May 1998, a rise of 6.4% since May 1996.
- Median weekly total earnings for all employees was \$558.00, a rise of 5.5% since May 1996.
- Median weekly total earnings for all males was \$665.70, a rise of 5.7% since May 1996; for females the median was \$465.10, a rise of 7.1%.
- The gap between the lowest and highest decile for weekly total earnings was greater for males (\$1,014.70) than for females (\$755.10). This reflects an increase in the gap of 13.1% for males and 9.8% for females since May 1996.
- The occupation group with the lowest average weekly total earnings was Elementary clerical, sales and service workers (\$327.30), while Managers and administrators recorded the highest (\$1,205.30).

## SUMMARY OF FINDINGS *continued*

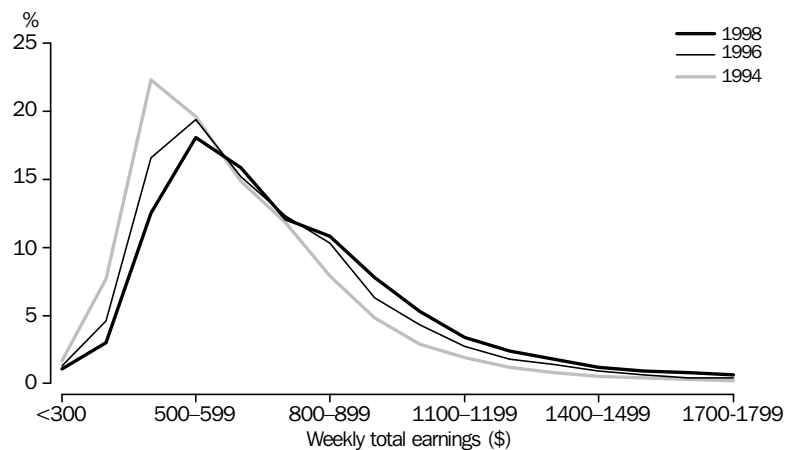
### ALL EMPLOYEES *continued*

- Average weekly total earnings for private sector employees was \$578.00, an increase of 7.7% since May 1996. In the public sector average weekly total earnings increased by 6.7% to \$725.00.
- Three States and Territories had average weekly total earnings for all employees which were higher than that recorded for Australia. These were the Australian Capital Territory (\$734.00), the Northern Territory (\$643.10) and New South Wales (\$642.00).

### FULL-TIME EMPLOYEES (tables 2–6)

- Average weekly total earnings for full-time employees was \$766.20 in May 1998, a rise of 8.6% since May 1996.
- In the two years from May 1996 to May 1998 the percentage increase in average weekly total earnings for full-time employees was greatest for Tradespersons and related workers and Associate professionals (both 9.9%) and smallest for Elementary clerical, sales and service workers (4.6%).
- The largest percentage increase in average weekly total earnings for males was in the Associate professionals category (10.5%) and the smallest was for Elementary clerical, sales and service workers (2.1%).
- Average weekly total earnings for females also increased most in the Associate professionals category (11.1%) and least for Elementary clerical, sales and service workers (6.6%).
- The ratio of average weekly total earnings for full-time females to that of males was 80.8%.

Distribution of full-time adult employees by weekly total earnings



### FULL-TIME ADULT EMPLOYEES (tables 7–11)

- Average weekly total earnings for full-time adult employees was \$782.20 in May 1998, an increase of 8.1% since May 1996.
- In the two years from May 1996 to May 1998 the strongest growth in average weekly total earnings for full-time adult employees was reported in Queensland (\$72.50 or 10.6%) and the smallest rise was in the Northern Territory (\$29.50 or 3.9%).
- Occupation groups with the highest average weekly total earnings for full-time adult employees were Managers and administrators (\$1,236.00), Professionals (\$939.60) and Associate professionals (\$808.40).
- Occupation groups with the lowest average weekly total earnings for full-time adult employees were Elementary clerical, sales and service workers (\$573.20), Labourers and related workers (\$603.30) and Intermediate clerical, sales and service workers (\$624.90).
- The ratio of female to male average weekly total earnings for full-time adult employees was 80.6%. It was highest for the Professionals occupation group (85.0%) and lowest for Tradespersons and related workers (72.3%).

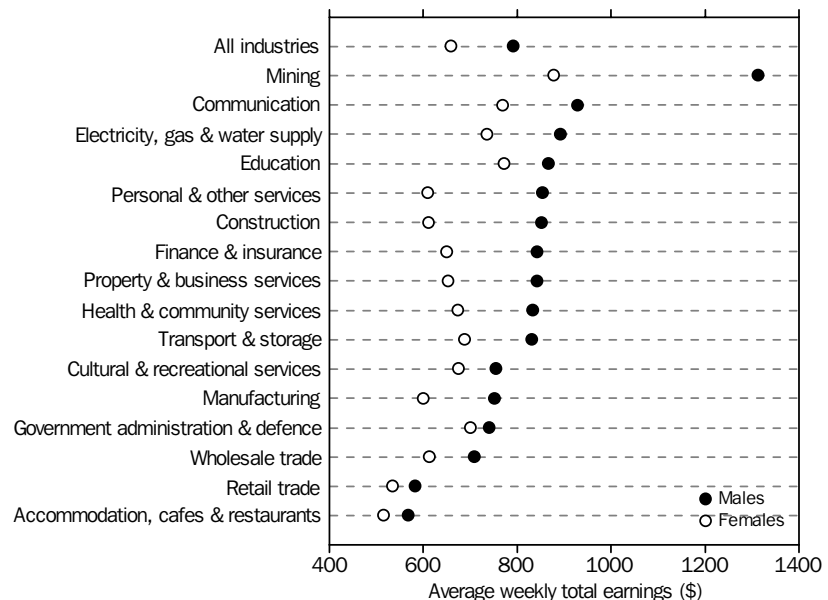
## SUMMARY OF FINDINGS *continued*

Average weekly total earnings,  
full-time adult employees  
by occupation group



- FULL-TIME ADULT NON-MANAGERIAL EMPLOYEES**  
(tables 14–27)
- Median weekly total earnings for full-time adult non-managerial employees was \$724.20.
  - Half of all full-time adult non-managerial employees recorded weekly total earnings between \$538.90 and \$873.90. One-tenth received \$458.70 or less while one-tenth received more than \$1,081.80.
  - For male full-time adult non-managerial employees the median weekly total earnings was \$724.20 and for females it was \$613.90.
  - Males and females in the Mining industry continued to have the highest average weekly total earnings receiving \$1,313.10 and \$878.00 respectively.
  - The ratio of female to male average weekly total earnings for full-time adult non-managerial employees was 83.2%. The ratio was highest in the Government administration and defence industry (94.6%) and lowest in Mining (66.9%).

Average weekly total earnings,  
full-time adult  
non-managerial employees by  
industry



- PART-TIME EMPLOYEES**  
(tables 2–6)
- Average weekly total earnings for part-time employees was \$279.20, with earnings for males in this group lower than for females (\$262.00 compared to \$285.60).
  - Part-time employees earned most in the Electricity, gas and water supply industry where the average weekly total earnings was \$458.20, and least in the Cultural and recreational services industry (\$187.70).

## SUMMARY OF FINDINGS *continued*

### COMPOSITION OF EARNINGS

ORDINARY TIME  
(tables 2, 8–11 and 16–27)

- Average weekly ordinary time earnings for all employees was \$582.10 in May 1998, an increase of 6.9% since May 1996.
- Base pay made up 98.5% of ordinary time earnings (and 94.0% of total earnings) for all employees, and 98.2% of ordinary time earnings and (91.9%) of total earnings) for full-time adult non-managerial employees.
- Females had a higher proportion of base pay contributing to average weekly total earnings for all occupation groups.

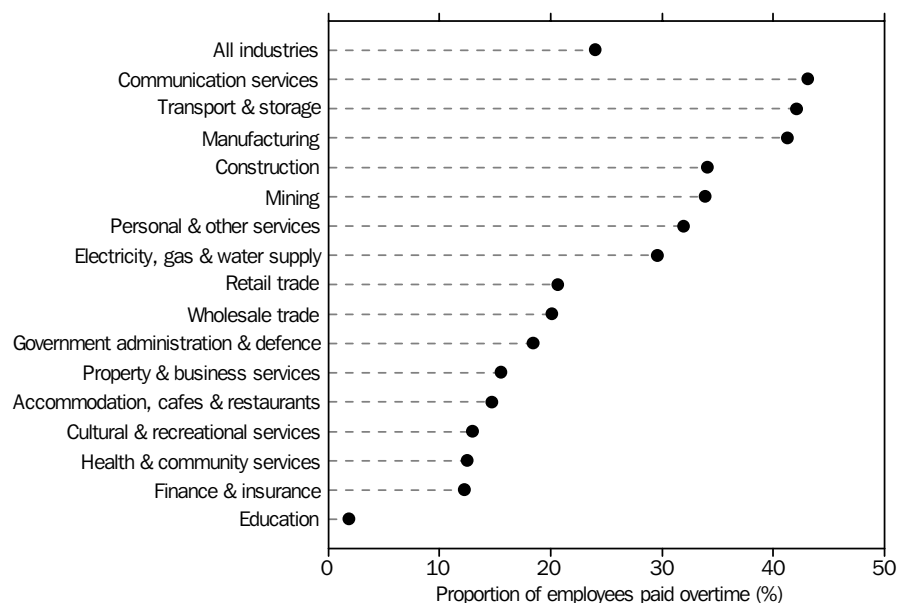
Base pay as a proportion of  
average weekly total earnings,  
full-time adult  
non-managerial employees by  
occupation



OVERTIME  
(tables 8–11, 16–19 and  
21–26)

- Average weekly overtime earnings for full-time adult non-managerial employees receiving overtime was \$199.40 in May 1998, a rise of 5.3% since May 1996. However, the average overtime hours paid for dropped slightly to 7.5 hours compared to 7.7 hours in May 1996.
- Average weekly overtime earnings for male full-time adult non-managerial employees paid overtime was higher than that for females (\$222.10 compared to \$115.30).
- Males continued to work more paid overtime hours than females (8.2 hours compared to 4.7 hours).
- The proportion of full-time adult non-managerial employees paid overtime was 24.0%. It was highest in the Communication services, Transport and storage and Manufacturing industries (43.1%, 42.1% and 41.3% respectively).

Percentage of full-time adult  
non-managerial employees  
paid overtime by industry

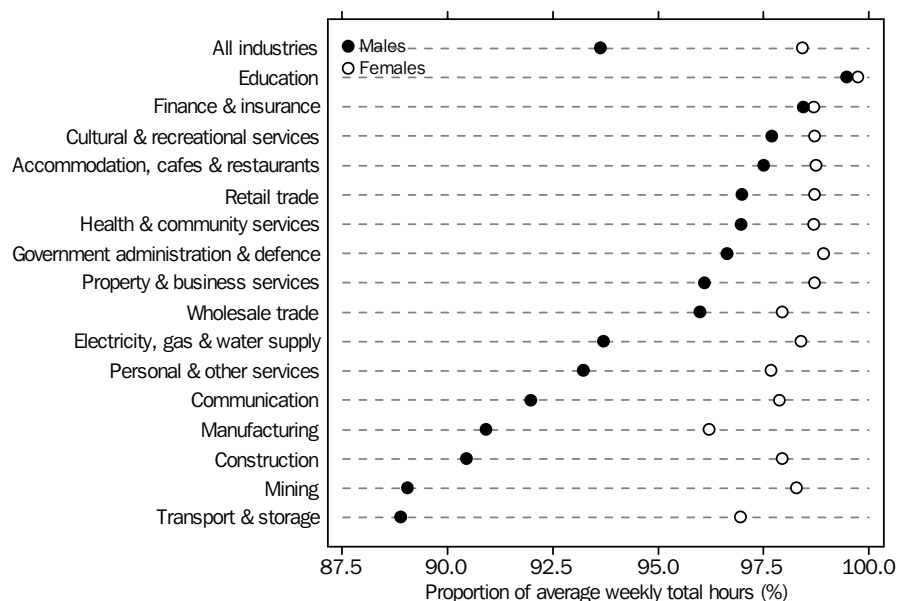


## SUMMARY OF FINDINGS *continued*

### COMPOSITION OF HOURS (tables 12–13 and 16–27)

- Full-time adult non-managerial employees had average weekly total hours paid for of 39.8 hours, the same as in May 1996. The ordinary time hourly component rose slightly to 38.0 hours (37.9 hours in May 1996), while the paid overtime hours component dropped slightly to 1.8 hours (2.0 hours in May 1996).
- Of the occupation groups, Intermediate production and transport workers had the highest average weekly total hours paid for (43.1), comprising 38.4 ordinary time hours and 4.8 overtime hours.
- Advanced clerical, sales and service workers had the lowest recorded average weekly ordinary time hours paid for (37.5) of all the major occupation groups for full-time adult non-managerial employees. Professionals had the lowest average weekly total hours (38.0) and the lowest average weekly overtime hours paid for (0.3).

Average weekly ordinary time  
hours as a proportion of  
average weekly total hours,  
full-time adult  
non-managerial employees by  
industry



- For full-time adult non-managerial employees the Education industry had the lowest recorded average weekly total hours paid for (36.7) and the lowest average weekly ordinary time hours paid for (36.6).
- The Mining industry had the highest average weekly total hours paid for, with full-time adult non-managerial employees recording 45.0 hours. This comprised 40.6 ordinary time hours and 4.4 overtime hours.
- Average weekly ordinary time hours as a proportion of average weekly total hours for full-time adult non-managerial males was lowest in the Transport and storage and Mining industries (88.9% and 89.0% respectively).



## WEEKLY TOTAL EARNINGS, Distribution of All Employees—Occupation

		Managers and admini- strators(a)	Professionals	Associate professionals	Trades- persons and related workers	Advanced clerical and service workers	Intermediate clerical, sales and service workers	Intermediate production and transport workers	Elementary clerical, sales and service workers	Labourers and related workers	All occupations
MALES											
Weekly total earnings (\$)		%	%	%	%	%	%	%	%	%	%
Under 200		* 0.9	4.8	3.9	3.5	* 4.6	9.4	7.2	31.9	20.0	8.9
200 and under 300		* 0.3	1.8	2.1	5.7	* 4.0	3.8	4.1	9.2	8.2	4.3
300 and under 400		* 2.0	2.8	4.5	6.5	* 1.0	6.0	6.1	9.0	8.4	5.6
400 and under 500		3.0	3.2	4.9	10.5	* 5.0	11.0	12.7	13.9	17.6	9.5
500 and under 600		3.5	5.8	9.2	17.7	17.0	19.8	17.6	12.3	16.8	13.4
600 and under 700		5.6	7.4	13.2	15.3	21.0	18.7	13.4	12.4	10.2	12.4
700 and under 800		5.9	9.7	14.4	11.4	13.6	12.3	10.1	5.0	7.4	10.1
800 and under 900		6.9	16.3	11.8	8.3	14.7	8.3	8.2	2.6	3.9	8.9
900 and under 1 000		8.2	13.8	10.0	6.6	8.2	4.4	5.2	1.7	2.5	7.0
1 000 and under 1 100		10.7	9.8	7.6	4.6	5.1	2.6	4.5	0.7	1.4	5.3
1 100 and under 1 200		9.4	5.8	5.4	3.0	* 1.9	* 1.4	2.8	* 0.5	1.0	3.6
1 200 and under 1 300		6.3	5.3	3.7	1.8	* 1.4	0.5	2.2	* 0.4	0.5	2.6
1 300 and under 1 400		6.4	3.5	2.4	1.5	* 0.8	* 0.5	1.5	* 0.2	* 0.6	2.0
1 400 and under 1 500		5.3	2.1	1.4	0.9	* 0.2	* 0.7	1.2	* 0.1	* 0.3	1.4
1 500 and under 1 600		4.6	1.8	1.2	0.7	—	* 0.2	0.8	* 0.1	* 0.1	1.1
1 600 and under 1 700		3.4	1.5	* 1.0	0.6	* 0.4	* 0.1	0.6	—	* 0.3	0.9
1 700 and under 1 800		* 3.6	0.8	0.7	0.5	* 0.1	—	0.7	—	* 0.2	0.7
1 800 and under 1 900		2.4	0.7	* 0.4	0.2	* 0.2	—	0.5	—	* 0.2	0.5
1 900 and under 2 000		1.7	0.4	* 0.5	* 0.2	—	—	* 0.3	—	—	0.3
2 000 and over		9.8	2.9	1.6	0.5	* 1.0	* 0.2	0.4	—	* 0.1	1.6
<b>Total</b>		<b>100.0</b>	<b>100.0</b>	<b>100.0</b>	<b>100.0</b>	<b>100.0</b>	<b>100.0</b>	<b>100.0</b>	<b>100.0</b>	<b>100.0</b>	<b>100.0</b>
MALES											
		\$	\$	\$	\$	\$	\$	\$	\$	\$	\$
10th percentile		601.10	422.20	385.60	307.10	401.70	211.80	274.20	68.30	86.40	224.50
20th percentile		770.30	624.60	539.20	439.90	512.50	404.70	424.80	119.10	199.80	406.40
<b>25th percentile</b>		<b>864.20</b>	<b>689.10</b>	<b>600.80</b>	<b>483.40</b>	<b>552.20</b>	<b>460.70</b>	<b>464.80</b>	<b>149.80</b>	<b>251.40</b>	<b>466.50</b>
30th percentile		924.20	746.10	647.40	517.20	586.80	498.10	499.70	180.70	325.50	507.30
40th percentile		1 026.50	831.70	711.90	578.60	634.50	551.40	551.40	285.20	412.60	584.60
<b>50th percentile (median)</b>		<b>1 134.10</b>	<b>893.30</b>	<b>783.20</b>	<b>637.10</b>	<b>683.70</b>	<b>599.80</b>	<b>615.60</b>	<b>396.90</b>	<b>481.20</b>	<b>665.70</b>
60th percentile		1 258.70	953.60	863.80	703.10	748.70	649.40	693.30	481.70	531.10	754.60
70th percentile		1 418.40	1 028.30	963.20	792.40	820.50	710.10	789.80	545.00	588.20	865.40
<b>75th percentile</b>		<b>1 506.40</b>	<b>1 094.80</b>	<b>1 002.70</b>	<b>849.80</b>	<b>851.70</b>	<b>743.00</b>	<b>841.60</b>	<b>587.80</b>	<b>629.30</b>	<b>923.70</b>
80th percentile		1 627.60	1 174.20	1 072.30	915.90	891.10	787.00	907.60	621.20	679.90	998.50
90th percentile		1 988.10	1 405.30	1 278.90	1 099.20	1 003.50	910.50	1 130.20	720.30	823.70	1 239.20
<b>Average earnings</b>		<b>1 260.60</b>	<b>928.40</b>	<b>833.20</b>	<b>688.00</b>	<b>715.10</b>	<b>599.90</b>	<b>675.30</b>	<b>395.30</b>	<b>480.90</b>	<b>729.80</b>

(a) See paragraph 8 of the Explanatory notes.

WEEKLY TOTAL EARNINGS, Distribution of All Employees—Occupation *continued*

		Managers and admini- strators(a)	Professionals	Associate professionals	Trades- persons and related workers	Advanced clerical and service workers	Intermediate clerical, sales and service workers	Intermediate production and transport workers	Elementary clerical, sales and service workers	Labourers and related workers	All occupations
FEMALES											
Weekly total earnings (\$)		%	%	%	%	%	%	%	%	%	%
Under 200		* 0.9	9.5	8.4	18.1	9.9	15.9	23.3	38.9	36.5	18.6
200 and under 300		* 3.8	4.4	5.7	18.4	9.7	12.4	9.7	15.9	12.2	10.3
300 and under 400		* 4.4	6.9	7.9	10.5	11.3	13.7	12.3	15.2	13.2	11.4
400 and under 500		* 3.3	6.6	13.7	19.5	12.3	18.1	24.4	17.7	19.2	14.8
500 and under 600		* 5.5	8.8	17.7	20.5	20.7	20.4	12.8	6.3	10.6	14.3
600 and under 700		8.6	12.5	15.5	7.3	16.3	11.3	7.2	3.3	4.3	10.2
700 and under 800		12.3	11.9	12.1	* 2.3	11.2	5.1	4.0	1.6	2.2	6.9
800 and under 900		5.8	18.1	7.6	* 1.3	4.6	1.7	* 2.0	0.6	* 1.0	5.7
900 and under 1 000		9.3	10.7	5.2	* 1.3	2.1	0.9	* 2.3	* 0.3	* 0.4	3.5
1 000 and under 1 100		12.5	4.5	2.7	* 0.6	0.7	0.3	* 0.9	* 0.1	* 0.3	1.7
1 100 and under 1 200		7.2	2.5	0.9	—	* 1.0	* 0.1	* 0.2	—	—	0.9
1 200 and under 1 300		5.7	1.2	* 0.8	—	* 0.1	—	* 0.6	—	* 0.1	0.5
1 300 and under 1 400		4.7	0.7	* 0.8	—	* 0.1	—	—	—	—	0.3
1 400 and under 1 500		* 3.4	0.4	* 0.3	—	—	—	* 0.2	—	—	0.2
1 500 and under 1 600		* 2.2	* 0.3	—	—	—	—	* 0.1	—	—	0.1
1 600 and under 1 700		* 1.3	* 0.3	* 0.4	—	—	—	—	—	—	0.1
1 700 and under 1 800		* 0.8	* 0.1	—	—	—	—	—	—	—	0.1
1 800 and under 1 900		* 1.3	* 0.1	* 0.2	—	—	—	—	—	—	* 0.1
1 900 and under 2 000		* 0.4	* 0.1	—	—	—	—	—	—	—	—
2 000 and over		* 6.6	* 0.4	* 0.1	—	—	—	—	—	—	* 0.3
<b>Total</b>		<b>100.0</b>	<b>100.0</b>	<b>100.0</b>	<b>100.0</b>	<b>100.0</b>	<b>100.0</b>	<b>100.0</b>	<b>100.0</b>	<b>100.0</b>	<b>100.0</b>
FEMALES											
		\$	\$	\$	\$	\$	\$	\$	\$	\$	\$
10th percentile		431.10	208.90	227.60	122.00	200.10	138.30	83.30	60.20	65.40	110.30
20th percentile		616.80	385.00	385.00	212.80	301.10	233.60	175.70	100.20	110.10	212.70
<b>25th percentile</b>		<b>675.10</b>	<b>462.40</b>	<b>409.70</b>	<b>232.30</b>	<b>358.00</b>	<b>271.70</b>	<b>220.80</b>	<b>119.30</b>	<b>139.30</b>	<b>263.00</b>
30th percentile		705.60	527.80	452.90	264.50	385.90	309.30	268.30	148.50	167.00	308.20
40th percentile		822.10	627.90	521.20	324.30	471.00	385.60	372.40	207.40	232.70	396.90
<b>50th percentile (median)</b>		<b>973.10</b>	<b>710.00</b>	<b>577.30</b>	<b>410.00</b>	<b>533.20</b>	<b>447.00</b>	<b>418.30</b>	<b>271.40</b>	<b>309.90</b>	<b>465.10</b>
60th percentile		1 043.50	793.70	633.40	456.90	581.40	499.40	450.70	330.80	385.30	529.70
70th percentile		1 147.00	864.70	706.30	503.40	631.40	541.00	500.40	400.00	440.80	603.90
<b>75th percentile</b>		<b>1 227.40</b>	<b>889.40</b>	<b>746.80</b>	<b>539.40</b>	<b>660.70</b>	<b>567.30</b>	<b>531.60</b>	<b>426.30</b>	<b>469.10</b>	<b>649.30</b>
80th percentile		1 314.10	908.70	791.00	552.30	698.50	597.50	576.00	458.70	492.30	703.20
90th percentile		1 623.40	1 012.40	917.50	630.10	784.40	680.60	706.50	530.50	574.20	865.40
<b>Average earnings</b>		<b>1 015.70</b>	<b>680.60</b>	<b>587.70</b>	<b>395.20</b>	<b>510.80</b>	<b>429.30</b>	<b>409.20</b>	<b>289.90</b>	<b>319.90</b>	<b>484.00</b>

(a) See paragraph 8 of the Explanatory notes.

WEEKLY TOTAL EARNINGS, Distribution of All Employees—Occupation *continued*

		Managers and admini- strators(a)	Professionals	Associate professionals	Trades- persons and related workers	Advanced clerical and service workers	Intermediate clerical, sales and service workers	Intermediate production and transport workers	Elementary clerical, sales and service workers	Labourers and related workers	All occupations
PERSONS											
Weekly total earnings (\$)		%	%	%	%	%	%	%	%	%	%
Under 200		* 0.9	7.5	5.8	5.0	9.2	14.2	9.9	36.4	26.6	13.6
200 and under 300		* 1.1	3.2	3.6	7.0	8.9	10.1	5.0	13.5	9.8	7.2
300 and under 400		* 2.6	5.1	5.9	6.9	10.0	11.6	7.1	13.0	10.4	8.4
400 and under 500		3.1	5.1	8.5	11.4	11.3	16.2	14.7	16.3	18.3	12.1
500 and under 600		3.9	7.5	12.7	18.0	20.2	20.3	16.8	8.4	14.3	13.8
600 and under 700		6.2	10.3	14.2	14.5	16.9	13.3	12.3	6.5	7.8	11.3
700 and under 800		7.4	10.9	13.4	10.5	11.5	7.0	9.1	2.8	5.3	8.5
800 and under 900		6.6	17.3	10.1	7.6	5.9	3.5	7.1	1.3	2.7	7.4
900 and under 1 000		8.4	12.0	8.0	6.1	2.9	1.8	4.7	0.8	1.7	5.3
1 000 and under 1 100		11.1	6.8	5.6	4.2	1.3	0.9	3.9	0.3	1.0	3.6
1 100 and under 1 200		8.9	3.9	3.6	2.7	* 1.1	* 0.5	2.4	* 0.2	0.6	2.3
1 200 and under 1 300		6.2	3.0	2.5	1.6	* 0.3	0.2	1.9	* 0.2	0.3	1.6
1 300 and under 1 400		6.1	1.9	1.7	1.3	* 0.2	0.2	1.2	* 0.1	* 0.4	1.2
1 400 and under 1 500		4.9	1.1	0.9	0.8	* 0.1	* 0.2	1.0	—	* 0.2	0.8
1 500 and under 1 600		4.0	1.0	0.7	0.6	—	* 0.1	0.7	—	* 0.1	0.6
1 600 and under 1 700		2.9	0.8	* 0.7	0.5	* 0.1	—	0.5	—	* 0.2	0.5
1 700 and under 1 800		* 3.0	0.4	0.4	0.5	—	—	0.6	—	* 0.1	0.4
1 800 and under 1 900		2.1	0.4	0.3	0.2	—	—	0.4	—	* 0.1	0.3
1 900 and under 2 000		1.4	0.2	* 0.3	* 0.2	—	—	* 0.3	—	—	0.2
2 000 and over		9.1	1.5	1.0	0.4	* 0.1	* 0.1	0.3	—	* 0.1	1.0
<b>Total</b>		<b>100.0</b>	<b>100.0</b>	<b>100.0</b>	<b>100.0</b>	<b>100.0</b>	<b>100.0</b>	<b>100.0</b>	<b>100.0</b>	<b>100.0</b>	<b>100.0</b>
PERSONS											
		\$	\$	\$	\$	\$	\$	\$	\$	\$	\$
10th percentile		549.60	282.00	301.40	271.20	202.40	150.40	203.50	62.10	76.20	149.70
20th percentile		721.40	480.20	451.70	401.90	316.10	258.00	375.50	104.20	149.70	288.30
<b>25th percentile</b>		<b>793.90</b>	<b>555.20</b>	<b>501.70</b>	<b>450.40</b>	<b>374.80</b>	<b>302.70</b>	<b>422.20</b>	<b>130.00</b>	<b>187.10</b>	<b>351.50</b>
30th percentile		867.80	614.00	542.00	496.70	401.80	350.20	456.60	158.30	235.70	401.60
40th percentile		995.00	712.10	614.60	550.70	500.50	429.00	516.30	228.10	344.70	487.90
<b>50th percentile (median)</b>		<b>1 083.70</b>	<b>802.80</b>	<b>693.30</b>	<b>609.10</b>	<b>549.40</b>	<b>487.70</b>	<b>575.10</b>	<b>300.40</b>	<b>413.80</b>	<b>558.00</b>
60th percentile		1 196.70	867.10	769.30	677.50	601.30	534.80	650.20	374.20	475.50	638.30
70th percentile		1 356.20	920.20	851.80	766.50	655.80	586.00	740.80	447.40	530.30	734.60
<b>75th percentile</b>		<b>1 444.70</b>	<b>957.50</b>	<b>910.90</b>	<b>817.60</b>	<b>688.10</b>	<b>616.30</b>	<b>799.40</b>	<b>475.40</b>	<b>560.70</b>	<b>799.40</b>
80th percentile		1 568.10	1 009.80	972.10	885.30	726.70	651.60	867.00	502.00	602.80	867.10
90th percentile		1 936.50	1 208.20	1 156.50	1 071.80	827.00	755.20	1 081.50	629.30	741.90	1 058.70
<b>Average earnings</b>		<b>1 205.30</b>	<b>789.60</b>	<b>731.90</b>	<b>658.60</b>	<b>537.70</b>	<b>475.20</b>	<b>630.30</b>	<b>327.30</b>	<b>416.20</b>	<b>610.20</b>

(a) See paragraph 8 of the Explanatory notes.

## AVERAGE WEEKLY EARNINGS, Composition

	FULL-TIME EMPLOYEES.....						PART-TIME EMPLOYEES	ALL EMPLOYEES
	<i>Managerial adult</i>	<i>Non- managerial adult</i>	<i>Non- managerial junior</i>	<i>Total non- managerial</i>	<i>Total adult</i>	<i>Total</i>	<i>Total</i>	<i>Total</i>
	\$	\$	\$	\$	\$	\$	\$	\$
MALES								
Ordinary time								
Base pay	1 018.60	705.50	311.30	687.80	771.50	755.00	251.00	669.60
Payment by measured result	10.30	10.80	* 1.90	10.40	10.70	10.40	* 2.00	9.00
Overaward and overagreement pay	* 2.90	6.40	* 2.00	6.20	5.70	5.60	* 0 .60	4.70
<i>Total ordinary time</i>	<i>1 031.90</i>	<i>722.80</i>	<i>315.20</i>	<i>704.50</i>	<i>787.90</i>	<i>771.00</i>	<i>253.70</i>	<i>683.40</i>
Overtime	3.00	69.40	22.20	67.30	55.40	54.20	8.30	46.50
<b>Total</b>	<b>1 034.80</b>	<b>792.20</b>	<b>337.40</b>	<b>771.80</b>	<b>843.30</b>	<b>825.20</b>	<b>262.00</b>	<b>729.80</b>
FEMALES								
Ordinary time								
Base pay	812.50	639.30	322.10	626.20	661.20	648.80	280.00	472.00
Payment by measured result	* 5.60	2.10	* 0.40	2.00	2.50	2.50	* 0.50	1.50
Overaward and overagreement pay	* 1.70	2.80	* 2.30	2.80	2.70	2.70	0.60	1.70
<i>Total ordinary time</i>	<i>819.80</i>	<i>644.20</i>	<i>324.80</i>	<i>631.00</i>	<i>666.40</i>	<i>654.00</i>	<i>281.10</i>	<i>475.20</i>
Overtime	* 0.70	14.80	7.40	14.50	13.00	12.80	4.50	8.80
<b>Total</b>	<b>820.50</b>	<b>659.00</b>	<b>332.20</b>	<b>645.50</b>	<b>679.40</b>	<b>666.80</b>	<b>285.60</b>	<b>484.00</b>
PERSONS								
Ordinary time								
Base pay	964.50	679.20	315.40	663.40	730.40	715.40	272.20	573.40
Payment by measured result	9.10	7.40	* 1.40	7.10	7.70	7.50	* 0 .90	5.40
Overaward and overagreement pay	* 2.60	5.00	2.10	4.90	4.60	4.50	0.60	3.20
<i>Total ordinary time</i>	<i>976.20</i>	<i>691.60</i>	<i>318.90</i>	<i>675.40</i>	<i>742.60</i>	<i>727.40</i>	<i>273.70</i>	<i>582.10</i>
Overtime	2.40	47.80	16.60	46.40	39.60	38.80	5.50	28.10
<b>Total</b>	<b>978.50</b>	<b>739.40</b>	<b>335.50</b>	<b>721.80</b>	<b>782.20</b>	<b>766.20</b>	<b>279.20</b>	<b>610.20</b>

## AVERAGE WEEKLY TOTAL EARNINGS, Occupation

FULL-TIME EMPLOYEES..... PART-TIME EMPLOYEES ALL EMPLOYEES

	Managerial adult	Non-managerial adult	Non-managerial junior	Total non-managerial	Total adult	Total	Total	Total
	\$	\$	\$	\$	\$	\$	\$	\$

## MALES

Managers and administrators(a)	1 283.60	1 113.30	..	1 113.30	1 276.80	1 276.80	409.60	1 260.60
Professionals	1 086.20	994.10	404.40	992.30	1 010.00	1 008.50	437.80	928.40
Associate professionals	816.10	919.70	337.70	913.70	876.60	873.10	328.50	833.20
Tradespersons and related workers	546.30	773.30	340.30	723.80	756.70	712.20	293.90	688.00
Advanced clerical and service workers	882.00	744.80	361.90	743.10	769.50	768.00	248.10	715.10
Intermediate clerical, sales and service workers	766.60	694.20	302.40	684.30	698.20	688.70	262.00	599.90
Intermediate production and transport workers	550.70	771.20	364.40	761.10	764.30	754.70	255.80	675.30
Elementary clerical, sales and service workers	530.30	625.30	336.10	607.60	623.30	606.10	199.60	395.30
Labourers and related workers	621.90	630.40	313.60	618.40	630.40	618.40	204.50	480.90
<b>All occupations</b>	<b>1 034.80</b>	<b>792.20</b>	<b>337.40</b>	<b>771.80</b>	<b>843.30</b>	<b>825.20</b>	<b>262.00</b>	<b>729.80</b>

## FEMALES

Managers and administrators(a)	1 079.50	1 148.90	..	1 148.90	1 082.40	1 082.40	453.00	1 015.70
Professionals	967.10	850.70	514.20	850.40	859.00	858.80	425.80	680.60
Associate professionals	653.40	700.70	390.90	699.30	683.10	681.90	350.50	587.70
Tradespersons and related workers	530.60	547.90	282.90	494.50	547.00	496.10	265.90	395.20
Advanced clerical and service workers	480.40	641.50	340.70	630.70	627.70	618.30	289.90	510.80
Intermediate clerical, sales and service workers	623.20	581.10	336.30	568.10	582.10	569.40	280.50	429.30
Intermediate production and transport workers	* 366.70	573.50	341.00	566.50	573.20	566.20	227.90	409.20
Elementary clerical, sales and service workers	330.80	526.50	333.40	504.00	522.80	501.20	207.70	289.90
Labourers and related workers	378.50	526.90	367.20	521.80	526.00	520.90	213.90	319.90
<b>All occupations</b>	<b>820.50</b>	<b>659.00</b>	<b>332.20</b>	<b>645.50</b>	<b>679.40</b>	<b>666.80</b>	<b>285.60</b>	<b>484.00</b>

## PERSONS

Managers and administrators(a)	1 240.80	1 121.10	..	1 121.10	1 236.00	1 236.00	436.60	1 205.30
Professionals	1 054.50	923.10	423.90	922.10	939.60	938.80	428.40	789.60
Associate professionals	762.80	838.90	348.50	834.90	808.40	805.90	344.60	731.90
Tradespersons and related workers	545.60	760.20	334.10	709.10	744.80	698.70	281.10	658.60
Advanced clerical and service workers	602.90	657.70	341.10	648.00	652.20	643.50	288.00	537.70
Intermediate clerical, sales and service workers	705.40	621.90	329.20	609.30	624.90	612.60	278.00	475.20
Intermediate production and transport workers	549.50	748.00	361.10	738.20	742.50	733.00	245.40	630.30
Elementary clerical, sales and service workers	436.00	576.00	334.30	554.30	573.20	552.20	205.40	327.30
Labourers and related workers	555.80	603.60	325.90	593.50	603.30	593.30	209.80	416.20
<b>All occupations</b>	<b>978.50</b>	<b>739.40</b>	<b>335.50</b>	<b>721.80</b>	<b>782.20</b>	<b>766.20</b>	<b>279.20</b>	<b>610.20</b>

(a) See paragraph 8 of the Explanatory notes.

## AVERAGE WEEKLY TOTAL EARNINGS, Industry

FULL-TIME EMPLOYEES..... PART-TIME EMPLOYEES ALL EMPLOYEES

	Managerial adult	Non-managerial adult	Non-managerial junior	Total non-managerial	Total adult	Total	Total	Total
	\$	\$	\$	\$	\$	\$	\$	\$

## MALES

Mining	1 940.70	1 313.10	576.20	1 297.90	1 367.70	1 352.80	435.00	1 338.80
Manufacturing	1 068.50	751.50	337.50	734.60	793.80	777.50	273.30	749.80
Electricity, gas and water supply	1 420.60	891.40	445.10	885.30	952.00	945.80	506.40	941.40
Construction	866.30	852.10	371.20	816.00	855.40	826.90	401.70	804.10
Wholesale trade	1 005.50	708.80	327.10	690.80	788.50	772.50	292.00	738.30
Retail trade	709.10	582.70	338.20	548.20	618.60	589.00	187.00	440.60
Accommodation, cafes and restaurants	686.50	568.90	274.60	541.50	604.50	582.50	222.40	418.30
Transport and storage	1 030.90	831.50	366.50	827.00	864.80	860.70	351.30	804.80
Communication services	1 393.00	929.40	n.a.	929.40	977.00	977.00	322.60	947.20
Finance and insurance	1 452.50	843.40	393.70	837.50	1 103.70	1 098.30	336.60	1 063.60
Property and business services	1 067.80	842.10	308.50	814.50	912.30	890.40	296.00	766.40
Government administration and defence(a)	1 246.00	741.50	321.90	739.50	818.20	816.30	346.80	785.10
Education	1 122.30	867.30	341.90	852.60	900.70	887.10	293.90	760.40
Health and community services	1 149.50	832.60	479.00	830.60	903.10	901.30	435.40	758.40
Cultural and recreational services	1 030.00	755.10	229.80	718.60	836.00	805.60	202.80	557.50
Personal and other services(b)	708.70	853.10	379.50	847.90	827.30	823.20	175.90	655.90
<b>All industries(c)</b>	<b>1 034.80</b>	<b>792.20</b>	<b>337.40</b>	<b>771.80</b>	<b>843.30</b>	<b>825.20</b>	<b>262.00</b>	<b>729.80</b>

## FEMALES

Mining	1 074.90	878.00	397.80	860.00	884.30	866.60	360.70	819.10
Manufacturing	735.20	600.70	375.20	591.70	611.30	602.50	295.10	524.70
Electricity, gas and water supply	1 252.20	736.00	349.00	731.50	756.50	752.00	440.60	713.30
Construction	515.70	611.80	298.40	594.10	592.00	578.60	302.90	472.50
Wholesale trade	652.60	613.60	297.80	601.40	620.40	610.10	265.50	501.00
Retail trade	562.70	534.80	335.60	509.90	540.50	519.40	204.10	308.70
Accommodation, cafes and restaurants	596.50	515.60	318.10	502.20	535.10	523.70	225.80	310.10
Transport and storage	716.40	687.30	325.20	683.40	691.50	688.20	360.30	621.80
Communication services	1 092.20	769.60	n.a.	769.60	788.70	788.70	341.20	667.80
Finance and insurance	1 077.30	650.30	384.20	640.50	707.90	697.50	349.10	586.70
Property and business services	1 013.70	652.40	329.60	635.20	707.70	690.50	294.20	538.60
Government administration and defence(a)	1 145.70	701.50	345.40	697.90	742.70	739.00	342.00	624.60
Education	1 011.90	772.40	313.20	770.20	790.60	788.40	312.70	577.00
Health and community services	855.10	674.20	323.40	664.40	691.40	682.10	367.70	500.30
Cultural and recreational services	874.60	675.60	258.70	650.60	707.50	684.70	176.10	391.00
Personal and other services(b)	649.60	610.40	294.60	585.80	615.90	594.10	230.10	408.60
<b>All industries(c)</b>	<b>820.50</b>	<b>659.00</b>	<b>332.20</b>	<b>645.50</b>	<b>679.40</b>	<b>666.80</b>	<b>285.60</b>	<b>484.00</b>

(a) Excludes permanent defence forces.

(c) Excludes Agriculture, forestry and fishing.

(b) Excludes private households employing staff.

AVERAGE WEEKLY TOTAL EARNINGS, Industry *continued*

FULL-TIME EMPLOYEES..... PART-TIME EMPLOYEES ALL EMPLOYEES

<i>Managerial adult</i>	<i>Non- managerial adult</i>	<i>Non- managerial junior</i>	<i>Total non- managerial</i>	<i>Total adult</i>	<i>Total</i>	<i>Total</i>	<i>Total</i>
\$	\$	\$	\$	\$	\$	\$	\$

## PERSONS

Mining	1 900.90	1 260.00	539.60	1 243.70	1 311.70	1 295.50	399.90	1 272.90
Manufacturing	1 021.20	716.90	346.10	701.70	753.80	739.10	286.80	690.70
Electricity gas and water supply	1 409.80	863.90	430.40	858.10	919.70	913.80	458.20	899.70
Construction	828.20	822.60	364.40	789.20	823.80	797.50	342.70	747.40
Wholesale trade	935.10	680.20	319.50	664.10	742.20	727.80	273.60	657.50
Retail trade	661.90	562.50	337.20	532.20	587.60	561.40	198.90	367.40
Accommodation cafes and restaurants	653.80	545.50	290.10	524.50	575.50	558.10	224.80	355.90
Transport and storage	963.80	796.70	355.80	792.30	823.80	819.80	354.80	757.70
Communication services	1 340.00	884.90	n.a.	884.90	926.30	926.30	336.40	856.30
Finance and insurance	1 365.80	729.50	386.10	720.20	910.70	900.40	347.90	788.40
Property and business services	1 053.10	750.80	318.80	728.10	824.30	803.90	294.80	653.80
Government administration and defence(a)	1 219.30	725.90	335.50	723.30	790.00	787.30	343.10	714.50
Education	1 071.00	808.90	335.80	802.30	834.60	828.30	309.20	636.40
Health and community services	995.60	714.00	333.00	705.50	750.90	742.70	375.10	549.00
Cultural and recreational services	988.40	719.80	241.50	688.60	784.40	757.00	187.70	477.00
Personal and other services(b)	691.70	767.60	311.10	751.30	755.00	741.70	209.60	543.40
<b>All industries(c)</b>	<b>978.50</b>	<b>739.40</b>	<b>335.50</b>	<b>721.80</b>	<b>782.20</b>	<b>766.20</b>	<b>279.20</b>	<b>610.20</b>

(a) Excludes permanent defence forces.

(c) Excludes Agriculture forestry and fishing.

(b) Excludes private households employing staff.

## AVERAGE WEEKLY TOTAL EARNINGS, Sector

FULL-TIME EMPLOYEES..... PART-TIME EMPLOYEES ALL EMPLOYEES

<i>Managerial adult</i>	<i>Non- managerial adult</i>	<i>Non- managerial junior</i>	<i>Total non- managerial</i>	<i>Total adult</i>	<i>Total</i>	<i>Total</i>	<i>Total</i>
\$	\$	\$	\$	\$	\$	\$	\$

## MALES

Private	1 003.00	771.80	336.70	746.60	827.20	805.30	246.50	702.00
Public	1 276.80	852.80	376.90	851.20	899.30	897.80	367.60	840.60
<b>Private and public</b>	<b>1 034.80</b>	<b>792.20</b>	<b>337.40</b>	<b>771.80</b>	<b>843.30</b>	<b>825.20</b>	<b>262.00</b>	<b>729.80</b>

## FEMALES

Private	770.80	616.20	331.70	599.90	640.10	624.90	263.80	441.00
Public	1 144.50	752.70	348.20	750.90	775.30	773.50	378.50	622.00
<b>Private and public</b>	<b>820.50</b>	<b>659.00</b>	<b>332.20</b>	<b>645.50</b>	<b>679.40</b>	<b>666.80</b>	<b>285.60</b>	<b>484.00</b>

## PERSONS

Private	942.90	713.30	334.80	691.40	761.40	741.70	258.80	578.00
Public	1 238.50	807.70	362.10	806.00	845.20	843.50	376.30	725.00
<b>Private and public</b>	<b>978.50</b>	<b>739.40</b>	<b>335.50</b>	<b>721.80</b>	<b>782.20</b>	<b>766.20</b>	<b>279.20</b>	<b>610.20</b>



## AVERAGE WEEKLY TOTAL EARNINGS, States &amp; Territories

FULL-TIME EMPLOYEES..... PART-TIME EMPLOYEES ALL EMPLOYEES

<i>Managerial adult</i>	<i>Non- managerial adult</i>	<i>Non- managerial junior</i>	<i>Total non- managerial</i>	<i>Total adult</i>	<i>Total</i>	<i>Total</i>	<i>Total</i>
\$	\$	\$	\$	\$	\$	\$	\$

## MALES

New South Wales	1 099.80	815.00	338.50	796.80	880.40	864.30	266.30	761.20
Victoria	1 001.20	775.90	341.20	755.10	825.40	807.20	268.70	717.80
Queensland	992.90	776.10	322.30	755.30	817.50	798.90	252.60	700.90
South Australia	884.70	756.20	374.80	742.50	779.80	767.80	246.00	677.10
Western Australia	1 010.20	822.30	337.70	794.10	855.10	830.00	249.40	734.90
Tasmania	866.20	723.70	307.20	699.60	749.20	728.00	286.80	664.30
Northern Territory	1 000.40	821.20	326.50	783.30	848.10	813.80	250.60	725.70
Australian Capital Territory	1 286.60	815.00	348.60	800.70	942.70	929.30	295.70	849.30
<b>Australia</b>	<b>1 034.80</b>	<b>792.20</b>	<b>337.40</b>	<b>771.80</b>	<b>843.30</b>	<b>825.20</b>	<b>262.00</b>	<b>729.80</b>

## FEMALES

New South Wales	924.10	676.60	336.30	662.30	713.20	699.60	292.50	514.70
Victoria	720.10	656.60	352.20	647.60	664.30	656.10	285.60	473.10
Queensland	726.40	647.90	322.50	632.50	657.30	643.20	288.70	471.80
South Australia	698.70	633.90	324.00	621.40	639.50	627.70	296.00	456.20
Western Australia	808.90	635.20	320.70	614.90	653.00	633.70	247.50	437.20
Tasmania	727.40	623.20	311.40	600.70	635.20	614.40	273.80	433.40
Northern Territory	810.10	669.40	351.90	666.10	681.00	677.80	289.10	540.90
Australian Capital Territory	1 036.70	716.40	291.90	713.00	767.60	764.40	343.00	604.80
<b>Australia</b>	<b>820.50</b>	<b>659.00</b>	<b>332.20</b>	<b>645.50</b>	<b>679.40</b>	<b>666.80</b>	<b>285.60</b>	<b>484.00</b>

## PERSONS

New South Wales	1 050.10	759.00	337.50	742.20	816.80	801.40	284.90	642.00
Victoria	933.50	729.00	344.30	713.40	766.60	752.50	281.20	599.50
Queensland	919.50	725.20	322.40	706.40	757.10	739.90	278.70	588.20
South Australia	845.40	708.50	353.50	695.10	728.80	716.60	283.30	567.50
Western Australia	959.00	750.00	330.70	724.50	781.00	757.50	248.00	586.30
Tasmania	832.60	688.70	308.90	664.80	711.50	689.90	276.70	553.70
Northern Territory	950.00	758.20	328.60	736.60	781.80	761.70	275.50	643.10
Australian Capital Territory	1 217.70	773.00	339.50	763.80	874.00	865.20	330.10	734.00
<b>Australia</b>	<b>978.50</b>	<b>739.40</b>	<b>335.50</b>	<b>721.80</b>	<b>782.20</b>	<b>766.20</b>	<b>279.20</b>	<b>610.20</b>

## WEEKLY TOTAL EARNINGS, Distribution of Full-time Adult Employees—Occupation

		Managers and admini- strators(a)	Professionals	Associate professionals	Trades- persons and related workers	Advanced clerical and service workers	Intermediate clerical, sales and service workers	Intermediate production and transport workers	Elementary clerical, sales and service workers	Labourers and related workers	All occupations
MALES											
Weekly total earnings (\$)		%	%	%	%	%	%	%	%	%	%
Under 200		—	* 0.3	* 0.9	* 0.4	—	* 0.2	* 0.3	* 0.3	1.2	0.4
200 and under 300		* 0.2	* 0.4	1.5	1.2	* 2.0	* 0.1	* 0.3	* 0.4	* 1.0	0.7
300 and under 400		* 1.8	* 1.3	3.2	3.5	—	* 1.4	2.7	* 4.1	6.4	2.8
400 and under 500		2.8	2.0	4.4	9.6	* 3.5	10.2	13.4	21.5	23.0	9.3
500 and under 600		3.5	4.8	9.4	19.8	18.5	24.3	20.6	24.0	24.7	15.5
600 and under 700		5.6	7.8	14.1	17.7	23.2	23.4	15.8	25.4	15.2	14.9
700 and under 800		5.9	10.1	14.9	13.3	15.0	15.9	12.1	10.6	11.1	12.1
800 and under 900		7.0	18.6	12.9	9.6	16.5	10.7	9.9	5.6	6.1	11.0
900 and under 1 000		8.3	15.7	10.9	7.7	9.1	5.6	6.2	3.8	3.9	8.6
1 000 and under 1 100		10.9	11.1	8.2	5.5	5.7	3.4	5.3	1.5	2.2	6.6
1 100 and under 1 200		9.6	6.6	5.6	3.6	* 2.1	* 1.9	3.4	* 1.0	1.6	4.4
1 200 and under 1 300		6.5	6.1	4.0	2.1	* 1.5	0.6	2.7	* 1.0	0.7	3.2
1 300 and under 1 400		6.5	3.9	2.6	1.7	* 0.9	* 0.7	1.8	* 0.3	* 1.0	2.4
1 400 and under 1 500		5.4	2.4	1.5	1.0	* 0.2	* 0.9	1.5	* 0.2	* 0.5	1.7
1 500 and under 1 600		4.6	2.1	1.3	0.8	—	* 0.3	1.0	* 0.2	* 0.2	1.4
1 600 and under 1 700		3.5	1.7	* 1.1	0.6	* 0.4	* 0.1	0.7	—	* 0.5	1.1
1 700 and under 1 800		* 3.7	0.9	0.7	0.7	* 0.1	—	0.8	—	* 0.3	0.9
1 800 and under 1 900		2.4	0.8	* 0.4	0.3	* 0.2	—	0.6	—	* 0.2	0.6
1 900 and under 2 000		1.7	0.4	* 0.5	* 0.3	—	—	* 0.4	—	—	0.4
2 000 and over		10.0	3.2	1.8	0.5	* 1.1	* 0.3	0.4	* 0.1	* 0.2	2.0
<b>Total</b>		<b>100.0</b>	<b>100.0</b>	<b>100.0</b>	<b>100.0</b>	<b>100.0</b>	<b>100.0</b>	<b>100.0</b>	<b>100.0</b>	<b>100.0</b>	<b>100.0</b>
MALES											
		\$	\$	\$	\$	\$	\$	\$	\$	\$	\$
10th percentile		633.30	615.90	499.80	451.90	510.70	483.30	459.90	433.90	401.80	468.10
20th percentile		801.00	735.30	601.20	524.20	569.20	537.40	515.00	484.00	457.60	540.20
<b>25th percentile</b>		<b>867.30</b>	<b>785.90</b>	<b>646.10</b>	<b>550.10</b>	<b>603.30</b>	<b>558.80</b>	<b>536.80</b>	<b>493.80</b>	<b>480.30</b>	<b>574.90</b>
30th percentile		943.50	817.50	673.30	578.10	622.90	579.30	562.70	507.20	492.30	603.80
40th percentile		1 042.60	876.70	738.70	627.90	671.30	613.40	615.30	550.70	530.70	673.60
<b>50th percentile (median)</b>		<b>1 140.80</b>	<b>922.20</b>	<b>809.90</b>	<b>684.80</b>	<b>711.00</b>	<b>656.70</b>	<b>679.00</b>	<b>599.20</b>	<b>568.50</b>	<b>748.70</b>
60th percentile		1 267.40	989.10	888.30	756.90	788.40	701.50	750.80	633.00	615.30	837.40
70th percentile		1 425.00	1 067.00	978.60	846.90	842.00	755.50	842.70	668.80	684.90	931.90
<b>75th percentile</b>		<b>1 525.50</b>	<b>1 134.30</b>	<b>1 021.50</b>	<b>895.80</b>	<b>884.30</b>	<b>793.00</b>	<b>898.50</b>	<b>694.40</b>	<b>726.00</b>	<b>992.20</b>
80th percentile		1 635.40	1 215.40	1 093.60	953.30	913.90	832.30	977.80	741.80	768.80	1 062.10
90th percentile		2 000.20	1 448.20	1 297.80	1 137.40	1 020.40	962.30	1 198.00	849.30	926.60	1 315.00
<b>Average earnings</b>		<b>1 276.80</b>	<b>1 010.00</b>	<b>876.60</b>	<b>756.70</b>	<b>769.50</b>	<b>698.20</b>	<b>764.30</b>	<b>623.30</b>	<b>630.40</b>	<b>843.30</b>

(a) See paragraph 8 of the Explanatory notes.

WEEKLY TOTAL EARNINGS, Distribution of Full-time Adult Employees—Occupation *continued*

		Managers and admini- strators(a)	Professionals	Associate professionals	Trades- persons and related workers	Advanced clerical and service workers	Intermediate clerical, sales and service workers	Intermediate production and transport workers	Elementary clerical, sales and service workers	Labourers and related workers	All occupations
FEMALES											
Weekly total earnings (\$)		%	%	%	%	%	%	%	%	%	%
Under 200		* 0.2	—	* 1.6	* 1.1	* 0.8	* 0.2	* 1.0	* 0.9	* 1.6	0.6
200 and under 300		* 1.9	* 0.2	* 1.7	* 2.2	* 0.9	* 0.7	* 0.2	* 0.6	* 0.6	0.8
300 and under 400		* 1.6	* 1.0	* 3.5	* 3.7	* 2.9	2.6	* 8.0	6.7	11.0	3.3
400 and under 500		* 2.4	* 1.8	10.9	30.4	13.7	22.8	36.0	50.0	38.2	17.9
500 and under 600		* 4.9	6.1	21.0	37.5	28.1	36.0	22.2	19.4	25.5	22.6
600 and under 700		8.4	14.1	19.8	* 13.9	24.3	21.6	13.1	12.0	11.8	17.5
700 and under 800		13.5	15.1	15.9	* 4.4	16.0	10.0	7.7	6.3	6.3	12.0
800 and under 900		6.4	28.0	10.1	* 2.4	7.1	3.5	* 3.9	2.4	* 2.7	10.6
900 and under 1 000		9.7	16.8	6.8	* 2.9	3.1	1.8	* 4.2	* 1.0	* 1.1	6.5
1 000 and under 1 100		13.9	7.1	3.8	* 1.4	1.1	* 0.5	* 1.7	* 0.3	* 0.8	3.2
1 100 and under 1 200		7.8	4.0	1.3	* 0.1	* 1.6	* 0.2	* 0.5	* 0.1	—	1.7
1 200 and under 1 300		6.3	2.0	* 1.0	* 0.1	* 0.2	* 0.1	* 1.1	—	* 0.3	1.0
1 300 and under 1 400		5.3	1.1	* 1.1	—	* 0.1	* 0.1	—	* 0.1	—	0.7
1 400 and under 1 500		* 3.8	0.6	* 0.4	—	* 0.1	—	* 0.4	—	—	0.4
1 500 and under 1 600		* 2.3	* 0.5	* 0.1	—	—	—	* 0.2	—	—	0.2
1 600 and under 1 700		* 1.4	* 0.5	* 0.5	—	—	—	—	—	—	0.3
1 700 and under 1 800		* 0.9	* 0.2	* 0.1	—	—	—	—	—	—	0.1
1 800 and under 1 900		* 1.5	* 0.2	* 0.2	—	—	—	—	—	—	* 0.1
1 900 and under 2 000		* 0.4	* 0.2	* 0.1	—	—	—	—	* 0.1	—	* 0.1
2 000 and over		* 7.4	* 0.7	* 0.1	—	—	—	—	* 0.1	—	* 0.5
<b>Total</b>		<b>100.0</b>	<b>100.0</b>	<b>100.0</b>	<b>100.0</b>	<b>100.0</b>	<b>100.0</b>	<b>100.0</b>	<b>100.0</b>	<b>100.0</b>	<b>100.0</b>
FEMALES											
		\$	\$	\$	\$	\$	\$	\$	\$	\$	\$
10th percentile		589.00	605.70	423.10	401.90	439.30	437.60	400.90	401.70	383.00	433.80
20th percentile		700.90	678.90	506.20	444.50	501.20	479.70	431.20	422.20	424.90	485.60
<b>25th percentile</b>		<b>740.00</b>	<b>713.40</b>	<b>535.30</b>	<b>463.90</b>	<b>523.60</b>	<b>495.10</b>	<b>441.30</b>	<b>435.30</b>	<b>435.60</b>	<b>506.60</b>
30th percentile		769.40	747.60	553.60	480.60	539.70	506.70	455.80	451.00	454.10	530.70
40th percentile		929.20	808.80	602.90	500.80	580.00	534.10	488.10	467.00	476.00	576.60
<b>50th percentile (median)</b>		<b>1 007.50</b>	<b>853.30</b>	<b>649.00</b>	<b>536.10</b>	<b>607.60</b>	<b>560.20</b>	<b>509.90</b>	<b>481.60</b>	<b>497.30</b>	<b>622.10</b>
60th percentile		1 073.60	889.10	707.20	547.40	649.70	591.00	561.20	506.20	530.80	681.20
70th percentile		1 189.50	916.60	770.60	571.80	695.50	632.80	613.80	558.60	559.80	760.80
<b>75th percentile</b>		<b>1 255.50</b>	<b>940.10</b>	<b>802.80</b>	<b>600.50</b>	<b>724.20</b>	<b>652.10</b>	<b>647.30</b>	<b>584.80</b>	<b>587.30</b>	<b>803.30</b>
80th percentile		1 355.20	969.40	840.40	628.70	749.80	677.60	696.10	615.40	625.90	853.90
90th percentile		1 724.40	1 098.50	976.00	724.60	840.40	757.90	823.20	706.40	719.10	964.20
<b>Average earnings</b>		<b>1 082.40</b>	<b>859.00</b>	<b>683.10</b>	<b>547.00</b>	<b>627.70</b>	<b>582.10</b>	<b>573.20</b>	<b>522.80</b>	<b>526.00</b>	<b>679.40</b>

(a) See paragraph 8 of the Explanatory notes.

WEEKLY TOTAL EARNINGS, Distribution of Full-time Adult Employees—Occupation *continued*

		Managers and admini- strators(a)	Professionals	Associate professionals	Trades- persons and related workers	Advanced clerical and service workers	Intermediate clerical sales and service workers	Intermediate production and transport workers	Elementary clerical, sales and service workers	Labourers and related workers	All occupations
PERSONS											
Weekly total earnings (\$)		%	%	%	%	%	%	%	%	%	%
Under 200		* 0.1	* 0.2	* 1.2	* 0.4	* 0.7	* 0.2	* 0.3	* 0.6	1.3	0.5
200 and under 300		* 0.6	* 0.3	1.5	1.3	* 1.1	* 0.5	* 0.3	* 0.5	* 0.9	0.7
300 and under 400		* 1.8	1.1	3.3	3.5	* 2.4	2.2	3.3	5.4	7.6	3.0
400 and under 500		2.7	1.9	6.7	10.8	12.0	18.2	16.0	35.7	27.0	12.5
500 and under 600		3.8	5.4	13.5	20.8	26.5	31.7	20.8	21.7	24.9	18.1
600 and under 700		6.2	10.7	16.1	17.5	24.1	22.2	15.5	18.7	14.3	15.9
700 and under 800		7.5	12.5	15.3	12.8	15.8	12.2	11.6	8.5	9.8	12.1
800 and under 900		6.8	23.0	11.9	9.2	8.7	6.1	9.2	4.0	5.2	10.8
900 and under 1 000		8.6	16.2	9.4	7.5	4.1	3.2	6.0	2.4	3.2	7.8
1 000 and under 1 100		11.5	9.2	6.7	5.2	1.8	1.6	4.9	0.9	1.8	5.3
1 100 and under 1 200		9.2	5.4	4.1	3.4	* 1.7	* 0.8	3.1	* 0.6	1.2	3.4
1 200 and under 1 300		6.4	4.2	3.0	2.0	* 0.4	0.3	2.5	* 0.5	0.6	2.4
1 300 and under 1 400		6.3	2.6	2.1	1.6	* 0.2	0.3	1.6	* 0.2	* 0.7	1.8
1 400 and under 1 500		5.1	1.5	1.1	0.9	* 0.1	* 0.3	1.3	* 0.1	* 0.3	1.2
1 500 and under 1 600		4.1	1.3	0.9	0.8	—	* 0.1	0.9	* 0.1	* 0.2	0.9
1 600 and under 1 700		3.1	1.1	* 0.9	0.6	* 0.1	—	0.6	—	* 0.4	0.8
1 700 and under 1 800		* 3.1	0.6	0.5	0.6	—	—	0.7	—	* 0.2	0.6
1 800 and under 1 900		2.2	0.5	0.4	0.3	—	—	0.5	—	* 0.2	0.4
1 900 and under 2 000		1.5	0.3	* 0.3	* 0.3	—	—	* 0.4	* 0.1	—	0.3
2 000 and over		9.5	2.0	1.2	0.5	* 0.2	* 0.1	0.4	* 0.1	* 0.1	1.4
<b>Total</b>		<b>100.0</b>	<b>100.0</b>	<b>100.0</b>	<b>100.0</b>	<b>100.0</b>	<b>100.0</b>	<b>100.0</b>	<b>100.0</b>	<b>100.0</b>	<b>100.0</b>
PERSONS											
		\$	\$	\$	\$	\$	\$	\$	\$	\$	\$
10th percentile		607.10	610.00	457.00	449.60	451.40	450.40	446.20	409.10	400.40	451.80
20th percentile		751.40	702.90	548.20	513.80	511.90	494.90	500.10	444.70	445.50	514.00
<b>25th percentile</b>		<b>837.30</b>	<b>746.00</b>	<b>586.50</b>	<b>540.10</b>	<b>534.80</b>	<b>509.00</b>	<b>521.70</b>	<b>459.80</b>	<b>463.10</b>	<b>541.80</b>
30th percentile		904.90	783.40	614.20	564.10	550.20	526.40	543.90	470.50	481.10	572.00
40th percentile		1 007.20	844.40	682.00	614.40	590.70	557.60	595.40	492.70	510.00	629.20
<b>50th percentile (median)</b>		<b>1 106.20</b>	<b>888.40</b>	<b>748.40</b>	<b>673.40</b>	<b>623.20</b>	<b>590.20</b>	<b>659.00</b>	<b>530.60</b>	<b>544.20</b>	<b>693.80</b>
60th percentile		1 221.80	922.10	815.10	739.10	668.60	631.00	727.80	579.80	588.60	772.40
70th percentile		1 371.00	986.10	905.00	829.90	715.30	674.60	821.60	625.90	652.80	866.60
<b>75th percentile</b>		<b>1 464.50</b>	<b>1 028.20</b>	<b>962.00</b>	<b>884.10</b>	<b>743.40</b>	<b>700.20</b>	<b>877.90</b>	<b>647.80</b>	<b>689.90</b>	<b>913.80</b>
80th percentile		1 586.90	1 091.50	1 003.90	937.70	781.60	731.70	943.40	678.80	732.10	974.60
90th percentile		1 963.70	1 297.00	1 205.20	1 124.40	880.60	839.80	1 169.20	780.60	870.80	1 191.40
<b>Average earnings</b>		<b>1 236.00</b>	<b>939.60</b>	<b>808.40</b>	<b>744.80</b>	<b>652.20</b>	<b>624.90</b>	<b>742.50</b>	<b>573.20</b>	<b>603.30</b>	<b>782.20</b>

(a) See paragraph 8 of the Explanatory notes.

## AVERAGE WEEKLY EARNINGS, Full-time Adult Employees—Occupation

	ORDINARY TIME.....				OVERTIME	TOTAL
	<i>Base pay</i>	<i>Payment by measured result</i>	<i>Overaward and overagreement pay</i>	<i>Total</i>	<i>Total</i>	<i>Total</i>
	\$	\$	\$	\$	\$	\$
MALES						
Managers and administrators(a)	1 250.70	15.90	* 4.80	1 271.40	5.40	1 276.80
Professionals	985.10	6.80	2.10	994.00	16.00	1 010.00
Associate professionals	832.00	* 11.10	2.20	845.30	31.30	876.60
Tradespersons and related workers	648.10	7.50	10.90	666.50	90.20	756.70
Advanced clerical and service workers	742.10	* 4.50	* 5.20	751.80	17.70	769.50
Intermediate clerical, sales and service workers	650.40	18.00	5.40	673.70	24.50	698.20
Intermediate production and transport workers	617.70	13.10	8.20	638.90	125.40	764.30
Elementary clerical, sales and service workers	573.20	* 10.00	* 3.10	586.30	37.00	623.30
Labourers and related workers	531.50	7.30	5.60	544.40	85.90	630.40
<b>All occupations</b>	<b>771.50</b>	<b>10.70</b>	<b>5.70</b>	<b>787.90</b>	<b>55.40</b>	<b>843.30</b>
FEMALES						
Managers and administrators(a)	1 075.90	* 1.00	* 1.00	1 077.90	* 4.50	1 082.40
Professionals	846.70	* 4.00	1.20	851.90	7.10	859.00
Associate professionals	668.30	* 2.70	* 2.40	673.40	9.70	683.10
Tradespersons and related workers	511.10	* 0.70	* 7.70	519.50	27.50	547.00
Advanced clerical and service workers	607.70	* 1.60	4.00	613.30	* 14.40	627.70
Intermediate clerical, sales and service workers	566.90	1.70	3.20	571.80	10.30	582.10
Intermediate production and transport workers	512.00	* 3.50	* 5.60	521.20	52.00	573.20
Elementary clerical, sales and service workers	502.30	* 2.70	* 2.20	507.10	15.70	522.80
Labourers and related workers	483.00	* 3.10	* 3.40	489.50	36.50	526.00
<b>All occupations</b>	<b>661.20</b>	<b>2.50</b>	<b>2.70</b>	<b>666.40</b>	<b>13.00</b>	<b>679.40</b>
PERSONS						
Managers and administrators(a)	1 214.00	12.80	* 4.00	1 230.80	* 5.20	1 236.00
Professionals	920.60	5.50	1.70	927.80	11.90	939.60
Associate professionals	774.30	* 8.10	2.30	784.70	23.70	808.40
Tradespersons and related workers	640.30	7.10	10.70	658.20	86.60	744.80
Advanced clerical and service workers	630.90	* 2.10	4.30	637.20	* 15.00	652.20
Intermediate clerical, sales and service workers	597.70	7.70	4.00	609.40	15.50	624.90
Intermediate production and transport workers	605.60	12.00	7.90	625.50	117.00	742.50
Elementary clerical, sales and service workers	537.80	* 6.40	* 2.60	546.80	26.40	573.20
Labourers and related workers	518.90	6.20	5.10	530.20	73.10	603.30
<b>All occupations</b>	<b>730.40</b>	<b>7.70</b>	<b>4.60</b>	<b>742.60</b>	<b>39.60</b>	<b>782.20</b>

(a) See paragraph 8 of the Explanatory notes.

## AVERAGE WEEKLY EARNINGS, Full-time Adult Employees—Industry

	ORDINARY TIME.....			OVERTIME		TOTAL
	Base pay	Payment by measured result	Overaward and overagreement pay	Total	Total	Total
	\$	\$	\$	\$	\$	\$
MALES						
Mining	1 125.40	91.00	* 7.50	1 223.80	143.80	1 367.70
Manufacturing	691.00	7.50	10.40	708.90	84.90	793.80
Electricity, gas and water supply	876.10	* 0.50	* 0.60	877.20	74.80	952.00
Construction	757.20	* 4.70	* 4.90	766.80	88.60	855.40
Wholesale trade	737.10	18.20	6.70	761.90	26.60	788.50
Retail trade	567.40	23.90	8.20	599.50	19.10	618.60
Accommodation, cafes and restaurants	588.10	* 0.10	* 1.40	589.60	* 14.90	604.50
Transport and storage	749.90	* 4.30	* 3.00	757.20	107.60	864.80
Communication services	874.60	* 0.50	* 0.40	875.50	101.50	977.00
Finance and insurance	1 066.70	* 17.10	* 7.60	1 091.40	12.30	1 103.70
Property and business services	864.30	14.90	* 5.20	884.40	27.90	912.30
Government administration and defence(a)	786.90	* 0.50	0.90	788.30	30.00	818.20
Education	889.70	* 2.50	2.60	894.70	* 6.00	900.70
Health and community services	860.10	* 1.40	* 2.40	864.00	39.10	903.10
Cultural and recreational services	808.00	* 4.50	* 4.60	817.10	18.80	836.00
Personal and other services(b)	751.40	* 0.50	* 1.00	752.90	74.40	827.30
<b>All industries(c)</b>	<b>771.50</b>	<b>10.70</b>	<b>5.70</b>	<b>787.90</b>	<b>55.40</b>	<b>843.30</b>
FEMALES						
Mining	859.80	* 4.60	* 1.40	865.80	* 18.60	884.30
Manufacturing	572.40	* 3.90	4.90	581.20	30.00	611.30
Electricity, gas and water supply	739.80	—	* 1.60	741.40	* 15.10	756.50
Construction	575.20	* 1.30	* 0.80	577.30	* 14.70	592.00
Wholesale trade	593.40	* 4.60	* 8.60	606.50	13.90	620.40
Retail trade	527.70	* 1.90	2.20	531.90	8.60	540.50
Accommodation, cafes and restaurants	523.90	* 0.60	* 2.90	527.40	* 7.70	535.10
Transport and storage	658.70	* 0.80	* 1.00	660.50	31.10	691.50
Communication services	765.90	* 0.20	* 0.20	766.30	22.50	788.70
Finance and insurance	693.80	* 0.50	3.40	697.70	10.20	707.90
Property and business services	688.20	* 5.80	* 2.60	696.60	* 11.10	707.70
Government administration and defence(a)	730.50	—	* 0.50	730.90	11.70	742.70
Education	786.50	* 1.90	* 0.80	789.20	* 1.30	790.60
Health and community services	675.10	* 1.30	* 2.90	679.20	12.20	691.40
Cultural and recreational services	691.30	* 1.80	* 5.20	698.20	* 9.20	707.50
Personal and other services(b)	586.30	* 7.70	* 0.40	594.40	21.50	615.90
<b>All industries(c)</b>	<b>661.20</b>	<b>2.50</b>	<b>2.70</b>	<b>666.40</b>	<b>13.00</b>	<b>679.40</b>

(a) Excludes permanent defence forces.

(c) Excludes Agriculture, forestry and fishing.

(b) Excludes private households employing staff.

AVERAGE WEEKLY EARNINGS, Full-time Adult Employees—Industry *continued*

	ORDINARY TIME.....			OVERTIME		TOTAL
	<i>Base pay</i>	<i>Payment by measured result</i>	<i>Overaward and overagreement pay</i>	<i>Total</i>	<i>Total</i>	<i>Total</i>
	\$	\$	\$	\$	\$	\$
PERSONS						
Mining	1 094.60	81.00	* 6.80	1 182.30	129.30	1 311.70
Manufacturing	665.00	6.70	9.20	680.90	72.80	753.80
Electricity, gas and water supply	853.60	* 0.40	* 0.80	854.70	64.90	919.70
Construction	735.40	* 4.30	* 4.40	744.10	79.80	823.80
Wholesale trade	697.50	14.40	7.20	719.10	23.10	742.20
Retail trade	551.70	15.20	5.80	572.70	14.90	587.60
Accommodation, cafes and restaurants	561.30	* 0.30	* 2.00	563.60	* 11.90	575.50
Transport and storage	728.30	* 3.50	* 2.50	734.30	89.50	823.80
Communication services	845.30	* 0.40	* 0.30	846.10	80.20	926.30
Finance and insurance	884.90	* 9.00	* 5.50	899.40	11.30	910.70
Property and business services	788.50	11.00	* 4.10	803.60	20.70	824.30
Government administration and defence(a)	765.80	* 0.30	0.70	766.90	23.20	790.00
Education	827.70	* 2.10	1.50	831.40	3.20	834.60
Health and community services	727.00	* 1.30	* 2.80	731.10	19.70	750.90
Cultural and recreational services	761.10	* 3.40	* 4.80	769.40	15.00	784.40
Personal and other services(b)	695.00	* 3.00	* 0.80	698.70	56.30	755.00
<b>All industries(c)</b>	<b>730.40</b>	<b>7.70</b>	<b>4.60</b>	<b>742.60</b>	<b>39.60</b>	<b>782.20</b>

(a) Excludes permanent defence forces.

(c) Excludes Agriculture, forestry and fishing.

(b) Excludes private households employing staff.

## AVERAGE WEEKLY EARNINGS, Full-time Adult Employees—Sector

	ORDINARY TIME.....				OVERTIME	TOTAL
	<i>Base pay</i>	<i>Payment by measured result</i>	<i>Overaward and overagreement pay</i>	<i>Total</i>	<i>Total</i>	<i>Total</i>
	\$	\$	\$	\$	\$	\$
MALES						
Private	750.30	13.50	7.00	770.90	56.30	827.20
Public	844.90	1.10	1.00	847.00	52.30	899.30
<b>Private and public</b>	<b>771.50</b>	<b>10.70</b>	<b>5.70</b>	<b>787.90</b>	<b>55.40</b>	<b>843.30</b>
FEMALES						
Private	618.80	3.60	3.60	626.00	14.10	640.10
Public	764.40	—	* 0.50	764.90	10.40	775.30
<b>Private and public</b>	<b>661.20</b>	<b>2.50</b>	<b>2.70</b>	<b>666.40</b>	<b>13.00</b>	<b>679.40</b>
PERSONS						
Private	704.10	10.00	5.80	719.90	41.50	761.40
Public	809.80	0.60	0.80	811.20	34.00	845.20
<b>Private and public</b>	<b>730.40</b>	<b>7.70</b>	<b>4.60</b>	<b>742.60</b>	<b>39.60</b>	<b>782.20</b>



## AVERAGE WEEKLY EARNINGS, Full-time Adult Employees—States &amp; Territories

	ORDINARY TIME.....				OVERTIME	TOTAL
	<i>Base pay</i>	<i>Payment by measured result</i>	<i>Overaward and overagreement pay</i>	<i>Total</i>	<i>Total</i>	<i>Total</i>
	\$	\$	\$	\$	\$	\$
MALES						
New South Wales	805.10	12.10	6.50	823.70	56.70	880.40
Victoria	761.70	8.60	4.70	775.00	50.40	825.40
Queensland	734.20	14.80	7.60	756.60	60.90	817.50
South Australia	718.60	* 10.30	4.30	733.30	46.60	779.80
Western Australia	775.00	* 9.00	4.70	788.70	66.40	855.10
Tasmania	697.30	5.30	* 4.30	706.80	42.40	749.20
Northern Territory	753.50	* 4.40	* 2.70	760.60	* 87.50	848.10
Australian Capital Territory	905.50	* 3.70	* 2.40	911.60	31.10	942.70
<b>Australia</b>	<b>771.50</b>	<b>10.70</b>	<b>5.70</b>	<b>787.90</b>	<b>55.40</b>	<b>843.30</b>
FEMALES						
New South Wales	693.20	* 3.20	3.50	699.90	13.30	713.20
Victoria	646.30	* 2.30	2.50	651.10	13.20	664.30
Queensland	640.80	* 1.50	2.00	644.30	13.00	657.30
South Australia	620.20	* 2.60	* 1.90	624.60	14.90	639.50
Western Australia	634.00	* 2.90	* 3.20	640.10	13.00	653.00
Tasmania	627.40	* 0.90	* 1.00	629.20	6.00	635.20
Northern Territory	668.30	* 0.60	* 0.90	669.80	11.20	681.00
Australian Capital Territory	756.40	* 2.80	* 0.20	759.40	8.30	767.60
<b>Australia</b>	<b>661.20</b>	<b>2.50</b>	<b>2.70</b>	<b>666.40</b>	<b>13.00</b>	<b>679.40</b>
PERSONS						
New South Wales	762.50	8.70	5.40	776.60	40.20	816.80
Victoria	719.60	6.30	3.90	729.80	36.90	766.60
Queensland	698.90	9.80	5.50	714.20	42.80	757.10
South Australia	682.80	* 7.50	3.40	693.80	35.00	728.80
Western Australia	723.30	6.80	4.10	734.20	46.80	781.00
Tasmania	674.10	3.80	* 3.20	681.10	30.40	711.50
Northern Territory	719.70	* 2.90	* 2.00	724.60	* 57.20	781.80
Australian Capital Territory	847.00	* 3.30	* 1.50	851.90	22.20	874.00
<b>Australia</b>	<b>730.40</b>	<b>7.70</b>	<b>4.60</b>	<b>742.60</b>	<b>39.60</b>	<b>782.20</b>

## TOTAL EARNINGS AND HOURS, Non-Managerial Employees—Occupation and Employee Type

	AVERAGE WEEKLY EARNINGS			AVERAGE WEEKLY HOURS PAID FOR.....			AVERAGE HOURLY EARNINGS.....		
	Males	Females	Persons	Males	Females	Persons	Males	Females	Persons
	\$	\$	\$	hours	hours	hours	\$	\$	\$
PERMANENT									
Professionals	964.90	756.30	847.40	37.3	33.2	35.0	25.9	22.8	24.2
Associate professionals	903.60	633.00	790.30	39.5	34.5	37.4	22.9	18.4	21.1
Advanced clerical and service workers	716.60	437.50	692.30	41.2	34.5	40.6	17.4	12.7	17.1
Tradespersons and related workers	709.90	570.40	589.80	36.5	34.5	34.8	19.4	16.5	16.9
Intermediate clerical, sales and service workers	659.10	491.20	540.80	38.0	33.3	34.7	17.4	14.8	15.6
Intermediate production and transport workers	744.90	510.40	712.10	42.5	36.5	41.7	17.5	14.0	17.1
Elementary clerical, sales and service workers	547.60	400.40	456.90	36.5	31.0	33.1	15.0	12.9	13.8
Labourers and related workers	567.70	394.70	507.00	38.5	30.4	35.6	14.7	13.0	14.2
<b>All occupations</b>	<b>746.80</b>	<b>555.10</b>	<b>656.90</b>	<b>39.5</b>	<b>33.1</b>	<b>36.5</b>	<b>18.9</b>	<b>16.8</b>	<b>18.0</b>
TEMPORARY									
Professionals	837.90	632.80	707.90	33.6	29.8	31.2	24.90	21.30	22.70
Associate professionals	701.30	584.90	628.50	33.6	34.0	33.9	20.90	17.20	18.60
Advanced clerical and service workers	547.40	383.10	532.70	35.2	26.0	34.3	15.60	14.70	15.50
Tradespersons and related workers	760.60	481.60	492.90	37.9	29.9	30.3	20.10	16.10	16.30
Intermediate clerical, sales and service workers	493.70	412.70	427.80	31.7	29.0	29.5	15.60	14.20	14.50
Intermediate production and transport workers	544.50	344.50	462.80	36.4	26.5	32.3	15.00	13.00	14.30
Elementary clerical, sales and service workers	373.40	315.30	334.10	27.5	26.0	26.5	13.60	12.10	12.60
Labourers and related workers	462.90	341.00	393.90	32.0	27.3	29.3	14.40	12.50	13.40
<b>All occupations</b>	<b>637.00</b>	<b>487.10</b>	<b>539.50</b>	<b>33.0</b>	<b>29.2</b>	<b>30.5</b>	<b>19.30</b>	<b>16.70</b>	<b>17.70</b>
CASUAL									
Professionals	467.90	319.90	364.70	16.7	12.9	14.1	28.10	24.70	25.90
Associate professionals	458.50	293.10	368.20	20.5	18.1	19.2	22.40	16.20	19.20
Advanced clerical and service workers	503.30	254.80	438.30	27.7	17.7	25.1	18.20	14.40	17.50
Tradespersons and related workers	288.20	313.40	312.00	18.9	19.9	19.9	15.20	15.70	15.70
Intermediate clerical, sales and service workers	316.10	273.60	281.70	20.8	18.7	19.1	15.20	14.60	14.70
Intermediate production and transport workers	367.20	217.10	324.90	24.1	16.2	21.9	15.20	13.40	14.80
Elementary clerical, sales and service workers	217.80	188.90	198.30	16.5	14.9	15.4	13.20	12.70	12.90
Labourers and related workers	298.10	221.40	261.90	22.2	17.7	20.1	13.40	12.50	13.00
<b>All occupations</b>	<b>334.20</b>	<b>248.20</b>	<b>280.30</b>	<b>20.8</b>	<b>16.6</b>	<b>18.2</b>	<b>16.10</b>	<b>14.90</b>	<b>15.40</b>
TOTAL									
Professionals	901.10	668.40	764.10	34.7	29.3	31.5	25.90	22.80	24.20
Associate professionals	854.40	580.00	732.90	37.5	32.0	35.1	22.80	18.10	20.90
Advanced clerical and service workers	698.10	394.10	666.80	40.1	30.5	39.1	17.40	12.90	17.10
Tradespersons and related workers	683.70	529.50	548.80	35.4	32.2	32.6	19.30	16.40	16.80
Intermediate clerical, sales and service workers	592.40	428.00	471.60	34.7	29.1	30.6	17.10	14.70	15.40
Intermediate production and transport workers	679.60	411.30	633.50	39.4	29.7	37.7	17.30	13.80	16.80
Elementary clerical, sales and service workers	394.10	289.90	326.80	27.2	22.6	24.2	14.50	12.80	13.50
Labourers and related workers	480.40	319.80	415.80	33.2	24.9	29.9	14.50	12.80	13.90
<b>All occupations</b>	<b>669.20</b>	<b>463.20</b>	<b>563.40</b>	<b>36.0</b>	<b>28.2</b>	<b>32.0</b>	<b>18.60</b>	<b>16.40</b>	<b>17.60</b>

## AVERAGE WEEKLY TOTAL HOURS PAID FOR, Non-Managerial Employees—Category of Employee

## FULL-TIME EMPLOYEES.....

## PART-TIME EMPLOYEES.....

	<i>Adult</i>	<i>Junior</i>	<i>Total</i>		<i>Adult</i>	<i>Junior</i>	<i>Total</i>
	hours	hours	hours		hours	hours	hours

## MALES

Ordinary time	38.2	38.3	38.2	17.5	11.8	16.3
Overtime	2.6	1.6	2.5	0.4	0.1	0.4
<b>Total</b>	<b>40.8</b>	<b>40.0</b>	<b>40.8</b>	<b>17.9</b>	<b>11.9</b>	<b>16.7</b>

## FEMALES

Ordinary time	37.7	38.1	37.7	18.7	12.3	17.9
Overtime	0.6	0.6	0.6	0.2	0.2	0.2
<b>Total</b>	<b>38.3</b>	<b>38.7</b>	<b>38.3</b>	<b>18.9</b>	<b>12.4</b>	<b>18.1</b>

## PERSONS

Ordinary time	38.0	38.2	38.0	18.4	12.1	17.5
Overtime	1.8	1.2	1.8	0.3	0.2	0.3
<b>Total</b>	<b>39.8</b>	<b>39.5</b>	<b>39.8</b>	<b>18.7</b>	<b>12.2</b>	<b>17.7</b>

## WEEKLY TOTAL EARNINGS, Distribution of Full-time Adult Non-managerial Employees—Industry

		Manufacturing	Wholesale trade; Retail trade	Transport and storage; Communication services	Finance and insurance; Property and business services	Government administration and defence(a)	Education; Health and community services	Accommodation; Cultural; Personal services(b)	Other(c)	All industries(d)
MALES										
Weekly total earnings (\$)	%	%	%	%	%	%	%	%	%	%
Under 200	* 0.5	* 0.2	* 0.1	* 0.2	—	0.4	* 0.5	—	0.3	
200 and under 300	* 0.1	* 1.3	* 0.1	* 0.2	* 0.3	* 0.6	* 0.5	* 0.4	0.4	
300 and under 400	2.8	4.8	* 0.3	* 1.1	* 0.3	* 1.0	* 4.0	* 1.4	2.2	
400 and under 500	11.7	19.6	* 7.4	8.3	6.0	6.7	12.4	3.5	10.2	
500 and under 600	17.7	25.9	13.0	15.2	23.0	11.5	18.4	11.9	17.3	
600 and under 700	17.8	18.4	15.1	17.0	17.9	13.0	15.8	12.7	16.3	
700 and under 800	14.4	10.1	14.2	11.4	19.5	11.4	12.4	12.0	13.0	
800 and under 900	9.6	7.8	14.4	15.2	14.3	18.8	11.4	9.9	12.0	
900 and under 1 000	8.7	4.5	9.5	7.6	9.0	15.2	9.9	10.0	8.9	
1 000 and under 1 100	6.6	2.9	7.4	5.5	4.0	9.7	5.4	8.2	6.2	
1 100 and under 1 200	3.5	1.7	5.8	5.1	2.3	2.8	4.2	6.5	3.9	
1 200 and under 1 300	2.2	* 0.9	3.3	3.8	* 1.0	2.8	1.3	5.6	2.6	
1 300 and under 1 400	1.8	* 0.5	2.8	2.3	1.3	1.2	1.1	3.7	1.9	
1 400 and under 1 500	1.1	* 0.4	1.6	* 1.6	* 0.4	0.8	* 0.8	2.9	1.2	
1 500 and under 1 600	0.4	* 0.2	* 1.0	* 1.5	* 0.4	* 0.5	* 0.7	2.6	0.9	
1 600 and under 1 700	0.4	* 0.2	* 0.9	* 1.3	—	* 0.5	* 0.2	2.6	0.8	
1 700 and under 1 800	* 0.3	* 0.1	* 1.1	* 0.6	—	* 0.5	* 0.1	1.9	0.6	
1 800 and under 1 900	* 0.1	* 0.3	* 0.5	* 0.4	* 0.1	* 0.4	* 0.1	1.4	0.4	
1 900 and under 2 000	* 0.2	—	* 0.5	* 0.4	—	* 0.1	* 0.1	0.7	0.3	
2 000 and over	* 0.2	* 0.2	0.8	1.2	* 0.2	2.0	* 0.5	1.9	0.8	
<b>Total</b>	<b>100.0</b>	<b>100.0</b>	<b>100.0</b>	<b>100.0</b>	<b>100.0</b>	<b>100.0</b>	<b>100.0</b>	<b>100.0</b>	<b>100.0</b>	<b>100.0</b>

MALES										
	\$	\$	\$	\$	\$	\$	\$	\$	\$	
10th percentile	460.40	418.90	517.70	500.40	514.50	504.00	443.70	538.80	475.40	
20th percentile	528.20	474.90	592.00	570.10	558.10	597.50	508.30	611.10	539.60	
<b>25th percentile</b>	<b>558.30</b>	<b>493.60</b>	<b>632.10</b>	<b>600.00</b>	<b>579.40</b>	<b>635.20</b>	<b>541.70</b>	<b>654.20</b>	<b>568.80</b>	
30th percentile	582.70	514.20	659.60	627.90	602.10	670.30	565.50	700.10	598.00	
40th percentile	639.80	548.40	725.50	689.00	661.90	767.40	623.00	778.80	657.50	
<b>50th percentile (median)</b>	<b>695.70</b>	<b>589.60</b>	<b>795.90</b>	<b>772.30</b>	<b>715.50</b>	<b>845.80</b>	<b>686.60</b>	<b>875.10</b>	<b>724.20</b>	
60th percentile	758.90	641.00	866.40	839.30	772.70	893.30	770.60	974.80	802.60	
70th percentile	849.40	698.50	959.10	906.10	813.80	932.20	850.90	1 101.30	887.60	
<b>75th percentile</b>	<b>902.60</b>	<b>739.10</b>	<b>1 010.50</b>	<b>968.60</b>	<b>845.80</b>	<b>962.00</b>	<b>896.30</b>	<b>1 173.60</b>	<b>932.00</b>	
80th percentile	961.50	796.60	1 075.00	1 053.60	887.60	1 011.10	955.10	1 261.30	991.80	
90th percentile	1 103.90	938.10	1 271.30	1 282.50	994.60	1 136.10	1 086.30	1 540.10	1 181.00	
<b>Average earnings</b>	<b>751.50</b>	<b>645.60</b>	<b>860.20</b>	<b>842.40</b>	<b>741.50</b>	<b>854.00</b>	<b>741.40</b>	<b>960.50</b>	<b>792.20</b>	

(a) Excludes permanent defence forces.

(c) Includes Mining, Electricity, gas and water supply and Construction.

(b) Includes Accommodation, cafes and restaurants, Cultural and recreational services and Personal and other services. Excludes private households employing staff.

(d) Excludes Agriculture, forestry and fishing.

		Manufacturing	Wholesale trade and Retail trade	Transport and storage; Communication services	Finance and insurance; Property and business services	Government administration and defence(a)	Education; Health and community services	Accommodation; Cultural; Personal services(b)	Other(c)	All industries(d)
FEMALES										
Weekly total earnings (\$)		%	%	%	%	%	%	%	%	%
Under 200		* 0.7	* 0.2	—	* 0.1	* 0.2	* 0.3	* 0.2	—	0.2
200 and under 300		* 0.3	* 0.5	—	* 0.4	* 0.1	* 0.2	* 1.1	* 0.4	* 0.4
300 and under 400		5.7	3.7	* 1.9	2.6	* 0.5	* 2.1	4.4	* 0.5	2.8
400 and under 500		25.2	37.7	14.1	14.6	6.3	13.9	29.1	13.1	19.2
500 and under 600		26.4	29.5	19.7	29.6	19.6	18.5	27.7	24.6	24.2
600 and under 700		17.5	14.9	16.7	22.0	29.8	14.4	17.7	23.1	18.0
700 and under 800		11.9	5.2	17.2	13.5	20.1	12.2	9.3	13.8	12.1
800 and under 900		5.8	* 3.0	11.1	8.4	11.7	19.3	4.6	* 12.5	11.1
900 and under 1 000		3.4	1.6	11.5	3.6	6.8	11.8	2.3	* 3.3	6.5
1 000 and under 1 100		* 1.4	* 0.7	3.5	* 1.9	* 2.5	4.4	* 0.9	* 2.8	2.5
1 100 and under 1 200		* 0.8	* 2.2	* 1.5	* 1.4	* 1.1	1.1	* 1.5	* 1.5	1.4
1 200 and under 1 300		* 0.4	* 0.3	* 0.7	* 0.4	* 0.9	0.8	* 0.3	* 2.8	0.6
1 300 and under 1 400		* 0.3	* 0.1	* 0.5	* 0.4	* 0.2	* 0.3	* 0.4	* 0.6	0.3
1 400 and under 1 500		* 0.1	—	* 0.2	* 0.4	* 0.1	* 0.1	* 0.2	* 0.2	0.2
1 500 and under 1 600		—	* 0.1	—	* 0.2	—	* 0.1	* 0.2	* 0.3	* 0.1
1 600 and under 1 700		* 0.1	—	* 0.5	* 0.1	—	* 0.2	—	—	* 0.1
1 700 and under 1 800		—	* 0.1	* 0.1	—	—	* 0.1	* 0.1	* 0.2	* 0.1
1 800 and under 1 900		—	—	—	* 0.1	—	—	—	* 0.1	—
1 900 and under 2 000		—	—	—	* 0.1	—	* 0.1	* 0.1	—	* 0.1
2 000 and over		* 0.1	* 0.1	* 0.6	* 0.1	—	* 0.1	—	* 0.1	* 0.1
<b>Total</b>		<b>100.0</b>	<b>100.0</b>	<b>100.0</b>	<b>100.0</b>	<b>100.0</b>	<b>100.0</b>	<b>100.0</b>	<b>100.0</b>	<b>100.0</b>

FEMALES										
		\$	\$	\$	\$	\$	\$	\$	\$	\$
10th percentile		406.30	418.90	458.90	461.70	519.10	463.50	421.90	481.00	441.10
20th percentile		456.60	444.90	532.50	502.60	576.40	519.10	453.60	519.10	487.10
<b>25th percentile</b>		<b>476.80</b>	<b>458.60</b>	<b>554.30</b>	<b>520.40</b>	<b>592.60</b>	<b>544.10</b>	<b>468.90</b>	<b>549.20</b>	<b>506.40</b>
30th percentile		493.20	468.00	577.20	537.30	610.50	575.20	488.50	563.80	529.30
40th percentile		528.90	491.60	622.60	572.20	641.00	625.00	517.10	605.40	569.60
<b>50th percentile (median)</b>		<b>565.00</b>	<b>521.90</b>	<b>682.30</b>	<b>611.70</b>	<b>675.80</b>	<b>704.90</b>	<b>546.40</b>	<b>653.90</b>	<b>613.90</b>
60th percentile		607.60	552.20	736.70	650.00	716.10	787.80	580.70	691.50	671.80
70th percentile		659.40	597.40	805.80	705.10	770.00	863.20	633.90	760.70	740.40
<b>75th percentile</b>		<b>692.00</b>	<b>614.60</b>	<b>840.80</b>	<b>745.60</b>	<b>792.20</b>	<b>888.10</b>	<b>668.80</b>	<b>795.70</b>	<b>781.40</b>
80th percentile		731.90	645.10	879.00	771.80	824.00	898.40	699.30	810.90	830.80
90th percentile		831.10	758.20	974.90	872.20	912.40	961.90	809.40	947.70	921.10
<b>Average earnings</b>		<b>600.70</b>	<b>563.90</b>	<b>714.80</b>	<b>651.70</b>	<b>701.50</b>	<b>719.80</b>	<b>589.90</b>	<b>692.60</b>	<b>659.00</b>

(a) Excludes permanent defence forces.

(c) Includes Mining, Electricity, gas and water supply and Construction.

(b) Includes Accommodation, cafes and restaurants, Cultural and recreational services and Personal and other services. Excludes private households employing staff.

(d) Excludes Agriculture, forestry and fishing.

WEEKLY TOTAL EARNINGS, Distribution of Full-time Adult Non-managerial Employees—Industry *continued*

		Manufacturing	Wholesale trade and Retail trade	Transport and storage; Communication services	Finance and insurance; Property and business services	Government administration and defence(a)	Education; Health and community services	Accommodation; Cultural; Personal services(b)	Other(c)	All industries(d)
PERSONS										
Weekly total earnings (\$)		%	%	%	%	%	%	%	%	%
Under 200		* 0.5	* 0.2	* 0.1	* 0.2	* 0.1	* 0.3	* 0.4	—	0.3
200 and under 300		* 0.2	* 1.0	* 0.1	* 0.3	* 0.2	* 0.3	* 0.7	* 0.4	0.4
300 and under 400		3.5	4.4	* 0.7	1.9	* 0.4	1.7	4.1	* 1.3	2.4
400 and under 500		14.8	26.2	9.1	11.5	6.1	11.6	19.1	4.7	13.8
500 and under 600		19.7	27.2	14.7	22.6	21.7	16.3	22.1	13.6	20.0
600 and under 700		17.7	17.1	15.5	19.6	22.5	14.0	16.6	14.1	17.0
700 and under 800		13.8	8.3	15.0	12.5	19.7	12.0	11.2	12.2	12.6
800 and under 900		8.7	6.1	13.6	11.7	13.3	19.2	8.6	10.3	11.6
900 and under 1 000		7.5	3.4	10.0	5.6	8.2	12.9	6.9	9.1	7.9
1 000 and under 1 100		5.4	2.1	6.4	3.7	3.4	6.1	3.6	7.5	4.8
1 100 and under 1 200		2.9	* 1.9	4.7	3.2	1.8	1.6	3.1	5.8	2.9
1 200 and under 1 300		1.8	* 0.7	2.7	2.1	1.0	1.4	0.9	5.2	1.8
1 300 and under 1 400		1.5	* 0.4	2.2	1.3	0.9	0.6	0.8	3.3	1.2
1 400 and under 1 500		0.9	* 0.3	1.3	1.0	* 0.3	0.4	* 0.6	2.6	0.8
1 500 and under 1 600		0.3	* 0.1	* 0.8	* 0.8	* 0.3	0.2	* 0.5	2.3	0.6
1 600 and under 1 700		0.3	* 0.1	* 0.8	* 0.7	—	0.3	* 0.1	2.3	0.5
1 700 and under 1 800		* 0.2	* 0.1	* 0.9	* 0.3	—	* 0.2	* 0.1	1.7	0.4
1 800 and under 1 900		* 0.1	* 0.2	* 0.4	* 0.2	—	* 0.2	* 0.1	1.2	0.3
1 900 and under 2 000		* 0.1	—	* 0.4	* 0.2	—	* 0.1	* 0.1	0.6	0.2
2 000 and over		* 0.2	* 0.1	0.8	0.7	* 0.1	0.7	* 0.3	1.7	0.5
<b>Total</b>		<b>100.0</b>	<b>100.0</b>	<b>100.0</b>	<b>100.0</b>	<b>100.0</b>	<b>100.0</b>	<b>100.0</b>	<b>100.0</b>	<b>100.0</b>
PERSONS										
		\$	\$	\$	\$	\$	\$	\$	\$	\$
10th percentile		446.30	418.90	500.10	480.60	516.60	472.60	427.70	524.00	458.70
20th percentile		502.90	459.30	573.50	523.50	562.90	536.50	477.30	599.50	513.80
<b>25th percentile</b>		<b>530.30</b>	<b>475.40</b>	<b>601.40</b>	<b>543.10</b>	<b>585.40</b>	<b>566.50</b>	<b>500.70</b>	<b>628.10</b>	<b>538.90</b>
30th percentile		556.20	491.30	634.70	570.10	605.70	597.90	522.50	668.00	563.20
40th percentile		607.20	528.30	698.00	615.90	652.80	666.00	559.60	748.30	614.90
<b>50th percentile (median)</b>		<b>664.60</b>	<b>561.20</b>	<b>763.30</b>	<b>672.30</b>	<b>695.80</b>	<b>753.00</b>	<b>615.80</b>	<b>827.00</b>	<b>675.00</b>
60th percentile		724.50	603.40	833.00	730.10	744.60	834.10	676.40	930.90	747.00
70th percentile		797.00	654.30	906.20	809.40	794.70	889.40	760.30	1 052.90	830.20
<b>75th percentile</b>		<b>850.10</b>	<b>692.10</b>	<b>963.70</b>	<b>848.30</b>	<b>822.90</b>	<b>899.30</b>	<b>809.20</b>	<b>1 131.40</b>	<b>873.90</b>
80th percentile		910.40	734.10	1 017.60	894.80	859.10	924.00	862.50	1 211.50	920.10
90th percentile		1 063.10	886.20	1 202.20	1 108.70	958.90	1 021.60	1 004.40	1 494.30	1 081.80
<b>Average earnings</b>		<b>716.90</b>	<b>615.60</b>	<b>823.50</b>	<b>744.90</b>	<b>725.90</b>	<b>762.80</b>	<b>680.50</b>	<b>925.30</b>	<b>739.40</b>

(a) Excludes permanent defence forces.

(c) Includes Mining, Electricity, gas and water supply and Construction.

(b) Includes Accommodation, cafes and restaurants, Cultural and recreational services and Personal and other services. Excludes private households employing staff.

(d) Excludes Agriculture, forestry and fishing.

## WEEKLY TOTAL EARNINGS, Distribution of Full-time Adult Non-managerial Employees

		New South Wales	Victoria	Queensland	South Australia	Western Australia	Tasmania	Northern Territory	Australian Capital Territory	Australia
MALES										
Weekly total earnings (\$)		%	%	%	%	%	%	%	%	%
Under 200		* 0.2	* 0.3	* 0.1	* 0.5	* 0.3	* 0.2	* 0.9	* 0.1	0.3
200 and under 300		* 0.2	* 0.3	* 0.8	* 0.2	* 1.1	* 0.2	* 0.4	* 0.9	0.4
300 and under 400		2.3	2.7	1.5	* 2.0	2.3	* 2.6	* 2.9	* 0.9	2.2
400 and under 500		8.1	12.4	11.5	9.2	10.2	13.2	6.5	* 7.2	10.2
500 and under 600		16.4	15.8	20.3	21.8	15.6	21.1	17.1	10.5	17.3
600 and under 700		16.0	16.7	16.5	17.3	14.5	18.5	13.5	17.1	16.3
700 and under 800		12.3	12.9	12.9	14.2	13.2	12.4	15.0	18.4	13.0
800 and under 900		13.2	11.2	10.5	11.1	12.5	13.1	11.5	12.6	12.0
900 and under 1 000		9.6	9.0	7.8	8.7	7.9	7.1	8.9	13.0	8.9
1 000 and under 1 100		6.9	5.8	5.9	4.6	6.7	4.4	7.7	7.8	6.2
1 100 and under 1 200		4.3	4.0	3.7	3.4	4.0	2.1	* 4.4	2.9	3.9
1 200 and under 1 300		3.1	2.9	2.1	1.7	2.3	* 1.0	* 3.5	3.1	2.6
1 300 and under 1 400		2.0	2.0	1.5	1.5	2.2	* 0.8	* 1.8	* 1.5	1.9
1 400 and under 1 500		1.3	1.1	1.1	* 1.3	1.5	* 1.1	* 1.4	* 1.6	1.2
1 500 and under 1 600		1.0	0.5	0.9	* 1.0	1.3	* 0.9	* 1.3	* 0.2	0.9
1 600 and under 1 700		0.7	* 1.0	0.6	* 0.4	* 1.1	* 0.5	* 1.1	* 0.6	0.8
1 700 and under 1 800		0.7	* 0.4	0.8	* 0.3	* 0.8	* 0.3	—	—	0.6
1 800 and under 1 900		0.4	* 0.3	0.4	* 0.2	* 0.8	—	* 0.1	* 0.6	0.4
1 900 and under 2 000		* 0.1	* 0.2	* 0.3	* 0.3	* 0.6	* 0.1	* 0.6	* 0.1	0.3
2 000 and over		1.0	* 0.4	0.9	* 0.4	1.3	* 0.4	* 1.3	* 0.7	0.8
<b>Total</b>		<b>100.0</b>	<b>100.0</b>	<b>100.0</b>	<b>100.0</b>	<b>100.0</b>	<b>100.0</b>	<b>100.0</b>	<b>100.0</b>	<b>100.0</b>
MALES										
		\$	\$	\$	\$	\$	\$	\$	\$	\$
10th percentile		491.40	461.40	477.00	481.40	472.70	453.50	490.30	509.30	475.40
20th percentile		552.40	529.10	531.20	537.10	537.40	518.90	564.60	600.60	539.60
<b>25th percentile</b>		<b>583.10</b>	<b>559.70</b>	<b>551.60</b>	<b>557.90</b>	<b>570.30</b>	<b>538.60</b>	<b>586.90</b>	<b>626.80</b>	<b>568.80</b>
30th percentile		612.70	591.90	580.40	577.80	602.80	562.00	613.30	653.60	598.00
40th percentile		676.00	649.20	634.50	635.40	675.80	608.40	683.10	721.40	657.50
<b>50th percentile (median)</b>		<b>749.70</b>	<b>712.10</b>	<b>694.90</b>	<b>693.00</b>	<b>751.10</b>	<b>660.70</b>	<b>751.00</b>	<b>770.20</b>	<b>724.20</b>
60th percentile		831.00	791.70	768.80	763.90	816.30	729.00	823.60	826.20	802.60
70th percentile		915.50	872.50	866.90	850.70	904.40	823.30	910.60	914.40	887.60
<b>75th percentile</b>		<b>962.20</b>	<b>921.20</b>	<b>911.00</b>	<b>885.00</b>	<b>961.70</b>	<b>846.70</b>	<b>965.60</b>	<b>936.20</b>	<b>932.00</b>
80th percentile		1 017.50	979.30	973.90	935.90	1 033.10	883.10	1 033.10	995.40	991.80
90th percentile		1 211.20	1 163.80	1 154.60	1 114.70	1 271.00	1 033.90	1 243.50	1 139.50	1 181.00
<b>Average earnings</b>		<b>815.00</b>	<b>775.90</b>	<b>776.10</b>	<b>756.20</b>	<b>822.30</b>	<b>723.70</b>	<b>821.20</b>	<b>815.00</b>	<b>792.20</b>

WEEKLY TOTAL EARNINGS, Distribution of Full-time Adult Non-managerial Employees *continued*

		New South Wales	Victoria	Queensland	South Australia	Western Australia	Tasmania	Northern Territory	Australian Capital Territory	Australia
FEMALES										
Weekly total earnings (\$)		%	%	%	%	%	%	%	%	%
Under 200		* 0.3	* 0.3	* 0.1	* 0.4	* 0.4	* 0.6	* 0.2	* 0.1	0.2
200 and under 300		* 0.5	* 0.2	* 0.5	* 0.4	* 0.2	* 0.6	* 0.1	* 0.3	* 0.4
300 and under 400		3.1	3.1	1.6	* 2.1	* 4.0	* 4.1	* 2.2	* 0.9	2.8
400 and under 500		17.1	18.6	24.3	17.1	23.3	20.7	18.2	8.1	19.2
500 and under 600		22.5	23.9	24.3	33.9	24.5	25.7	22.5	17.2	24.2
600 and under 700		17.4	19.3	16.4	17.8	18.2	17.1	19.9	23.9	18.0
700 and under 800		13.5	12.2	9.3	9.8	11.8	9.5	16.5	20.1	12.1
800 and under 900		10.0	11.3	13.7	11.4	8.7	13.4	7.8	13.9	11.1
900 and under 1 000		9.0	5.9	4.6	4.0	3.9	6.0	* 5.9	10.3	6.5
1 000 and under 1 100		2.9	2.8	2.1	* 1.7	* 2.0	* 2.1	* 2.4	* 2.8	2.5
1 100 and under 1 200		1.8	0.7	* 1.9	* 0.7	* 1.2	* 0.1	* 1.9	* 1.4	1.4
1 200 and under 1 300		0.6	* 0.7	* 0.6	* 0.3	* 0.8	—	* 1.4	* 0.7	0.6
1 300 and under 1 400		* 0.4	* 0.4	* 0.2	—	* 0.3	* 0.1	* 0.2	—	0.3
1 400 and under 1 500		* 0.2	* 0.1	* 0.1	* 0.2	* 0.2	—	* 0.7	* 0.2	0.2
1 500 and under 1 600		* 0.1	* 0.1	* 0.1	—	* 0.2	—	—	—	* 0.1
1 600 and under 1 700		* 0.2	* 0.1	* 0.1	* 0.1	* 0.1	—	—	—	* 0.1
1 700 and under 1 800		* 0.1	—	—	* 0.1	* 0.1	—	—	—	* 0.1
1 800 and under 1 900		* 0.1	—	—	* 0.1	—	—	—	—	—
1 900 and under 2 000		* 0.1	—	* 0.1	* 0.1	—	—	—	—	* 0.1
2 000 and over		* 0.1	* 0.1	* 0.1	—	* 0.4	—	—	* 0.2	* 0.1
<b>Total</b>		<b>100.0</b>	<b>100.0</b>	<b>100.0</b>	<b>100.0</b>	<b>100.0</b>	<b>100.0</b>	<b>100.0</b>	<b>100.0</b>	<b>100.0</b>

FEMALES										
		\$	\$	\$	\$	\$	\$	\$	\$	\$
10th percentile		440.80	441.10	440.70	454.70	427.00	419.70	457.70	508.30	441.10
20th percentile		494.60	487.50	475.30	500.10	471.50	468.40	493.90	569.20	487.10
<b>25th percentile</b>		<b>515.80</b>	<b>507.10</b>	<b>493.00</b>	<b>513.30</b>	<b>488.00</b>	<b>491.30</b>	<b>515.80</b>	<b>593.30</b>	<b>506.40</b>
30th percentile		537.80	528.30	515.80	529.40	506.20	513.20	533.90	618.10	529.30
40th percentile		583.70	568.70	557.80	547.20	541.50	547.80	578.10	654.30	569.60
<b>50th percentile (median)</b>		<b>632.70</b>	<b>618.30</b>	<b>596.80</b>	<b>583.50</b>	<b>589.30</b>	<b>581.00</b>	<b>634.90</b>	<b>697.60</b>	<b>613.90</b>
60th percentile		693.10	673.50	651.20	631.70	630.60	635.00	682.90	756.70	671.80
70th percentile		768.40	732.80	726.40	692.70	695.60	706.80	749.30	797.60	740.40
<b>75th percentile</b>		<b>808.60</b>	<b>772.00</b>	<b>779.70</b>	<b>733.50</b>	<b>735.30</b>	<b>751.50</b>	<b>772.60</b>	<b>827.20</b>	<b>781.40</b>
80th percentile		856.60	821.80	829.30	791.20	779.80	818.60	805.90	870.90	830.80
90th percentile		946.60	911.80	896.00	873.70	893.70	855.20	964.50	917.80	921.10
<b>Average earnings</b>		<b>676.60</b>	<b>656.60</b>	<b>647.90</b>	<b>633.90</b>	<b>635.20</b>	<b>623.20</b>	<b>669.40</b>	<b>716.40</b>	<b>659.00</b>



WEEKLY TOTAL EARNINGS, Distribution of Full-time Adult Non-managerial Employees *continued*

		New South Wales	Victoria	Queensland	South Australia	Western Australia	Tasmania	Northern Territory	Australian Capital Territory	Australia
PERSONS										
Weekly total earnings (\$)		%	%	%	%	%	%	%	%	%
Under 200		* 0.2	* 0.3	* 0.1	* 0.5	* 0.3	* 0.3	* 0.6	* 0.1	0.3
200 and under 300		* 0.3	* 0.2	* 0.6	* 0.3	* 0.7	* 0.3	* 0.3	* 0.7	0.4
300 and under 400		2.6	2.8	1.5	2.0	2.9	* 3.1	* 2.6	* 0.9	2.4
400 and under 500		11.7	14.9	16.6	12.3	15.3	15.8	11.3	7.6	13.8
500 and under 600		18.9	19.0	21.9	26.5	19.0	22.7	19.3	13.4	20.0
600 and under 700		16.6	17.8	16.4	17.5	15.9	18.0	16.2	20.0	17.0
700 and under 800		12.8	12.6	11.4	12.5	12.7	11.4	15.6	19.1	12.6
800 and under 900		11.9	11.3	11.8	11.2	11.0	13.2	10.0	13.1	11.6
900 and under 1 000		9.4	7.8	6.6	6.8	6.3	6.7	7.7	11.8	7.9
1 000 and under 1 100		5.3	4.6	4.4	3.5	4.9	3.6	5.5	5.7	4.8
1 100 and under 1 200		3.3	2.7	3.0	2.3	2.9	1.4	3.4	2.2	2.9
1 200 and under 1 300		2.1	2.0	1.5	1.2	1.7	* 0.7	2.6	2.1	1.8
1 300 and under 1 400		1.4	1.4	1.0	0.9	1.5	* 0.6	1.2	* 0.9	1.2
1 400 and under 1 500		0.9	0.7	0.7	* 0.9	1.0	* 0.7	* 1.1	* 1.0	0.8
1 500 and under 1 600		0.6	0.4	0.6	* 0.6	0.8	* 0.6	* 0.8	* 0.1	0.6
1 600 and under 1 700		0.5	* 0.6	0.4	* 0.3	* 0.7	* 0.3	* 0.6	* 0.4	0.5
1 700 and under 1 800		0.4	* 0.3	0.5	* 0.2	* 0.5	* 0.2	—	—	0.4
1 800 and under 1 900		0.3	* 0.2	0.3	* 0.2	* 0.5	—	* 0.1	* 0.4	0.3
1 900 and under 2 000		* 0.1	* 0.2	* 0.2	* 0.2	* 0.4	* 0.1	* 0.3	* 0.1	0.2
2 000 and over		0.7	0.3	0.6	* 0.2	1.0	* 0.3	* 0.8	* 0.5	0.5
<b>Total</b>		<b>100.0</b>	<b>100.0</b>	<b>100.0</b>	<b>100.0</b>	<b>100.0</b>	<b>100.0</b>	<b>100.0</b>	<b>100.0</b>	<b>100.0</b>
PERSONS										
		\$	\$	\$	\$	\$	\$	\$	\$	\$
10th percentile		463.00	453.90	457.10	468.30	449.40	445.20	472.40	508.50	458.70
20th percentile		525.70	506.50	502.00	517.30	501.20	500.90	526.20	587.40	513.80
<b>25th percentile</b>		<b>551.20</b>	<b>534.50</b>	<b>528.80</b>	<b>535.40</b>	<b>529.40</b>	<b>525.30</b>	<b>551.00</b>	<b>609.70</b>	<b>538.90</b>
30th percentile		578.80	558.30	550.50	549.70	548.20	540.80	575.90	636.60	563.20
40th percentile		633.90	615.20	596.50	589.30	607.80	582.70	631.50	679.80	614.90
<b>50th percentile (median)</b>		<b>696.50</b>	<b>672.80</b>	<b>653.30</b>	<b>644.40</b>	<b>674.10</b>	<b>632.80</b>	<b>694.40</b>	<b>745.80</b>	<b>675.00</b>
60th percentile		771.70	733.50	722.90	703.70	750.80	697.20	761.30	793.40	747.00
70th percentile		858.30	819.70	809.40	788.50	827.30	786.80	834.90	861.80	830.20
<b>75th percentile</b>		<b>899.90</b>	<b>865.10</b>	<b>864.40</b>	<b>842.10</b>	<b>878.40</b>	<b>832.80</b>	<b>892.80</b>	<b>900.90</b>	<b>873.90</b>
80th percentile		942.30	907.40	895.50	872.70	927.60	847.40	942.40	921.80	920.10
90th percentile		1 104.50	1 071.80	1 064.60	1 008.80	1 126.80	967.60	1 121.80	1 058.30	1 081.80
<b>Average earnings</b>		<b>759.00</b>	<b>729.00</b>	<b>725.20</b>	<b>708.50</b>	<b>750.00</b>	<b>688.70</b>	<b>758.20</b>	<b>773.00</b>	<b>739.40</b>

## AVERAGE WEEKLY EARNINGS AND HOURS, Full-time Adult Non-managerial Employees—Occupation

	ORDINARY TIME EARNINGS.....				OVERTIME EARNINGS	TOTAL EARNINGS	HOURS PAID FOR.....		
	Base pay	Payment by measured result	Overaward and over-agreement pay	Total	Total	Total	Ordinary time	Overtime	Total
	\$	\$	\$	\$	\$	\$	hours	hours	hours
MALES									
Professionals	966.70	6.40	2.50	975.60	18.40	994.10	37.9	0.5	38.4
Associate professionals	851.00	* 14.90	2.20	868.10	51.60	919.70	38.3	1.6	39.9
Tradespersons and related workers	656.40	8.10	11.70	676.20	97.10	773.30	38.3	3.3	41.6
Advanced clerical and service workers	713.00	* 4.20	* 6.40	723.50	21.30	744.80	37.3	0.8	38.1
Intermediate clerical, sales and service workers	644.60	18.70	5.40	668.70	25.50	694.20	38.4	1.0	39.3
Intermediate production and transport workers	619.90	13.50	8.40	641.80	129.40	771.20	38.4	5.1	43.5
Elementary clerical, sales and service workers	574.20	* 10.20	* 3.10	587.60	37.70	625.30	38.6	1.6	40.2
Labourers and related workers	531.00	7.30	5.70	544.00	86.40	630.40	38.0	3.7	41.7
<b>All occupations</b>	<b>705.50</b>	<b>10.80</b>	<b>6.40</b>	<b>722.80</b>	<b>69.40</b>	<b>792.20</b>	<b>38.2</b>	<b>2.6</b>	<b>40.8</b>
FEMALES									
Professionals	839.30	* 2.40	* 1.30	843.10	7.60	850.70	37.3	0.2	37.6
Associate professionals	682.10	* 1.40	* 2.60	686.10	14.60	700.70	37.6	0.5	38.1
Tradespersons and related workers	510.00	* 0.70	* 8.10	518.90	29.00	547.90	38.1	1.3	39.4
Advanced clerical and service workers	619.60	* 1.70	4.40	625.70	* 15.70	641.50	37.6	* 0.6	38.2
Intermediate clerical, sales and service workers	565.70	1.70	3.10	570.50	10.50	581.10	38.0	0.4	38.4
Intermediate production and transport workers	512.30	* 3.50	* 5.60	521.40	52.10	573.50	38.2	2.4	40.6
Elementary clerical, sales and service workers	505.50	* 2.70	* 2.20	510.50	16.00	526.50	37.8	0.7	38.5
Labourers and related workers	483.60	* 3.10	* 3.50	490.20	36.80	526.90	37.8	1.7	39.6
<b>All occupations</b>	<b>639.30</b>	<b>2.10</b>	<b>2.80</b>	<b>644.20</b>	<b>14.80</b>	<b>659.00</b>	<b>37.7</b>	<b>0.6</b>	<b>38.3</b>
PERSONS									
Professionals	903.70	4.50	1.90	910.00	13.00	923.10	37.6	0.3	38.0
Associate professionals	788.70	* 9.90	2.40	800.90	37.90	838.90	38.0	1.2	39.3
Tradespersons and related workers	648.00	7.70	11.50	667.10	93.10	760.20	38.3	3.2	41.5
Advanced clerical and service workers	634.30	* 2.10	4.70	641.10	* 16.60	657.70	37.5	* 0.7	38.2
Intermediate clerical, sales and service workers	594.20	7.90	3.90	606.00	15.90	621.90	38.1	0.6	38.7
Intermediate production and transport workers	607.30	12.30	8.10	627.70	120.30	748.00	38.4	4.8	43.1
Elementary clerical, sales and service workers	539.90	* 6.50	* 2.70	549.10	26.90	576.00	38.2	1.2	39.3
Labourers and related workers	518.70	6.20	5.10	530.10	73.60	603.60	38.0	3.2	41.1
<b>All occupations</b>	<b>679.20</b>	<b>7.40</b>	<b>5.00</b>	<b>691.60</b>	<b>47.80</b>	<b>739.40</b>	<b>38.0</b>	<b>1.8</b>	<b>39.8</b>

## AVERAGE WEEKLY EARNINGS AND HOURS, Full-time Adult Non-managerial Employees—Industry

	ORDINARY TIME EARNINGS.....				OVERTIME EARNINGS	TOTAL EARNINGS	HOURS PAID FOR.....		
	Base pay	Payment by measured result	Overaward and over-agreement pay	Total	Total	Total	Ordinary time	Overtime	Total
	\$	\$	\$	\$	\$	\$	hours	hours	hours
MALES									
Mining	1 048.20	99.30	* 8.20	1 155.60	157.40	1 313.10	40.6	5.0	45.6
Manufacturing	635.00	7.20	11.80	654.00	97.50	751.50	38.0	3.8	41.8
Electricity, gas and water supply	806.20	* 0.30	* 0.60	807.00	84.40	891.40	37.1	2.5	39.6
Construction	731.60	* 3.30	* 3.90	738.80	113.30	852.10	38.8	4.2	42.9
Wholesale trade	648.00	* 15.80	8.90	672.60	36.10	708.80	38.3	1.5	39.9
Retail trade	520.70	26.00	10.10	556.80	25.90	582.70	38.5	1.3	39.7
Accommodation, cafes and restaurants	546.40	* 0.10	* 2.00	548.50	* 20.40	568.90	39.0	* 1.1	40.0
Transport and storage	696.20	* 5.10	* 2.40	703.80	127.70	831.50	38.4	4.8	43.2
Communication services	818.00	* 0.10	—	818.00	111.40	929.40	36.7	3.2	39.9
Finance and insurance	787.00	* 29.20	* 8.20	824.40	19.00	843.40	37.9	0.6	38.5
Property and business services	782.30	* 13.20	* 6.20	801.80	40.40	842.10	39.4	1.6	41.0
Government administration and defence(a)	705.40	—	0.90	706.30	35.20	741.50	37.2	1.3	38.5
Education	856.50	* 2.80	2.70	862.10	* 5.20	867.30	36.8	* 0.2	37.0
Health and community services	779.50	* 1.80	* 3.10	784.40	48.20	832.60	38.3	1.3	39.5
Cultural and recreational services	717.40	* 6.20	* 5.40	729.00	26.20	755.10	38.2	1.0	39.1
Personal and other services(b)	761.00	* 0.60	* 1.10	762.70	90.40	853.10	38.5	2.8	41.3
<b>All industries(c)</b>	<b>705.50</b>	<b>10.80</b>	<b>6.40</b>	<b>722.80</b>	<b>69.40</b>	<b>792.20</b>	<b>38.2</b>	<b>2.6</b>	<b>40.8</b>
FEMALES									
Mining	852.70	* 4.80	* 1.40	858.90	* 19.20	878.00	40.0	* 0.7	40.7
Manufacturing	559.00	* 4.20	5.00	568.10	32.60	600.70	38.0	1.5	39.5
Electricity, gas and water supply	718.60	—	* 1.60	720.30	* 15.70	736.00	36.7	* 0.6	37.3
Construction	590.70	* 1.70	* 1.00	593.30	* 18.50	611.80	38.3	* 0.8	39.1
Wholesale trade	581.70	* 5.40	* 9.60	596.70	16.80	613.60	38.2	0.8	39.0
Retail trade	519.20	* 2.40	2.40	524.00	10.80	534.80	38.4	0.5	38.9
Accommodation, cafes and restaurants	501.60	* 0.30	* 3.80	505.70	* 9.90	515.60	39.2	* 0.5	39.7
Transport and storage	648.80	* 0.90	* 1.20	650.90	36.40	687.30	38.0	1.2	39.2
Communication services	745.30	* 0.20	* 0.20	745.70	23.90	769.60	36.8	0.8	37.6
Finance and insurance	634.10	* 0.60	3.80	638.50	11.80	650.30	37.6	0.4	38.1
Property and business services	633.50	* 2.70	* 3.00	639.20	* 13.10	652.40	38.3	* 0.6	38.8
Government administration and defence(a)	688.30	—	* 0.50	688.70	12.80	701.50	36.6	0.4	37.0
Education	769.30	* 1.00	* 0.70	771.00	* 1.40	772.40	36.5	* 0.1	36.6
Health and community services	656.90	* 1.10	* 2.80	660.90	13.30	674.20	37.8	0.4	38.3
Cultural and recreational services	657.00	* 2.10	* 5.50	664.60	* 11.00	675.60	37.9	* 0.4	38.4
Personal and other services(b)	578.30	* 8.90	* 0.20	587.50	23.00	610.40	37.9	0.9	38.8
<b>All industries(c)</b>	<b>639.30</b>	<b>2.10</b>	<b>2.80</b>	<b>644.20</b>	<b>14.80</b>	<b>659.00</b>	<b>37.7</b>	<b>0.6</b>	<b>38.3</b>

(a) Excludes permanent defence forces.

(c) Excludes Agriculture, forestry and fishing.

(b) Excludes private households employing staff.

AVERAGE WEEKLY EARNINGS AND HOURS, Full-time Adult Non-managerial Employees—Industry *continued*

	ORDINARY TIME EARNINGS.....				OVERTIME EARNINGS	TOTAL EARNINGS	HOURS PAID FOR.....		
	Base pay	Payment by measured result	Overaward and over-agreement pay	Total	Total	Total	Ordinary time	Overtime	Total
	\$	\$	\$	\$	\$	\$	hours	hours	hours
PERSONS									
Mining	1 024.30	87.80	* 7.30	1 119.40	140.60	1 260.00	40.6	4.4	45.0
Manufacturing	617.50	6.50	10.20	634.30	82.60	716.90	38.0	3.2	41.2
Electricity, gas and water supply	790.70	* 0.20	* 0.80	791.70	72.30	863.90	37.0	2.2	39.2
Construction	714.20	* 3.10	* 3.50	720.90	101.70	822.60	38.7	3.7	42.5
Wholesale trade	628.10	12.70	9.10	649.80	30.30	680.20	38.3	1.3	39.6
Retail trade	520.10	16.00	6.90	543.00	19.50	562.50	38.4	1.0	39.4
Accommodation, cafes and restaurants	526.70	* 0.20	* 2.80	529.70	* 15.80	545.50	39.1	* 0.8	39.9
Transport and storage	684.80	* 4.10	* 2.10	691.00	105.70	796.70	38.3	4.0	42.3
Communication services	797.70	* 0.10	* 0.10	797.90	87.00	884.90	36.7	2.5	39.3
Finance and insurance	696.80	* 12.30	* 5.60	714.80	14.80	729.50	37.7	0.5	38.3
Property and business services	710.70	* 8.20	* 4.70	723.50	27.30	750.80	38.9	1.1	40.0
Government administration and defence(a)	698.70	—	0.70	699.50	26.50	725.90	37.0	0.9	37.9
Education	802.80	* 1.70	1.50	806.00	2.90	808.90	36.6	0.1	36.7
Health and community services	687.70	* 1.30	* 2.90	691.90	22.10	714.00	37.9	0.6	38.6
Cultural and recreational services	690.60	* 4.40	* 5.40	700.40	19.40	719.80	38.1	0.7	38.8
Personal and other services(b)	696.60	* 3.50	* 0.80	700.90	66.60	767.60	38.3	2.2	40.4
<b>All industries(c)</b>	<b>679.20</b>	<b>7.40</b>	<b>5.00</b>	<b>691.60</b>	<b>47.80</b>	<b>739.40</b>	<b>38.0</b>	<b>1.8</b>	<b>39.8</b>

(a) Excludes permanent defence forces.

(c) Excludes Agriculture, forestry and fishing.

(b) Excludes private households employing staff.

## AVERAGE WEEKLY EARNINGS AND HOURS, Full-time Adult Non-managerial Employees—Sector

	ORDINARY TIME EARNINGS.....				OVERTIME EARNINGS	TOTAL EARNINGS	HOURS PAID FOR.....		
	<i>Base pay</i>	<i>Payment by measured result</i>	<i>Overaward and over-agreement pay</i>	<i>Total</i>	<i>Total</i>	<i>Total</i>	<i>Ordinary time</i>	<i>Overtime</i>	<i>Total</i>
	\$	\$	\$	\$	\$	\$	hours	hours	hours
MALES									
Private	675.90	14.20	8.20	698.40	73.40	771.80	38.5	2.8	41.3
Public	793.30	0.90	1.00	795.20	57.60	852.80	37.4	1.8	39.2
<b>Private and public</b>	<b>705.50</b>	<b>10.80</b>	<b>6.40</b>	<b>722.80</b>	<b>69.40</b>	<b>792.20</b>	<b>38.2</b>	<b>2.6</b>	<b>40.8</b>
FEMALES									
Private	592.70	3.00	3.90	599.60	16.60	616.20	38.1	0.7	38.8
Public	741.20	—	* 0.50	741.70	11.00	752.70	36.9	0.4	37.3
<b>Private and public</b>	<b>639.30</b>	<b>2.10</b>	<b>2.80</b>	<b>644.20</b>	<b>14.80</b>	<b>659.00</b>	<b>37.7</b>	<b>0.6</b>	<b>38.3</b>
PERSONS									
Private	644.60	10.00	6.60	661.20	52.00	713.30	38.4	2.0	40.4
Public	769.80	0.50	0.80	771.10	36.60	807.70	37.2	1.1	38.3
<b>Private and public</b>	<b>679.20</b>	<b>7.40</b>	<b>5.00</b>	<b>691.60</b>	<b>47.80</b>	<b>739.40</b>	<b>38.0</b>	<b>1.8</b>	<b>39.8</b>

## AVERAGE WEEKLY EARNINGS AND HOURS, Full-time Adult Non-managerial Employees—States &amp; Territories

	ORDINARY TIME EARNINGS.....				OVERTIME EARNINGS	TOTAL EARNINGS	HOURS PAID FOR.....		
	Base pay	Payment by measured result	Overaward and over-agreement pay	Total	Total	Total	Ordinary time	Overtime	Total
	\$	\$	\$	\$	\$	\$	hours	hours	hours
MALES									
New South Wales	723.20	11.60	7.70	742.60	72.40	815.00	37.8	2.6	40.4
Victoria	696.80	* 9.60	5.40	711.80	64.10	775.90	38.3	2.4	40.7
Queensland	680.30	13.60	7.70	701.60	74.50	776.10	38.4	2.8	41.2
South Australia	683.10	* 11.20	5.00	699.30	56.90	756.20	38.2	2.2	40.5
Western Australia	727.30	* 9.60	5.60	742.40	79.90	822.30	39.0	3.0	42.1
Tasmania	662.30	6.20	* 3.70	672.30	51.40	723.70	38.4	2.1	40.5
Northern Territory	710.90	* 5.20	* 2.90	719.00	* 102.20	821.20	38.3	3.5	41.9
Australian Capital Territory	764.90	* 4.80	* 2.60	772.40	42.60	815.00	37.3	1.7	39.0
<b>Australia</b>	<b>705.50</b>	<b>10.80</b>	<b>6.40</b>	<b>722.80</b>	<b>69.40</b>	<b>792.20</b>	<b>38.2</b>	<b>2.6</b>	<b>40.8</b>
FEMALES									
New South Wales	655.30	1.90	3.80	661.00	15.60	676.60	37.3	0.6	37.9
Victoria	637.10	* 2.20	2.50	641.80	14.70	656.60	38.0	0.6	38.6
Queensland	629.30	* 1.70	2.20	633.20	14.80	647.90	38.0	0.6	38.6
South Australia	613.20	* 2.70	* 1.80	617.70	16.20	633.90	37.8	0.7	38.5
Western Australia	614.60	* 2.90	* 3.30	620.80	14.40	635.20	38.4	0.6	39.0
Tasmania	614.60	* 1.00	* 1.10	616.70	6.50	623.20	37.2	0.3	37.5
Northern Territory	655.60	* 0.60	* 0.90	657.20	12.20	669.40	37.7	0.6	38.2
Australian Capital Territory	703.40	* 3.30	* 0.30	707.00	9.50	716.40	37.0	0.3	37.3
<b>Australia</b>	<b>639.30</b>	<b>2.10</b>	<b>2.80</b>	<b>644.20</b>	<b>14.80</b>	<b>659.00</b>	<b>37.7</b>	<b>0.6</b>	<b>38.3</b>
PERSONS									
New South Wales	695.80	7.70	6.10	709.60	49.40	759.00	37.6	1.8	39.4
Victoria	673.30	6.70	4.30	684.30	44.70	729.00	38.2	1.7	39.9
Queensland	660.00	8.90	5.50	674.40	50.70	725.20	38.3	1.9	40.2
South Australia	655.80	* 7.90	3.80	667.50	41.00	708.50	38.1	1.6	39.7
Western Australia	683.70	7.00	4.70	695.40	54.60	750.00	38.8	2.1	40.9
Tasmania	645.70	4.40	* 2.80	652.90	35.80	688.70	38.0	1.4	39.4
Northern Territory	687.90	* 3.30	* 2.10	693.30	* 64.80	758.20	38.0	2.3	40.3
Australian Capital Territory	738.70	* 4.20	* 1.60	744.50	28.50	773.00	37.2	1.1	38.3
<b>Australia</b>	<b>679.20</b>	<b>7.40</b>	<b>5.00</b>	<b>691.60</b>	<b>47.80</b>	<b>739.40</b>	<b>38.0</b>	<b>1.8</b>	<b>39.8</b>

## EARNINGS AND HOURS, Full-time Adult Non-managerial Employees—Occupation

	MALES.....		FEMALES.....		PERSONS.....	
	<i>Earnings</i>		<i>Earnings</i>		<i>Earnings</i>	
	\$	hours	\$	hours	\$	hours
AVERAGE WEEKLY ORDINARY TIME						
<b>2 Professionals</b>	975.60	37.9	843.10	37.3	910.00	37.6
21 Science, building and engineering professionals	1 017.20	38.6	849.90	37.8	985.70	38.4
211 Natural and physical science professionals	1 002.40	38.7	828.50	37.7	942.80	38.4
212 Building and engineering professionals	1 023.50	38.5	893.90	37.8	1 010.90	38.4
22 Business and information professionals	984.00	38.4	844.20	38.1	933.10	38.3
221 Accountants, auditors and corporate treasurers	892.10	38.6	790.80	38.0	853.30	38.3
222 Sales, marketing and advertising professionals	962.80	39.1	869.50	38.9	927.40	39.0
223 Computing professionals	1 076.20	38.1	910.60	37.7	1 043.10	38.1
229 Miscellaneous business and information professionals	951.00	37.7	821.60	37.4	885.70	37.6
23 Health professionals	1 107.40	38.3	890.60	38.1	945.00	38.1
231 Medical practitioners	1 410.40	39.1	1 107.40	38.4	1 301.90	38.9
232 Nursing professionals	878.70	38.0	844.10	37.8	848.20	37.9
238 Miscellaneous health professionals	927.90	37.6	960.60	38.7	950.20	38.4
24 Education professionals	928.20	36.9	832.00	36.6	869.20	36.7
241 School teachers	871.10	36.8	821.10	36.6	837.50	36.6
242 University and vocational education teachers	1 095.90	36.7	987.50	36.0	1 062.50	36.5
249 Miscellaneous education professionals	836.40	38.4	794.20	37.2	812.40	37.7
25 Social, arts and miscellaneous professionals	918.00	37.6	783.80	37.3	857.20	37.5
251 Social welfare professionals	799.50	38.1	745.40	37.3	766.70	37.6
252 Miscellaneous social professionals	1 021.70	37.1	831.30	36.9	924.30	37.0
253 Artists and related professionals	909.10	37.4	800.50	37.5	863.70	37.4
254 Miscellaneous professionals	959.60	37.7	802.50	37.4	925.10	37.6
AVERAGE WEEKLY TOTAL						
<b>2 Professionals</b>	994.10	38.4	850.70	37.6	923.00	38.0
21 Science, building and engineering professionals	1 042.70	39.3	864.30	38.2	1 009.20	39.1
211 Natural and physical science professionals	1 011.10	39.0	844.80	38.2	954.10	38.7
212 Building and engineering professionals	1 056.20	39.4	904.60	38.2	1 041.40	39.3
22 Business and information professionals	993.50	38.7	850.60	38.2	941.50	38.5
221 Accountants, auditors and corporate treasurers	897.50	38.7	798.90	38.2	859.70	38.5
222 Sales, marketing and advertising professionals	964.60	39.1	872.40	38.9	929.60	39.1
223 Computing professionals	1 093.70	38.6	919.90	37.9	1 059.00	38.5
229 Miscellaneous business and information professionals	964.20	38.0	829.60	37.6	896.20	37.8
23 Health professionals	1 231.10	41.2	914.30	38.7	993.80	39.3
231 Medical practitioners	1 691.10	45.5	1 283.50	42.6	1 545.10	44.5
232 Nursing professionals	897.90	38.6	853.60	38.1	858.80	38.2
238 Miscellaneous health professionals	946.40	38.1	977.90	39.1	967.80	38.8
24 Education professionals	930.40	36.9	832.00	36.6	870.10	36.7
241 School teachers	871.10	36.8	821.10	36.6	837.50	36.6
242 University and vocational education teachers	1 103.40	36.9	987.70	36.0	1 067.70	36.6
249 Miscellaneous education professionals	839.60	38.5	794.50	37.2	813.90	37.7
25 Social, arts and miscellaneous professionals	929.20	37.9	788.60	37.5	865.50	37.7
251 Social welfare professionals	803.10	38.2	747.70	37.4	769.60	37.7
252 Miscellaneous social professionals	1 031.40	37.4	832.30	36.9	929.60	37.2
253 Artists and related professionals	921.80	37.8	813.20	37.9	876.40	37.9
254 Miscellaneous professionals	975.80	38.1	805.80	37.6	938.50	38.0

EARNINGS AND HOURS, Full-time Adult Non-managerial Employees—Occupation *continued*

	MALES.....		FEMALES.....		PERSONS.....	
	<i>Earnings</i>		<i>Earnings</i>		<i>Earnings</i>	
	\$	hours	\$	hours	\$	hours
AVERAGE WEEKLY ORDINARY TIME						
<b>3 Associate professionals</b>	868.10	38.3	686.10	37.6	800.90	38.0
31 Science, engineering and related associate professionals	890.00	38.3	664.20	37.8	845.10	38.2
311 Medical and science technical officers	783.50	37.6	639.40	37.9	703.50	37.8
312 Building and engineering associate professionals	909.90	38.5	756.90	37.3	900.90	38.4
32 Business and administration associate professionals	914.10	38.0	712.10	37.5	812.60	37.7
321 Finance associate professionals	1 107.40	37.7	785.20	37.8	993.80	37.8
329 Miscellaneous business and administration associate professionals	873.30	38.1	704.50	37.4	784.60	37.7
33 Managing supervisors (sales and service)	685.90	38.4	627.30	38.0	667.00	38.3
331 Shop managers	* 590.10	* 39.1	* 553.50	* 38.2	569.00	38.6
332 Hospitality and accommodation managers	643.50	38.8	609.30	38.0	633.30	38.6
339 Miscellaneous managing supervisors (sales and service)	831.30	37.2	* 775.50	* 37.8	816.90	37.3
34 Health and welfare associate professionals	714.20	38.7	613.10	37.8	641.70	38.1
341 Enrolled nurses	* 596.10	* 38.2	587.00	38.2	587.70	38.2
342 Welfare associate professionals	697.10	38.9	651.70	36.9	667.90	37.6
349 Miscellaneous health and welfare associate professionals	759.10	38.6	* 633.80	* 38.0	703.50	38.4
39 Other associate professionals	865.10	38.5	752.10	37.5	846.10	38.4
391 Police officers	885.30	38.5	812.10	38.5	877.10	38.5
399 Miscellaneous associate professionals	829.30	38.6	712.10	36.9	799.90	38.2
AVERAGE WEEKLY TOTAL						
<b>3 Associate professionals</b>	919.70	39.9	700.70	38.1	838.90	39.3
31 Science, engineering and related associate professionals	958.10	40.5	690.00	38.7	904.80	40.1
311 Medical and science technical officers	824.10	39.3	665.10	38.8	735.80	39.0
312 Building and engineering associate professionals	983.10	40.7	783.40	38.3	971.50	40.5
32 Business and administration associate professionals	932.80	38.6	724.90	37.9	828.30	38.3
321 Finance associate professionals	1 117.00	38.0	788.40	38.0	1 001.10	38.0
329 Miscellaneous business and administration associate professionals	894.00	38.7	718.30	37.9	801.70	38.3
33 Managing supervisors (sales and service)	738.30	40.9	636.10	38.4	705.20	40.1
331 Shop managers	* 619.60	* 40.7	* 572.40	* 38.8	592.40	39.6
332 Hospitality and accommodation managers	700.20	41.6	616.80	38.4	675.40	40.7
339 Miscellaneous managing supervisors (sales and service)	878.80	39.0	* 776.30	* 37.9	852.20	38.7
34 Health and welfare associate professionals	754.50	40.0	622.60	38.2	660.00	38.7
341 Enrolled nurses	* 624.40	* 39.3	597.00	38.7	599.10	38.7
342 Welfare associate professionals	705.30	39.2	656.90	37.0	674.20	37.8
349 Miscellaneous health and welfare associate professionals	831.10	40.9	* 650.50	* 38.7	751.00	39.9
39 Other associate professionals	941.30	40.6	773.90	38.4	913.20	40.2
391 Police officers	983.70	41.2	840.40	39.4	967.70	41.0
399 Miscellaneous associate professionals	866.10	39.6	729.40	37.7	831.80	39.1



	MALES.....		FEMALES.....		PERSONS.....	
	<i>Earnings</i>		<i>Earnings</i>		<i>Earnings</i>	
	\$	hours	\$	hours	\$	hours
AVERAGE WEEKLY ORDINARY TIME						
<b>4 Tradespersons and related workers</b>	676.20	38.3	518.90	38.1	667.10	38.3
41 Mechanical and fabrication engineering tradespersons	710.70	38.3	* 598.80	* 39.2	710.20	38.3
411 Mechanical engineering tradespersons	755.30	38.4	* 598.80	* 39.2	754.30	38.4
412 Fabrication engineering tradespersons	608.30	38.0	—	—	608.30	38.0
42 Automotive tradespersons	566.60	38.0	* 425.90	* 34.5	565.50	37.9
421 Automotive tradespersons	566.60	38.0	* 425.90	* 34.5	565.50	37.9
43 Electrical and electronics tradespersons	734.30	38.2	* 632.10	* 35.2	733.30	38.2
431 Electrical and electronics tradespersons	734.30	38.2	* 632.10	* 35.2	733.30	38.2
44 Construction tradespersons	679.00	38.4	* 410.10	* 35.3	674.50	38.4
441 Structural construction tradespersons	695.30	38.8	* 377.20	* 34.5	692.40	38.8
442 Final finishes construction tradespersons	622.70	37.2	* 423.10	* 35.8	605.70	37.1
443 Plumbers	666.90	38.1	n.p.	n.p.	666.90	38.1
45 Food tradespersons	576.10	38.7	520.30	38.5	560.90	38.7
451 Food tradespersons	576.10	38.7	520.30	38.5	560.90	38.7
46 Skilled agricultural and horticultural workers	528.40	38.5	* 478.60	* 38.3	526.20	38.5
461 Skilled agricultural workers	* 532.00	* 39.3	n.p.	n.p.	* 533.30	* 39.3
462 Horticultural tradespersons	528.20	38.4	* 476.30	* 38.3	525.80	38.4
49 Other tradespersons and related workers	692.50	38.2	520.30	38.3	657.40	38.2
491 Printing tradespersons	651.90	37.3	* 567.80	* 37.7	638.80	37.4
492 Wood tradespersons	529.20	37.9	* 484.00	* 38.0	527.00	37.9
493 Hairdressers	* 451.20	* 38.5	481.90	38.6	478.70	38.6
494 Textile, clothing and related tradespersons	489.00	37.2	* 546.80	* 38.1	507.70	37.5
498 Miscellaneous tradespersons and related workers	800.90	38.9	* 596.80	* 38.3	789.80	38.9
AVERAGE WEEKLY TOTAL						
<b>4 Tradespersons and related workers</b>	773.30	41.6	547.90	39.4	760.20	41.5
41 Mechanical and fabrication engineering tradespersons	839.20	42.7	* 636.20	* 41.0	838.30	42.7
411 Mechanical engineering tradespersons	890.70	42.9	* 636.20	* 41.0	889.10	42.9
412 Fabrication engineering tradespersons	720.60	42.2	—	—	720.60	42.2
42 Automotive tradespersons	625.80	40.4	* 482.70	* 36.9	624.70	40.4
421 Automotive tradespersons	625.80	40.4	* 482.70	* 36.9	624.70	40.4
43 Electrical and electronics tradespersons	853.80	41.8	* 708.70	* 37.2	852.40	41.8
431 Electrical and electronics tradespersons	853.80	41.8	* 708.70	* 37.2	852.40	41.8
44 Construction tradespersons	748.90	41.0	* 478.00	* 39.0	744.40	41.0
441 Structural construction tradespersons	752.70	41.1	* 457.50	* 38.0	750.00	41.1
442 Final finishes construction tradespersons	708.60	40.4	* 485.60	* 39.5	689.70	40.3
443 Plumbers	758.40	41.2	n.p.	n.p.	758.40	41.2
45 Food tradespersons	617.60	40.8	555.20	40.2	600.60	40.6
451 Food tradespersons	617.60	40.8	555.20	40.2	600.60	40.6
46 Skilled agricultural and horticultural workers	547.00	39.3	* 498.00	* 39.4	544.90	39.3
461 Skilled agricultural workers	* 532.00	* 39.3	n.p.	n.p.	* 537.90	* 39.4
462 Horticultural tradespersons	548.00	39.3	* 489.70	* 39.2	545.30	39.3
49 Other tradespersons and related workers	796.50	41.8	538.90	39.1	744.00	41.2
491 Printing tradespersons	735.60	40.2	* 573.20	* 37.8	710.40	39.8
492 Wood tradespersons	610.10	41.8	* 544.50	* 40.8	606.90	41.7
493 Hairdressers	* 469.20	* 39.4	499.60	39.3	496.30	39.3
494 Textile, clothing and related tradespersons	517.80	38.6	* 573.80	* 39.5	535.90	38.9
498 Miscellaneous tradespersons and related workers	936.70	43.2	* 619.70	* 39.2	919.60	43.0

	MALES.....		FEMALES.....		PERSONS.....	
	<i>Earnings</i>		<i>Earnings</i>		<i>Earnings</i>	
	\$	hours	\$	hours	\$	hours
AVERAGE WEEKLY ORDINARY TIME						
<b>5 Advanced clerical and service workers</b>	723.50	37.3	625.70	37.6	641.10	37.5
51 Secretaries and personal assistants	* 653.10	* 38.0	613.40	37.8	614.00	37.8
511 Secretaries and personal assistants	* 653.10	* 38.0	613.40	37.8	614.00	37.8
59 Other advanced clerical and service workers	727.80	37.3	653.80	37.2	680.90	37.2
591 Advanced numerical clerks	689.00	38.3	617.00	38.0	638.90	38.1
599 Miscellaneous advanced clerical and service workers	753.80	36.6	695.20	36.4	720.00	36.5
<b>6 Intermediate clerical, sales and service workers</b>	668.70	38.4	570.50	38.0	605.90	38.1
61 Intermediate clerical workers	662.60	38.1	579.40	37.9	605.70	37.9
611 General clerks	625.60	37.3	582.10	37.7	592.10	37.6
612 Keyboard operators	617.00	37.4	546.30	37.4	557.90	37.4
613 Receptionists	* 560.70	* 39.8	526.10	38.7	527.90	38.8
614 Intermediate numerical clerks	667.10	38.8	591.60	37.8	616.10	38.1
615 Material recording and despatching clerks	671.70	38.4	595.80	38.1	646.00	38.3
619 Miscellaneous intermediate clerical workers	698.90	37.5	609.10	37.7	642.20	37.6
62 Intermediate sales and clerical workers	705.10	38.7	641.80	39.1	687.20	38.8
621 Intermediate sales and clerical workers	705.10	38.7	641.80	39.1	687.20	38.8
63 Intermediate service workers	631.30	39.0	514.10	38.0	548.30	38.3
631 Carers and aides	585.60	38.6	502.20	36.9	516.70	37.2
632 Hospitality workers	550.60	39.2	497.00	39.1	521.80	39.1
639 Miscellaneous intermediate service workers	715.10	39.0	535.70	38.8	593.60	38.9
AVERAGE WEEKLY TOTAL						
<b>5 Advanced clerical and service workers</b>	744.80	38.1	641.50	38.2	657.70	38.2
51 Secretaries and personal assistants	* 654.00	* 38.0	628.50	38.3	628.90	38.3
511 Secretaries and personal assistants	* 654.00	* 38.0	628.50	38.3	628.90	38.3
59 Other advanced clerical and service workers	750.30	38.1	670.90	37.9	700.00	38.0
591 Advanced numerical clerks	707.40	39.0	625.70	38.3	650.60	38.5
599 Miscellaneous advanced clerical and service workers	779.00	37.6	721.70	37.4	745.90	37.5
<b>6 Intermediate clerical, sales and service workers</b>	694.20	39.3	581.10	38.4	621.90	38.7
61 Intermediate clerical workers	693.80	39.2	591.30	38.4	623.70	38.6
611 General clerks	641.00	37.9	590.00	38.1	601.70	38.0
612 Keyboard operators	654.00	38.9	570.50	38.3	584.20	38.4
613 Receptionists	* 574.00	* 40.4	533.20	39.0	535.20	39.1
614 Intermediate numerical clerks	685.20	39.4	604.70	38.3	630.80	38.7
615 Material recording and despatching clerks	719.70	40.3	618.50	38.9	685.40	39.9
619 Miscellaneous intermediate clerical workers	738.80	38.8	622.50	38.3	665.40	38.4
62 Intermediate sales and clerical workers	717.60	39.3	648.30	39.4	698.00	39.3
621 Intermediate sales and clerical workers	717.60	39.3	648.30	39.4	698.00	39.3
63 Intermediate service workers	654.40	39.9	520.10	38.3	559.30	38.7
631 Carers and aides	592.20	38.8	507.50	37.2	522.20	37.5
632 Hospitality workers	567.90	40.0	502.30	39.3	532.60	39.6
639 Miscellaneous intermediate service workers	751.40	40.4	542.90	39.1	610.20	39.5

	MALES.....		FEMALES.....		PERSONS.....	
	<i>Earnings</i>		<i>Earnings</i>		<i>Earnings</i>	
	\$	hours	\$	hours	\$	hours
AVERAGE WEEKLY ORDINARY TIME						
<b>7 Intermediate production and transport workers</b>	641.80	38.4	521.40	38.2	627.70	38.4
71 Intermediate plant operators	667.00	38.4	602.60	37.8	664.00	38.4
711 Mobile plant operators	637.30	38.6	* 684.10	* 37.8	638.60	38.6
712 Intermediate stationary plant operators	691.00	38.3	571.10	37.8	683.90	38.3
72 Intermediate machine operators	588.90	37.8	496.60	38.4	560.00	38.0
721 Intermediate textile, clothing and related machine operators	589.80	38.8	473.60	38.3	525.20	38.5
729 Miscellaneous intermediate machine operators	588.60	37.5	529.50	38.4	577.20	37.7
73 Road and rail transport drivers	592.10	38.6	542.00	38.6	590.50	38.6
731 Road and rail transport drivers	592.10	38.6	542.00	38.6	590.50	38.6
79 Other intermediate production and transport workers	697.10	38.4	521.30	38.1	668.30	38.3
791 Intermediate mining and construction workers	1 065.20	39.6	1 106.40	* 42.1	1 066.00	39.7
799 Miscellaneous intermediate production and transport workers	575.60	38.0	507.30	38.0	561.80	38.0
<b>8 Elementary clerical, sales and service workers</b>	587.60	38.6	510.50	37.8	549.10	38.2
81 Elementary clerks	616.30	36.7	567.70	37.0	593.20	36.9
811 Elementary clerks	616.30	36.7	567.70	37.0	593.20	36.9
82 Elementary sales workers	565.00	38.4	499.50	37.9	526.80	38.1
821 Sales assistants	553.70	38.4	485.40	37.9	512.70	38.1
829 Miscellaneous elementary sales workers	596.20	38.3	551.10	38.2	572.20	38.3
83 Elementary service workers	612.60	39.9	507.20	38.0	587.80	39.5
831 Elementary service workers	612.60	39.9	507.20	38.0	587.80	39.5
AVERAGE WEEKLY TOTAL						
<b>7 Intermediate production and transport workers</b>	771.20	43.5	573.50	40.6	748.00	43.1
71 Intermediate plant operators	821.90	44.1	709.20	42.1	816.70	44.0
711 Mobile plant operators	809.70	45.1	* 913.60	* 46.9	812.80	45.1
712 Intermediate stationary plant operators	831.70	43.4	630.40	40.2	819.80	43.2
72 Intermediate machine operators	691.60	41.9	538.70	40.4	643.70	41.4
721 Intermediate textile, clothing and related machine operators	655.40	41.7	498.50	39.6	568.20	40.6
729 Miscellaneous intermediate machine operators	701.50	42.0	596.20	41.5	681.20	41.9
73 Road and rail transport drivers	736.70	44.8	611.40	41.8	732.70	44.7
731 Road and rail transport drivers	736.70	44.8	611.40	41.8	732.70	44.7
79 Other intermediate production and transport workers	787.20	41.9	564.00	40.1	750.70	41.6
791 Intermediate mining and construction workers	1 227.30	45.2	1 274.70	* 48.0	1 228.20	45.2
799 Miscellaneous intermediate production and transport workers	642.00	40.8	547.00	39.9	622.80	40.6
<b>8 Elementary clerical, sales and service workers</b>	625.30	40.2	526.50	38.5	576.00	39.3
81 Elementary clerks	671.00	39.0	588.40	37.8	631.70	38.5
811 Elementary clerks	671.00	39.0	588.40	37.8	631.70	38.5
82 Elementary sales workers	585.90	39.3	512.20	38.5	542.90	38.8
821 Sales assistants	565.50	39.0	494.80	38.3	523.10	38.6
829 Miscellaneous elementary sales workers	642.50	40.1	575.90	39.1	607.00	39.6
83 Elementary service workers	671.40	42.4	542.90	39.7	641.20	41.8
831 Elementary service workers	671.40	42.4	542.90	39.7	641.20	41.8

	MALES.....		FEMALES.....		PERSONS.....	
	<i>Earnings</i>		<i>Earnings</i>		<i>Earnings</i>	
	\$	hours	\$	hours	\$	hours
AVERAGE WEEKLY ORDINARY TIME						
<b>9 Labourers and related workers</b>	544.00	38.0	490.20	37.8	530.10	38.0
91 Cleaners	513.10	38.2	484.80	38.5	503.00	38.3
911 Cleaners	513.10	38.2	484.80	38.5	503.00	38.3
92 Factory labourers	538.50	37.7	482.40	37.7	520.50	37.7
921 Process workers	538.90	37.7	482.30	37.6	524.30	37.6
922 Product packagers	536.30	38.1	482.60	37.9	508.20	38.0
99 Other labourers and related workers	556.10	38.3	512.70	37.7	549.30	38.2
991 Mining, construction and related workers	604.40	37.8	* 579.60	* 37.7	603.50	37.8
992 Agricultural and horticultural labourers	479.90	37.7	* 457.70	* 36.1	476.70	37.4
993 Elementary food preparation and related workers	482.40	38.8	518.00	37.9	502.30	38.3
999 Miscellaneous labourers and related workers	543.90	38.7	* 456.40	* 37.7	540.50	38.7
AVERAGE WEEKLY TOTAL						
<b>9 Labourers and related workers</b>	630.40	41.7	526.90	39.6	603.60	41.1
91 Cleaners	569.00	40.8	501.20	39.3	544.90	40.2
911 Cleaners	569.00	40.8	501.20	39.3	544.90	40.2
92 Factory labourers	631.50	41.7	527.20	39.9	598.00	41.1
921 Process workers	628.30	41.6	528.70	39.8	602.60	41.1
922 Product packagers	647.30	42.5	524.80	40.0	583.10	41.2
99 Other labourers and related workers	642.90	41.8	543.10	39.0	627.20	41.4
991 Mining, construction and related workers	731.50	42.9	* 708.10	* 42.9	730.70	42.9
992 Agricultural and horticultural labourers	517.50	39.4	* 477.80	* 37.0	511.60	39.1
993 Elementary food preparation and related workers	506.10	39.9	539.90	38.8	525.00	39.3
999 Miscellaneous labourers and related workers	617.90	41.8	* 478.60	* 38.5	612.50	41.7

## OVERTIME, Full-time Adult Non-managerial Employees by Sector—Occupation

	AVERAGE WEEKLY OVERTIME EARNINGS(a).....			AVERAGE WEEKLY OVERTIME HOURS PAID FOR(a)			PERCENTAGE OF EMPLOYEES PAID OVERTIME
	<i>Males</i>	<i>Females</i>	<i>Persons</i>	<i>Males</i>	<i>Females</i>	<i>Persons</i>	<i>Persons</i>
	\$	\$	\$	hours	hours	hours	%
PRIVATE							
Professionals	211.40	167.30	194.80	6.0	4.9	5.6	4.4
Associate professionals	244.00	118.30	205.30	9.0	4.7	7.7	16.2
Tradespersons and related workers	227.70	87.40	221.00	8.1	4.2	7.9	40.7
Advanced clerical and service workers	117.90	* 138.00	133.90	4.4	* 5.5	5.3	12.8
Intermediate clerical, sales and service workers	147.80	87.80	112.60	6.1	3.9	4.8	13.1
Intermediate production and transport workers	259.80	140.40	248.40	10.3	6.4	10.0	49.6
Elementary clerical, sales and service workers	122.50	83.30	104.10	5.6	3.8	4.7	19.9
Labourers and related workers	203.10	110.00	181.90	8.6	5.2	7.8	42.4
<b>All occupations</b>	<b>224.90</b>	<b>109.70</b>	<b>199.80</b>	<b>8.7</b>	<b>4.7</b>	<b>7.8</b>	<b>26.0</b>
PUBLIC							
Professionals	356.10	199.30	293.90	8.4	5.2	7.1	6.0
Associate professionals	229.50	137.10	213.70	6.2	4.4	5.9	20.3
Tradespersons and related workers	241.00	* 171.20	239.50	6.9	5.1	6.9	46.7
Advanced clerical and service workers	* 161.70	173.90	169.00	* 7.1	6.5	6.7	* 7.8
Intermediate clerical, sales and service workers	181.60	114.10	150.40	6.0	4.2	5.1	12.7
Intermediate production and transport workers	177.30	* 134.60	176.10	6.6	* 5.1	6.5	56.2
Elementary clerical, sales and service workers	133.90	94.70	124.90	5.3	3.9	5.0	40.3
Labourers and related workers	157.70	98.70	153.50	6.4	4.6	6.3	32.9
<b>All occupations</b>	<b>211.90</b>	<b>139.00</b>	<b>197.90</b>	<b>6.5</b>	<b>4.5</b>	<b>6.1</b>	<b>18.5</b>
PRIVATE AND PUBLIC							
Professionals	293.20	186.10	251.60	7.4	5.1	6.5	5.2
Associate professionals	235.80	125.40	209.60	7.4	4.6	6.7	18.1
Tradespersons and related workers	229.80	93.90	224.00	7.9	4.3	7.7	41.6
Advanced clerical and service workers	124.60	* 140.40	136.90	4.8	5.6	5.4	12.1
Intermediate clerical, sales and service workers	158.40	93.50	122.40	6.1	3.9	4.9	13.0
Intermediate production and transport workers	248.20	140.20	238.80	9.8	6.3	9.5	50.4
Elementary clerical, sales and service workers	127.50	85.70	111.30	5.4	3.8	4.8	24.2
Labourers and related workers	197.30	109.60	178.80	8.3	5.2	7.7	41.1
<b>All occupations</b>	<b>222.10</b>	<b>115.30</b>	<b>199.40</b>	<b>8.2</b>	<b>4.7</b>	<b>7.5</b>	<b>24.0</b>

(a) For those employees who received overtime pay.

## OVERTIME, Full-time Adult Non-managerial Employees by Sector—Industry

	AVERAGE WEEKLY OVERTIME EARNINGS(a).....			AVERAGE WEEKLY OVERTIME HOURS PAID FOR(a)			PERCENTAGE OF EMPLOYEES PAID OVERTIME
	<i>Males</i>	<i>Females</i>	<i>Persons</i>	<i>Males</i>	<i>Females</i>	<i>Persons</i>	<i>Persons</i>
	\$	\$	\$	hours	hours	hours	%
PRIVATE							
Mining	421.90	* 465.70	422.60	13.3	* 15.8	13.4	33.0
Manufacturing	216.80	113.10	200.20	8.4	5.1	7.9	41.4
Electricity, gas and water supply	251.90	* 161.00	248.00	7.4	* 6.9	7.4	26.7
Construction	305.50	* 194.60	301.40	11.3	* 8.6	11.2	34.7
Wholesale trade	165.40	105.90	151.20	7.0	4.8	6.5	20.1
Retail trade	106.60	69.00	94.50	5.3	3.5	4.7	20.7
Accommodation, cafes and restaurants	118.00	86.40	107.20	6.2	4.8	5.7	14.8
Transport and storage	292.80	147.00	268.90	11.2	4.8	10.2	40.7
Communication services	* 232.30	* 126.90	205.40	6.5	* 4.4	6.0	13.0
Finance and insurance	151.40	98.60	120.20	5.1	3.7	4.3	12.2
Property and business services	195.30	132.20	175.60	7.9	5.7	7.2	16.0
Education	* 80.10	* 126.20	* 99.20	* 5.8	* 6.9	6.2	* 3.1
Health and community services	107.40	89.50	92.20	4.5	3.6	3.7	* 10.6
Cultural and recreational services	155.00	135.40	148.90	6.1	5.5	6.0	10.7
Personal and other services(b)	209.70	105.80	169.50	8.2	4.4	6.7	29.9
<b>All industries(c)</b>	<b>224.90</b>	<b>109.70</b>	<b>199.80</b>	<b>8.7</b>	<b>4.7</b>	<b>7.8</b>	<b>26.0</b>
PUBLIC							
Mining	260.70	—	260.70	7.0	—	7.0	71.4
Manufacturing	138.00	* 120.20	135.10	5.4	* 4.6	5.3	39.0
Electricity, gas and water supply	259.30	98.10	243.10	7.8	3.5	7.4	30.2
Construction	251.60	—	251.60	8.3	—	8.3	27.5
Wholesale trade	90.70	26.10	87.90	3.6	1.0	3.5	* 25.4
Transport and storage	204.00	175.20	202.10	7.3	7.2	7.3	46.6
Communication services	216.30	109.60	201.80	6.2	3.6	5.8	47.1
Finance and insurance	183.40	76.40	* 142.70	4.1	2.8	3.6	* 12.9
Property and business services	240.00	* 149.50	224.40	9.0	* 6.2	8.5	4.8
Government administration and defence(d)	149.30	123.60	143.70	5.4	4.2	5.1	18.4
Education	222.70	121.50	185.90	6.7	4.2	5.8	1.5
Health and community services	292.50	167.00	230.90	7.3	4.8	6.1	14.2
Cultural and recreational services	162.40	* 112.80	149.40	5.3	* 4.0	4.9	19.6
Personal and other services(b)	246.70	151.70	238.20	6.9	5.4	6.8	33.7
<b>All industries(c)</b>	<b>211.90</b>	<b>139.00</b>	<b>197.90</b>	<b>6.5</b>	<b>4.5</b>	<b>6.1</b>	<b>18.5</b>

(a) For those employees who received overtime pay.

(c) Excludes Agriculture, forestry and fishing.

(b) Excludes private households employing staff.

(d) Excludes permanent defence forces.

OVERTIME, Full-time Adult Non-managerial Employees by Sector—Industry *continued*

	AVERAGE WEEKLY OVERTIME EARNINGS(a).....			AVERAGE WEEKLY OVERTIME HOURS PAID FOR(a)			PERCENTAGE OF EMPLOYEES PAID OVERTIME
	<i>Males</i>	<i>Females</i>	<i>Persons</i>	<i>Males</i>	<i>Females</i>	<i>Persons</i>	<i>Persons</i>
	\$	\$	\$	hours	hours	hours	%
PRIVATE AND PUBLIC							
Mining	414.00	* 465.70	414.80	13.0	* 15.8	13.1	33.9
Manufacturing	216.40	113.10	199.80	8.4	5.1	7.9	41.3
Electricity, gas and water supply	258.10	102.50	243.90	7.7	3.7	7.4	29.6
Construction	301.80	* 194.60	298.10	11.1	* 8.6	11.0	34.1
Wholesale trade	164.80	105.80	150.80	7.0	4.8	6.4	20.1
Retail trade	106.60	69.00	94.50	5.3	3.5	4.7	20.6
Accommodation, cafes and restaurants	118.00	86.40	107.20	6.2	4.8	5.7	14.7
Transport and storage	267.50	150.70	251.30	10.1	5.1	9.4	42.1
Communication services	216.80	110.80	202.00	6.2	3.7	5.8	43.1
Finance and insurance	153.20	98.10	121.10	5.1	3.7	4.3	12.2
Property and business services	196.00	132.30	176.30	7.9	5.7	7.2	15.5
Government administration and defence(b)	149.30	123.60	143.70	5.4	4.2	5.1	18.4
Education	* 171.80	123.40	153.30	6.4	5.3	6.0	1.9
Health and community services	262.40	126.00	176.20	6.8	4.2	5.2	12.5
Cultural and recreational services	158.00	127.60	149.10	5.8	5.0	5.6	13.0
Personal and other services(c)	234.30	116.70	208.80	7.4	4.7	6.8	31.9
<b>All industries(d)</b>	<b>222.10</b>	<b>115.30</b>	<b>199.40</b>	<b>8.2</b>	<b>4.7</b>	<b>7.5</b>	<b>24.0</b>

(a) For those employees who received overtime pay.

(c) Excludes private households employing staff.

(b) Excludes permanent defence forces.

(d) Excludes Agriculture, forestry and fishing.

## OVERTIME(a), Full-time Adult Non-managerial Employees—States &amp; Territories

	AVERAGE WEEKLY OVERTIME EARNINGS(a).....			AVERAGE WEEKLY OVERTIME HOURS PAID FOR(a)			PERCENTAGE OF EMPLOYEES PAID OVERTIME
	<i>Males</i>	<i>Females</i>	<i>Persons</i>	<i>Males</i>	<i>Females</i>	<i>Persons</i>	<i>Persons</i>
	\$	\$	\$	hours	hours	hours	%
PRIVATE							
New South Wales	230.80	117.00	205.60	8.6	4.8	7.8	25.5
Victoria	220.20	121.00	200.00	8.4	5.3	7.8	24.6
Queensland	219.10	96.20	192.00	8.7	4.4	7.8	27.8
South Australia	181.00	97.40	159.20	7.3	4.3	6.5	31.0
Western Australia	268.50	108.00	233.20	10.8	4.7	9.5	25.1
Tasmania	228.80	54.90	192.80	9.8	2.7	8.3	21.7
Northern Territory	* 260.70	79.50	* 229.20	9.0	4.6	8.3	* 37.0
Australian Capital Territory	150.70	74.00	136.90	7.0	3.6	6.4	25.8
<b>Australia</b>	<b>224.90</b>	<b>109.70</b>	<b>199.80</b>	<b>8.7</b>	<b>4.7</b>	<b>7.8</b>	<b>26.0</b>
PUBLIC							
New South Wales	221.30	150.10	208.10	6.6	4.9	6.3	20.1
Victoria	187.10	135.00	175.60	5.9	4.3	5.5	15.7
Queensland	194.70	153.40	188.10	6.3	4.8	6.0	23.7
South Australia	179.70	97.60	162.30	5.9	3.3	5.4	13.4
Western Australia	282.50	118.10	247.40	8.4	4.2	7.5	17.8
Tasmania	177.80	* 89.90	165.40	5.9	* 3.3	5.5	15.3
Northern Territory	286.80	* 144.60	248.10	9.8	3.7	8.2	12.6
Australian Capital Territory	218.50	130.70	194.80	6.9	3.9	6.1	12.5
<b>Australia</b>	<b>211.90</b>	<b>139.00</b>	<b>197.90</b>	<b>6.5</b>	<b>4.5</b>	<b>6.1</b>	<b>18.5</b>
PRIVATE AND PUBLIC							
New South Wales	228.50	123.70	206.20	8.1	4.8	7.4	24.0
Victoria	215.60	123.20	196.50	8.0	5.1	7.4	22.7
Queensland	212.10	108.40	191.00	8.0	4.5	7.3	26.6
South Australia	180.80	97.40	159.70	7.1	4.1	6.3	25.7
Western Australia	271.50	110.10	236.20	10.3	4.6	9.1	23.1
Tasmania	213.20	62.50	184.90	8.6	2.8	7.5	19.3
Northern Territory	264.70	95.20	232.40	9.2	4.3	8.2	27.9
Australian Capital Territory	178.80	104.90	162.60	6.9	3.8	6.2	17.5
<b>Australia</b>	<b>222.10</b>	<b>115.30</b>	<b>199.40</b>	<b>8.2</b>	<b>4.7</b>	<b>7.5</b>	<b>24.0</b>

(a) For those employees who received overtime pay.



	AVERAGE WEEKLY ORDINARY TIME EARNINGS.....			AVERAGE WEEKLY OVERTIME EARNINGS		AVERAGE WEEKLY TOTAL EARNINGS	AVERAGE WEEKLY HOURS PAID FOR.....		
	Base pay	Payment by measured result	Overaward and over- agreement pay	Total	Total	Total	Ordinary time	Overtime	Total
	\$	\$	\$	\$	\$	\$	hours	hours	hours
MALES									
Professionals	959.80	* 11.10	* 3.00	973.90	10.00	983.90	38.6	0.3	38.9
Associate professionals	841.80	* 28.50	3.60	873.90	44.60	918.50	39.0	1.6	40.6
Tradespersons and related workers	647.80	9.20	13.50	670.40	94.10	764.50	38.4	3.3	41.7
Advanced clerical and service workers	714.00	* 5.00	* 7.60	726.60	* 20.40	747.00	37.3	* 0.8	38.0
Intermediate clerical, sales and service workers	630.10	26.00	7.40	663.50	22.70	686.20	38.9	0.9	39.8
Intermediate production and transport workers	616.00	14.50	9.60	640.10	133.70	773.80	38.4	5.3	43.8
Elementary clerical, sales and service workers	554.40	* 13.90	* 4.30	572.60	27.70	600.30	39.1	1.3	40.3
Labourers and related workers	529.00	8.60	6.40	543.90	91.00	634.90	38.1	3.9	41.9
<b>All occupations</b>	<b>675.90</b>	<b>14.20</b>	<b>8.20</b>	<b>698.40</b>	<b>73.40</b>	<b>771.80</b>	<b>38.5</b>	<b>2.8</b>	<b>41.3</b>
FEMALES									
Professionals	820.50	* 5.70	* 2.30	828.50	6.60	835.10	37.8	0.2	38.0
Associate professionals	629.50	* 2.50	* 4.30	636.30	15.30	651.60	38.1	0.6	38.7
Tradespersons and related workers	500.60	* 0.80	* 8.90	510.30	27.40	537.70	38.1	1.3	39.4
Advanced clerical and service workers	616.20	* 2.00	4.90	623.10	* 16.50	639.60	37.7	* 0.7	38.3
Intermediate clerical, sales and service workers	551.60	2.30	4.00	557.90	10.40	568.40	38.5	0.5	38.9
Intermediate production and transport workers	508.00	* 3.70	* 5.80	517.40	51.80	569.20	38.2	2.4	40.6
Elementary clerical, sales and service workers	487.80	* 3.20	* 2.60	493.70	14.60	508.20	38.0	0.7	38.6
Labourers and related workers	478.80	* 3.20	* 3.70	485.70	39.60	525.40	37.8	1.9	39.7
<b>All occupations</b>	<b>592.70</b>	<b>3.00</b>	<b>3.90</b>	<b>599.60</b>	<b>16.60</b>	<b>616.20</b>	<b>38.1</b>	<b>0.7</b>	<b>38.8</b>
PERSONS									
Professionals	901.00	* 8.80	2.70	912.50	8.60	921.00	38.3	0.2	38.5
Associate professionals	759.80	* 18.40	3.90	782.10	33.30	815.40	38.6	1.2	39.9
Tradespersons and related workers	638.70	8.60	13.20	660.60	90.00	750.60	38.4	3.2	41.6
Advanced clerical and service workers	631.00	* 2.40	5.30	638.70	* 17.10	655.80	37.6	* 0.7	38.3
Intermediate clerical, sales and service workers	579.40	10.70	5.20	595.30	14.80	610.00	38.6	0.6	39.2
Intermediate production and transport workers	602.10	13.10	9.10	624.30	123.20	747.50	38.4	4.9	43.3
Elementary clerical, sales and service workers	518.90	* 8.20	* 3.40	530.50	20.70	551.20	38.5	0.9	39.4
Labourers and related workers	515.50	7.10	5.70	528.30	77.20	605.50	38.0	3.3	41.3
<b>All occupations</b>	<b>644.60</b>	<b>10.00</b>	<b>6.60</b>	<b>661.20</b>	<b>52.00</b>	<b>713.30</b>	<b>38.4</b>	<b>2.0</b>	<b>40.4</b>

## PRIVATE SECTOR, Earnings and Hours—Full-time Adult Non-managerial Employees—Industry

	AVERAGE WEEKLY ORDINARY TIME EARNINGS.....				AVERAGE WEEKLY OVERTIME EARNINGS	AVERAGE WEEKLY TOTAL EARNINGS	AVERAGE WEEKLY HOURS PAID FOR.....		
	Base pay	Payment by measured result	Overaward and over- agreement pay	Total	Total	Total	Ordinary time	Overtime	Total
	\$	\$	\$	\$	\$	\$	hours	hours	hours
MALES									
Mining	1 056.80	94.00	* 8.00	1 158.80	156.70	1 315.50	40.8	5.0	45.7
Manufacturing	635.30	7.20	11.80	654.30	97.80	752.10	38.0	3.8	41.8
Electricity, gas and water supply	848.80	* 1.70	* 0.50	851.00	80.00	931.00	37.9	2.4	40.3
Construction	733.00	* 3.60	* 4.20	740.90	115.90	856.80	38.8	4.3	43.1
Wholesale trade	647.60	* 15.80	8.90	672.40	36.10	708.50	38.3	1.5	39.9
Retail trade	520.60	26.00	10.10	556.80	25.90	582.60	38.5	1.3	39.7
Accommodation, cafes and restaurants	546.30	* 0.10	* 2.00	548.40	* 20.50	568.90	38.9	* 1.1	40.0
Transport and storage	670.90	* 7.10	* 3.30	681.30	139.00	820.30	38.6	5.3	43.9
Communication services	976.40	—	—	976.40	* 41.10	1 017.50	38.2	* 1.2	39.4
Finance and insurance	785.50	* 30.30	* 8.50	824.30	18.40	842.70	37.9	0.6	38.6
Property and business services	779.70	* 14.00	* 6.60	800.20	41.80	842.00	39.6	1.7	41.2
Education	762.00	* 13.00	* 3.80	778.80	* 4.00	782.80	36.9	* 0.3	37.2
Health and community services	621.00	* 5.90	* 7.90	634.80	* 10.30	645.10	38.6	* 0.4	39.0
Cultural and recreational services	687.70	* 8.00	* 7.00	702.70	* 19.70	722.40	38.5	0.8	39.3
Personal and other services(a)	589.20	* 1.80	* 1.10	592.00	83.40	675.50	37.8	3.3	41.0
<b>All industries(b)</b>	<b>675.90</b>	<b>14.20</b>	<b>8.20</b>	<b>698.40</b>	<b>73.40</b>	<b>771.80</b>	<b>38.5</b>	<b>2.8</b>	<b>41.3</b>
FEMALES									
Mining	852.70	* 4.80	* 1.40	858.90	* 19.20	878.00	40.0	* 0.7	40.7
Manufacturing	559.10	* 4.10	5.00	568.20	32.60	600.80	38.0	1.5	39.5
Electricity, gas and water supply	749.00	—	—	749.00	* 10.00	759.00	37.7	* 0.4	38.1
Construction	580.60	* 1.90	* 1.10	583.50	* 20.80	604.40	38.4	* 0.9	39.4
Wholesale trade	581.40	* 5.50	* 9.70	596.60	16.90	613.50	38.2	0.8	39.0
Retail trade	519.10	* 2.40	2.40	523.90	10.80	534.70	38.4	0.5	38.9
Accommodation, cafes and restaurants	501.60	* 0.30	* 3.80	505.70	* 9.90	515.60	39.2	* 0.5	39.7
Transport and storage	644.70	* 1.00	* 1.40	647.00	* 34.50	681.50	38.0	1.1	39.1
Communication services	728.90	* 1.00	* 1.10	730.90	* 9.30	740.20	37.9	* 0.3	38.3
Finance and insurance	631.80	* 0.60	4.00	636.30	12.00	648.30	37.7	0.5	38.2
Property and business services	629.90	* 2.80	* 3.20	635.90	* 13.60	649.40	38.3	* 0.6	38.9
Education	720.90	* 4.50	* 0.60	726.00	* 2.60	728.60	36.6	* 0.1	36.7
Health and community services	577.30	* 2.10	* 5.20	584.60	9.70	594.30	37.9	0.4	38.3
Cultural and recreational services	641.80	* 3.00	* 7.80	652.60	* 10.80	663.40	38.4	* 0.4	38.9
Personal and other services(a)	528.10	* 12.70	* 0.30	541.10	* 22.70	563.80	38.1	* 0.9	39.0
<b>All industries(b)</b>	<b>592.70</b>	<b>3.00</b>	<b>3.90</b>	<b>599.60</b>	<b>16.60</b>	<b>616.20</b>	<b>38.1</b>	<b>0.7</b>	<b>38.8</b>

(a) Excludes private households employing staff.

(b) Excludes Agriculture, forestry and fishing.

	AVERAGE WEEKLY ORDINARY TIME EARNINGS.....				AVERAGE WEEKLY OVERTIME EARNINGS	AVERAGE WEEKLY TOTAL EARNINGS	AVERAGE WEEKLY HOURS PAID FOR.....		
	Base pay	Payment by measured result	Overaward and over- agreement pay	Total	Total	Total	Ordinary time	Overtime	Total
	\$	\$	\$	\$	\$	\$	hours	hours	hours
PERSONS									
Mining	1 031.30	82.90	* 7.10	1 121.30	139.50	1 260.80	40.7	4.4	45.1
Manufacturing	617.80	6.50	10.30	634.50	82.80	717.30	38.0	3.3	41.3
Electricity, gas and water supply	830.30	* 1.40	* 0.40	832.10	67.00	899.00	37.9	2.0	39.9
Construction	714.90	* 3.40	* 3.80	722.10	104.60	826.80	38.8	3.9	42.7
Wholesale trade	627.80	12.70	9.10	649.70	30.40	680.00	38.3	1.3	39.6
Retail trade	520.00	16.00	6.90	542.90	19.50	562.40	38.4	1.0	39.4
Accommodation, cafes and restaurants	526.70	* 0.20	* 2.80	529.70	* 15.90	545.50	39.1	* 0.8	39.9
Transport and storage	663.40	* 5.40	* 2.80	671.60	109.30	780.90	38.4	4.1	42.5
Communication services	864.30	* 0.40	* 0.50	865.20	* 26.70	891.90	38.1	* 0.8	38.9
Finance and insurance	694.80	* 12.70	* 5.80	713.40	14.60	728.00	37.8	0.5	38.3
Property and business services	707.00	* 8.60	* 4.90	720.50	28.10	748.50	39.0	1.1	40.1
Education	736.20	* 7.70	* 1.80	745.70	* 3.10	748.80	36.7	* 0.2	36.9
Health and community services	584.60	* 2.70	* 5.70	593.00	9.80	602.80	38.0	0.4	38.4
Cultural and recreational services	668.40	* 5.90	* 7.30	681.70	16.00	697.60	38.5	0.6	39.1
Personal and other services(a)	556.20	* 7.70	* 0.70	564.50	50.60	615.20	38.0	2.0	40.0
<b>All industries(b)</b>	<b>644.60</b>	<b>10.00</b>	<b>6.60</b>	<b>661.20</b>	<b>52.00</b>	<b>713.30</b>	<b>38.4</b>	<b>2.0</b>	<b>40.4</b>

(a) Excludes private households employing staff.

(b) Excludes Agriculture, forestry and fishing.

	AVERAGE WEEKLY ORDINARY TIME EARNINGS.....				AVERAGE WEEKLY OVERTIME EARNINGS	AVERAGE WEEKLY TOTAL EARNINGS	AVERAGE WEEKLY HOURS PAID FOR.....		
	Base pay	Payment by measured result	Overaward and over- agreement pay	Total	Total	Total	Ordinary time	Overtime	Total
	\$	\$	\$	\$	\$	\$	hours	hours	hours
MALES									
New South Wales	692.20	14.80	10.20	717.20	74.90	792.10	38.2	2.8	40.9
Victoria	670.70	* 11.70	6.40	688.80	68.70	757.40	38.5	2.6	41.1
Queensland	655.30	19.00	10.40	684.70	76.90	761.70	38.7	3.1	41.8
South Australia	649.60	* 15.40	6.90	671.90	65.20	737.20	38.5	2.6	41.1
Western Australia	707.10	* 12.80	6.70	726.50	82.90	809.50	39.4	3.4	42.7
Tasmania	614.30	9.20	* 5.30	628.90	* 56.60	685.50	38.9	2.4	41.3
Northern Territory	657.20	* 7.40	* 2.50	667.00	* 121.40	788.50	38.8	4.2	43.0
Australian Capital Territory	660.20	* 11.60	* 2.00	673.80	50.80	724.60	38.3	* 2.4	40.6
<b>Australia</b>	<b>675.90</b>	<b>14.20</b>	<b>8.20</b>	<b>698.40</b>	<b>73.40</b>	<b>771.80</b>	<b>38.5</b>	<b>2.8</b>	<b>41.3</b>
FEMALES									
New South Wales	612.00	2.70	5.30	620.00	17.00	637.00	37.9	0.7	38.6
Victoria	600.00	* 3.00	3.00	606.00	16.30	622.30	38.1	0.7	38.8
Queensland	577.70	* 2.50	3.20	583.40	15.40	598.90	38.4	0.7	39.1
South Australia	556.30	* 4.10	* 2.70	563.20	21.70	584.80	38.0	0.9	38.9
Western Australia	564.40	* 4.10	* 4.60	573.10	16.30	589.50	38.7	0.7	39.4
Tasmania	525.00	* 1.80	* 1.90	528.70	* 8.10	536.70	38.0	* 0.4	38.4
Northern Territory	578.30	* 1.20	* 1.60	581.20	14.90	596.00	38.3	* 0.9	39.2
Australian Capital Territory	617.90	* 9.90	* 0.80	628.60	* 9.20	637.80	37.6	* 0.4	38.0
<b>Australia</b>	<b>592.70</b>	<b>3.00</b>	<b>3.90</b>	<b>599.60</b>	<b>16.60</b>	<b>616.20</b>	<b>38.1</b>	<b>0.7</b>	<b>38.8</b>
PERSONS									
New South Wales	661.10	10.10	8.30	679.50	52.40	731.90	38.1	2.0	40.0
Victoria	644.30	8.50	5.10	657.90	49.20	707.10	38.3	1.9	40.2
Queensland	625.70	12.70	7.70	646.10	53.50	699.60	38.6	2.2	40.8
South Australia	615.70	* 11.30	5.40	632.40	49.40	681.80	38.3	2.0	40.3
Western Australia	655.00	9.60	* 5.90	670.50	58.60	729.10	39.1	2.4	41.5
Tasmania	587.10	7.00	* 4.30	598.30	41.80	640.20	38.6	1.8	40.4
Northern Territory	630.00	* 5.30	* 2.20	637.40	* 84.70	722.20	38.6	3.1	41.7
Australian Capital Territory	644.50	* 11.00	* 1.60	657.00	35.30	692.40	38.0	1.6	39.7
<b>Australia</b>	<b>644.60</b>	<b>10.00</b>	<b>6.60</b>	<b>661.20</b>	<b>52.00</b>	<b>713.30</b>	<b>38.4</b>	<b>2.0</b>	<b>40.4</b>

AVERAGE WEEKLY ORDINARY TIME	AVERAGE WEEKLY TOTAL
------------------------------	----------------------

Earnings

\$

hours

Earnings

\$

hours

## MALES

Under 20 employees	603.90	39.0	632.50	40.4
20 to 49 employees	649.80	38.6	712.70	41.3
50 to 99 employees	713.00	38.2	803.00	41.7
100 to 499 employees	731.50	38.3	830.40	42.0
500 to 999 employees	781.80	38.5	900.00	42.6
1 000 and over employees	804.00	38.1	880.80	40.7
<b>Total</b>	<b>698.40</b>	<b>38.5</b>	<b>771.80</b>	<b>41.3</b>

## FEMALES

Under 20 employees	541.90	38.4	548.40	38.7
20 to 49 employees	590.20	38.3	601.30	38.9
50 to 99 employees	593.70	38.1	606.90	38.8
100 to 499 employees	618.60	38.0	638.70	38.9
500 to 999 employees	653.90	38.0	684.00	39.2
1 000 and over employees	647.60	37.6	675.40	38.7
<b>Total</b>	<b>599.60</b>	<b>38.1</b>	<b>616.20</b>	<b>38.8</b>

## PERSONS

Under 20 employees	580.70	38.8	601.10	39.7
20 to 49 employees	628.30	38.5	672.60	40.5
50 to 99 employees	666.70	38.2	726.90	40.6
100 to 499 employees	690.00	38.2	759.90	40.9
500 to 999 employees	738.90	38.3	827.50	41.5
1 000 and over employees	737.20	37.9	793.00	39.8
<b>Total</b>	<b>661.20</b>	<b>38.4</b>	<b>713.30</b>	<b>40.4</b>

## EXPLANATORY NOTES

### INTRODUCTION

**1** This publication contains estimates obtained from a sample survey of employers conducted in May 1998. The survey is designed to provide statistics on the distribution of employees according to weekly earnings and hours paid for, and on the composition of weekly earnings and hours paid for, for various categories of employees and principal occupations.

**2** Preliminary estimates were published in *Employee Earnings and Hours, Australia, Preliminary, May 1998* (Cat. no. 6305.0), released on 10 December 1998.

### SCOPE

**3** All wage and salary earners who received pay for the reference period are represented in the survey, except:

- members of the Australian permanent defence forces;
- employees of businesses primarily engaged in Agriculture, forestry and fishing;
- employees of private households employing staff;
- employees of overseas embassies, consulates, etc.;
- employees based outside Australia; and
- employees on workers' compensation who are not paid through the payroll.

**4** Also excluded are the following persons who are not regarded as employees for the purposes of this survey:

- directors who are not paid a salary;
- proprietors/partners of unincorporated businesses; and
- self-employed persons such as subcontractors, owner/drivers, consultants and persons paid solely by commission without a retainer.

### SURVEY DESIGN

**5** A sample of approximately 7,000 employers was selected from the Australian Bureau of Statistics (ABS) Business Register to ensure adequate State or Territory and industry representation. The statistical unit for the survey comprises all activities of an employer in a particular State or Territory. Each statistical unit was classified to an industry which reflects the predominant activity of the business in the State or Territory. The statistical units were stratified by State or Territory, public/private sector, industry and size of employer, and a simple random sample was selected from each stratum.

**6** Employers with fewer than 10 employees were required to report details for every employee, while those with 10 or more employees were required to select a random sample of their employees in accordance with instructions supplied by the ABS. Data for approximately 68,000 employees contributed to the results in this publication.

### OCCUPATION

**7** From May 1996, Employee Earnings and Hours occupation data have been classified according to the Australian Standard Classification of Occupations (ASCO), Second Edition, a detailed description of which appears in *ASCO—Australian Standard Classification of Occupations, Second Edition* (Cat. no. 1220.0).

## OCCUPATION *continued*

**8** Care should be taken when comparing survey estimates based on ASCO groups with estimates based on the managerial/non-managerial status of employees, which is determined and reported by the employer. Estimates for employees with managerial status include employees classified to ASCO categories other than the ASCO major group 'Managers and administrators'; e.g. employees classified as 'Professionals' according to ASCO may be categorised by employers as having managerial status. Conversely, tables in this publication which contain estimates for non-managerial employees (as defined by employers) will include some employees who would be classified to the ASCO major group 'Managers and administrators'.

## COMPARABILITY OF RESULTS

**9** A new sample design was implemented in 1995, primarily to accommodate the full introduction of a new industry classification—the Australian and New Zealand Standard Industrial Classification (ANZSIC). Prior to 1995, industry estimates were compiled from a sample design where the sample stratification was based on Australian Standard Industrial Classification (ASIC). In 1994 ANZSIC industry estimates were produced from the ASIC-based sample design. ANZSIC-based industry level estimates compiled from 1995 onwards are more reliable than those produced for 1994 and care should be exercised in comparing 1994 ANZSIC-based estimates with those for later years.

**10** Care should also be taken when comparing the results of this survey with the quarterly series *Average Weekly Earnings, States and Australia* (Cat. no. 6302.0), as a different sample design and survey methodology are used. The Survey of Average Weekly Earnings collects information relating to the total number of employees of organisations selected in the survey, whereas results from the Survey of Employee Earnings and Hours are obtained from a sample of employees within the organisations selected. In addition, the size of the employer sample for the Survey of Employee Earnings and Hours is larger than that for the Survey of Average Weekly Earnings.

**11** Because of the two-stage sampling methodology used for this survey to arrive at a sample of employees, it is not possible to ensure that the representation of all the subgroups of interest in the sample accurately reflects their representation in the population.

**12** From the May 1993 survey, payments resulting from workplace and enterprise bargaining agreements have been included in 'Base pay'. Similarly, some payments previously defined as 'Overaward pay' may have been absorbed into the 'Base pay' now paid under a workplace/enterprise agreement. Identifiable 'Payments by measured result' and 'Overtime paid' in accordance with a workplace/enterprise agreement and/or an award continue to be recorded separately.

## RELIABILITY OF ESTIMATES

**13** Estimates are subject to sampling and non-sampling errors. For information on the reliability of estimates see Technical notes.

## RELATED PUBLICATIONS

**14** Users may also wish to refer to the following publications which are available on request:

- *Average Weekly Earnings, Australia, Preliminary* (Cat. no. 6301.0)—issued quarterly
- *Average Weekly Earnings, States and Australia* (Cat. no. 6302.0)—issued quarterly
- *Employee Earnings and Hours, Australia, Preliminary* (Cat. no. 6305.0)—issued two-yearly
- *Job Vacancies and Overtime, Australia* (Cat. no. 6354.0)—issued quarterly
- *Labour Costs, Australia, 1996–97* (Cat. no. 6348.0)—irregular
- *Labour Force, Australia* (Cat. no. 6203.0)—issued monthly
- *Labour Force Projections, Australia 1995 to 2011* (Cat. no. 6260.0)—irregular
- *Labour Statistics: Concepts, Sources and Methods, 1986* (Cat. no. 6102.0)—irregular
- *Occasional Paper No. 1986/1: Statistics on Wages, Earnings, Income and Labour Costs — A Guide to Their Concepts, Measurements and Usage*—irregular
- *Wage and Salary Earners, Australia* (Cat. no. 6248.0)—issued quarterly
- *Wage Cost Index, Australia* (Cat. no. 6345.0)—issued quarterly
- *Employee Earnings, Benefits and Trade Union Membership, Australia* (Cat. no. 6310.0)—issued annually

**15** Current publications produced by the ABS are listed in the *Catalogue of Publications and Products* (Cat. no. 1101.0). The ABS also issues, on Tuesdays and Fridays, a *Release Advice* (Cat. no. 1105.0) which lists publications to be released in the next few days. The Catalogue and Release advice are available from any ABS office.

## UNPUBLISHED STATISTICS

**16** In most cases, the ABS can also make available information which is not published. This information may be made available in one or more of the following forms: photocopy, data tape, floppy disk, CD-ROM, computer printout or clerically extracted tabulation. Generally, a charge is made for providing unpublished information. Details of additional data available from this survey are shown at the end of this publication.

## ROUNDING

**17** Estimates of earnings shown in the tables are rounded to the nearest 10 cents, and those of average weekly hours paid for are rounded to the first decimal place.

**18** Where figures have been rounded, discrepancies may occur between sums of the component items and totals.



## TECHNICAL NOTES

### INTRODUCTION

**1** As the estimates in this publication are based on information relating to a sample of employers and employees, rather than a full enumeration, they are subject to sampling variability. That is, they may differ from the figures that would have been produced if the information had been obtained from all employers and all employees. This difference, called *sampling error*, should not be confused with inaccuracy that may occur because of the imperfections in reporting by respondents or in processing by the ABS. Such inaccuracy is referred to as *non-sampling error* and may occur in any enumeration whether it be a full count or sample. Efforts have been made to reduce non-sampling error by careful design of questionnaires, detailed checking of returns and quality control of processing.

### RELIABILITY OF ESTIMATES

**2** The sampling error associated with any estimate can be estimated from the sample results. One measure of sampling error is given by the *standard error*, which indicates the degree to which an estimate may vary from the value that would have been obtained from a full enumeration (the 'true' figure). There are about two chances in three that a sample estimate differs from the true value by less than one standard error, and about nineteen chances in twenty that the difference will be less than two standard errors.

**3** Another measure of the sampling error is the *relative standard error*, which is obtained by expressing the standard error as a percentage of the estimate to which it refers. The relative standard error is a useful measure in that it provides an immediate indication of the percentage errors likely to have occurred due to sampling, and thus avoids the need to refer also to the size of the estimate. As it is not practicable to include the standard errors of all estimates in this publication, tables A to E on pages 59 to 64 have been produced to give an indication of the magnitude of relative standard errors.

**4** The figures in table A provide an indication of the relative standard error of estimates of averages (composition of average weekly earnings and hours) for full-time adult non-managerial employees. An example of the use of table A is as follows. Table 16 shows average overtime earnings of full-time adult non-managerial males to be \$69.40. Table A shows the approximate relative standard error for this estimate to be 3.8% (i.e. approximately \$2.60). There are about two chances in three that a full enumeration would give a figure within the range \$66.80 to \$72.00 and about nineteen chances in twenty that the figure would be within the range of \$64.20 to \$74.60.

**5** Tables B, C, D and E indicate the relative standard error of estimates of average weekly total earnings for various categories of employees by occupation, industry, sector, and State or Territory respectively. The use of the relative standard errors from these tables can be applied in the same way as in the example for table A above.

**6** Relative standard errors can be converted to estimates of actual standard errors using the survey estimate and its associated relative standard error percent in the following manner:

$$SE(x) = x * RSE\%(x) / 100$$

For example, from table 4, the average weekly total earnings for all male employees in retail trade is \$440.60, and for all female employees it is \$308.70. Table C shows an estimate for the relative standard error on the male estimate is 2.1%, and an estimate of the relative standard error on the female estimate is 2.9%. Applying the above SE(x) formula yields:

$$\begin{aligned} \text{Males: } SE(440.60) &= 440.60 * 2.1 / 100 \\ &= \$9.30 \end{aligned}$$

$$\begin{aligned} \text{Females: } SE(308.70) &= 308.70 * 2.9 / 100 \\ &= \$9.00 \end{aligned}$$

**7** The difference between two survey estimates is also an estimate and it is therefore subject to sampling variability. The standard error on the difference between two survey estimates depends on the standard errors of the original estimates and on the relationship (correlation) between these two estimates. An approximate standard error on the difference between two survey estimates ( $x-y$ ) may be obtained by the following formula:

$$SE(x-y) = \sqrt{SE(x)^2 + SE(y)^2}$$

**8** This formula will overestimate the standard error where there is a positive correlation between the two estimates (e.g. male school teachers and female school teachers). While this formula will only be accurate where there is no correlation between the two estimates (e.g. estimates from different States), it is expected to provide a reasonable approximation for the differences likely to be of interest.

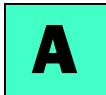
**9** Continuing the previous example of employees in retail trade (above), an estimate of the difference between the earnings of male and female employees is \$131.90. The estimate of the standard error of the difference between the average weekly total earnings for male and female employees in retail trade is:

$$\begin{aligned} SE(\$440.60 - \$308.70) &= \sqrt{(\$9.30)^2 + (\$9.00)^2} \\ &= \$12.90 \end{aligned}$$

**10** The estimated standard error of \$12.90 represents a relative standard error of 9.8%. There are about two chances in three that the true figure lies in the range \$119.00 to \$144.80, and about 19 chances in 20 that the figure is in the range \$106.10 to \$157.70.

**11** While the formula above can be used to estimate the standard error on a difference between estimated averages in two different years, the EEH Survey is not specifically designed to measure this type of movement. To do so would require a high proportion of employees selected in the survey for each year. While there is a reasonable proportion of common employers, there are very few employees selected in both the 1996 and 1998 survey. Comparisons of this nature should therefore be made with caution (especially of estimates relating to occupation). When estimating the standard error of a movement between years, the movement standard error will be approximately 1.5 times the standard error on the level estimate, if the standard errors on the the two level estimates are similar.

**12** An asterisk appears against estimates in this publication where the sampling variability is considered too high for most practical uses. This indicates a relative standard error equal to or greater than 25% of the estimate.



# RELATIVE STANDARD ERRORS, Composition—Full-time Adult Non-managerial Employees—Sector

	AVERAGE WEEKLY ORDINARY TIME EARNINGS.....				AVERAGE WEEKLY OVERTIME EARNINGS	AVERAGE WEEKLY TOTAL EARNINGS	AVERAGE WEEKLY HOURS PAID FOR.....		
	<i>Base pay</i>	<i>Payment by measured result</i>	<i>Overaward and over- agreement pay</i>	<i>Total</i>	<i>Total</i>	<i>Total</i>	<i>Ordinary time</i>	<i>Overtime</i>	<i>Total</i>
	%	%	%	%	%	%	%	%	%
PRIVATE									
Males	0.9	10.2	9.2	0.8	3.8	0.8	0.2	3.7	0.3
Females	0.9	16.2	13.1	0.8	7.1	0.8	0.2	6.6	0.2
<b>Persons</b>	<b>0.7</b>	<b>9.6</b>	<b>8.4</b>	<b>0.7</b>	<b>3.9</b>	<b>0.7</b>	<b>0.1</b>	<b>3.8</b>	<b>0.2</b>
PUBLIC									
Males	0.5	11.4	18.5	0.5	4.6	0.6	0.1	4.0	0.2
Females	0.4	78.5	29.2	0.4	7.6	0.4	0.1	7.1	0.1
<b>Persons</b>	<b>0.3</b>	<b>11.8</b>	<b>15.7</b>	<b>0.3</b>	<b>4.4</b>	<b>0.4</b>	<b>0.1</b>	<b>3.9</b>	<b>0.2</b>
PRIVATE AND PUBLIC									
Males	0.6	10.0	8.8	0.6	3.2	0.6	0.1	3.2	0.2
Females	0.6	16.0	12.5	0.6	5.7	0.6	0.1	5.5	0.1
<b>Persons</b>	<b>0.5</b>	<b>9.3</b>	<b>8.1</b>	<b>0.5</b>	<b>3.2</b>	<b>0.5</b>	<b>0.1</b>	<b>3.1</b>	<b>0.2</b>

## RELATIVE STANDARD ERRORS, Average Weekly Total Earnings—Occupation

FULL-TIME EMPLOYEES..... PART-TIME EMPLOYEES ALL EMPLOYEES

<i>Managerial adult</i>	<i>Non- managerial adult</i>	<i>Non- managerial junior</i>	<i>Non- managerial total</i>	<i>Total adult</i>	<i>Total</i>	<i>Total</i>	<i>Total</i>
%	%	%	%	%	%	%	%

## MALES

Managers and administrators(a)	1.8	3.6	0.0	3.6	1.8	1.8	21.0	1.9
Professionals	3.8	1.0	4.3	1.0	1.1	1.1	6.8	1.3
Associate professionals	3.1	1.3	4.9	1.3	1.5	1.5	9.9	1.6
Tradespersons and related workers	4.0	1.2	2.3	1.4	1.2	1.4	12.1	1.4
Advanced clerical and service workers	16.9	1.8	20.9	1.8	3.7	3.7	17.8	4.2
Intermediate clerical, sales and service workers	4.7	1.0	9.8	1.1	0.9	1.1	4.5	1.4
Intermediate production and transport workers	8.1	1.4	3.5	1.4	1.4	1.4	3.7	1.6
Elementary clerical, sales and service workers	9.5	1.4	5.0	1.4	1.4	1.4	4.7	2.4
Labourers and related workers	10.2	1.4	3.4	1.4	1.4	1.4	3.7	2.0
<b>All occupations</b>	<b>1.6</b>	<b>0.6</b>	<b>1.8</b>	<b>0.6</b>	<b>0.7</b>	<b>0.7</b>	<b>2.2</b>	<b>0.8</b>

## FEMALES

Managers and administrators(a)	5.7	10.8	0.0	10.8	5.5	5.5	8.3	5.6
Professionals	8.2	0.9	7.7	0.9	1.1	1.1	2.2	1.3
Associate professionals	3.5	1.4	7.4	1.4	1.5	1.5	6.8	2.4
Tradespersons and related workers	6.5	2.4	4.6	3.0	2.3	2.9	6.9	3.7
Advanced clerical and service workers	7.9	1.3	4.0	1.4	1.4	1.4	3.8	1.7
Intermediate clerical, sales and service workers	6.4	0.7	2.4	0.7	0.7	0.7	1.9	1.2
Intermediate production and transport workers	29.4	2.3	4.9	2.3	2.3	2.3	6.9	3.6
Elementary clerical, sales and service workers	18.3	1.3	2.3	1.3	1.3	1.3	2.3	1.9
Labourers and related workers	7.4	1.7	7.8	1.7	1.7	1.7	3.6	3.3
<b>All occupations</b>	<b>3.6</b>	<b>0.6</b>	<b>1.6</b>	<b>0.6</b>	<b>0.8</b>	<b>0.8</b>	<b>1.1</b>	<b>1.0</b>

## PERSONS

Managers and administrators(a)	1.9	3.8	0.0	3.8	1.8	1.8	9.7	1.9
Professionals	3.5	0.8	4.7	0.8	0.9	0.9	2.4	1.1
Associate professionals	2.7	1.2	5.2	1.2	1.3	1.3	5.6	1.5
Tradespersons and related workers	3.8	1.2	2.2	1.4	1.2	1.4	7.5	1.4
Advanced clerical and service workers	9.4	1.2	4.0	1.2	1.4	1.4	3.8	1.7
Intermediate clerical, sales and service workers	4.1	0.6	3.4	0.7	0.6	0.7	1.8	1.1
Intermediate production and transport workers	8.1	1.3	3.2	1.3	1.3	1.3	3.7	1.6
Elementary clerical, sales and service workers	11.3	1.1	2.4	1.1	1.1	1.1	2.3	1.6
Labourers and related workers	12.9	1.2	3.4	1.2	1.2	1.2	2.8	2.0
<b>All occupations</b>	<b>1.6</b>	<b>0.5</b>	<b>1.4</b>	<b>0.5</b>	<b>0.6</b>	<b>0.6</b>	<b>1.1</b>	<b>0.7</b>

(a) See paragraph 8 of the Explanatory notes.



# RELATIVE STANDARD ERRORS, Average Weekly Total Earnings—Industry

FULL-TIME EMPLOYEES..... PART-TIME EMPLOYEES ALL EMPLOYEES

<i>Managerial adult</i>	<i>Non- managerial adult</i>	<i>Non- managerial junior</i>	<i>Non- managerial total</i>	<i>Total adult</i>	<i>Total</i>	<i>Total</i>	<i>Total</i>
%	%	%	%	%	%	%	%

## MALES

Mining	8.5	2.2	15.4	2.2	3.4	3.4	10.8	3.5
Manufacturing	2.8	1.1	2.7	1.2	1.1	1.2	9.3	1.3
Electricity, gas and water supply	4.0	1.6	12.9	1.6	1.7	1.7	12.8	1.7
Construction	11.5	2.9	5.9	3.3	3.5	3.7	8.2	3.8
Wholesale trade	3.7	2.2	5.5	2.3	2.2	2.3	9.7	2.5
Retail trade	3.9	1.8	3.2	1.7	1.8	1.7	5.0	2.1
Accommodation, cafes and restaurants	4.5	2.6	4.6	3.0	2.1	2.3	5.2	3.2
Transport and storage	5.5	2.7	5.9	2.7	2.7	2.7	6.2	3.3
Communication services	7.1	1.7	n.a.	1.7	2.3	2.3	6.2	2.4
Finance and insurance	4.6	3.2	4.6	3.2	3.3	3.3	11.0	3.3
Property and business services	3.7	2.1	4.4	2.4	2.0	2.1	6.5	3.2
Government administration and defence(a)	2.1	1.1	9.7	1.1	1.2	1.2	12.7	1.3
Education	2.8	1.1	6.3	1.3	1.0	1.2	4.0	1.5
Health and community services	7.5	2.2	11.4	2.2	2.7	2.7	6.2	2.8
Cultural and recreational services	16.7	3.3	19.7	5.1	7.3	8.4	7.4	9.1
Personal and other services(b)	6.8	1.8	5.3	1.9	2.0	2.0	14.6	3.8
<b>All industries(c)</b>	<b>1.6</b>	<b>0.6</b>	<b>1.8</b>	<b>0.6</b>	<b>0.7</b>	<b>0.7</b>	<b>2.2</b>	<b>0.8</b>

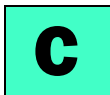
## FEMALES

Mining	19.1	2.4	3.1	2.9	2.5	2.9	14.8	3.4
Manufacturing	5.9	1.3	4.2	1.3	1.3	1.3	5.0	1.8
Electricity, gas and water supply	5.9	2.1	2.1	2.2	2.3	2.4	11.2	2.6
Construction	13.4	2.5	3.4	3.2	3.5	3.8	8.4	4.4
Wholesale trade	5.9	1.8	5.4	1.9	1.8	1.9	5.3	2.9
Retail trade	4.6	3.2	2.8	3.2	2.7	2.7	2.6	2.9
Accommodation, cafes and restaurants	8.3	2.0	12.0	2.3	2.8	2.9	4.2	3.3
Transport and storage	11.0	4.3	5.2	4.3	4.1	4.0	5.4	3.4
Communication services	5.4	1.8	n.a.	1.8	1.8	1.8	4.8	2.7
Finance and insurance	5.8	1.3	3.7	1.3	1.7	1.8	2.8	1.7
Property and business services	13.8	2.2	2.8	2.3	4.4	4.5	3.1	4.5
Government administration and defence(a)	4.5	0.8	8.0	0.9	1.2	1.2	5.6	1.8
Education	4.7	0.7	7.4	0.7	0.8	0.8	2.9	2.1
Health and community services	3.6	1.5	4.2	1.6	1.5	1.5	1.8	1.4
Cultural and recreational services	11.0	3.5	3.6	4.2	3.2	3.9	11.5	10.0
Personal and other services(b)	6.8	2.0	4.1	2.5	2.1	2.3	5.4	3.1
<b>All industries(c)</b>	<b>3.6</b>	<b>0.6</b>	<b>1.6</b>	<b>0.6</b>	<b>0.8</b>	<b>0.8</b>	<b>1.1</b>	<b>1.0</b>

(a) Excludes permanent defence forces.

(b) Excludes private households employing staff.

(c) Excludes Agriculture, forestry and fishing.



# RELATIVE STANDARD ERRORS, Average Weekly Total Earnings—Industry *continued*

FULL-TIME EMPLOYEES..... PART-TIME EMPLOYEES ALL EMPLOYEES

<i>Managerial adult</i>	<i>Non-managerial adult</i>	<i>Non-managerial junior</i>	<i>Non-managerial total</i>	<i>Total adult</i>	<i>Total</i>	<i>Total</i>	<i>Total</i>
%	%	%	%	%	%	%	%

## PERSONS

Mining	9.0	2.0	14.6	2.0	2.8	2.8	10.1	2.9
Manufacturing	2.8	1.1	2.5	1.1	1.1	1.1	4.8	1.3
Electricity, gas and water supply	3.8	1.4	11.3	1.4	1.5	1.5	9.0	1.5
Construction	11.4	2.7	5.4	3.0	3.2	3.4	5.9	3.6
Wholesale trade	3.9	1.7	4.3	1.8	1.8	1.9	5.6	2.2
Retail trade	3.5	1.7	2.4	1.7	1.7	1.6	2.7	2.1
Accommodation, cafes and restaurants	4.4	1.9	5.4	2.2	1.8	1.9	3.9	2.6
Transport and storage	5.5	2.5	4.5	2.5	2.5	2.5	4.6	2.7
Communication services	6.5	1.5	0.0	1.5	2.0	2.0	4.0	2.3
Finance and insurance	4.3	1.9	3.2	1.9	2.4	2.5	2.9	2.4
Property and business services	4.6	1.8	3.1	2.0	2.1	2.2	3.0	2.8
Government administration and defence(a)	2.0	0.8	6.2	0.8	1.0	1.0	6.6	1.2
Education	3.3	0.7	4.5	0.7	0.7	0.7	2.5	1.6
Health and community services	4.4	1.5	4.2	1.5	1.6	1.6	1.9	1.5
Cultural and recreational services	14.1	2.7	11.4	4.3	5.1	6.3	7.8	7.8
Personal and other services(b)	5.6	1.9	4.2	2.0	1.9	2.0	7.2	3.0
<b>All industries(c)</b>	<b>1.6</b>	<b>0.5</b>	<b>1.4</b>	<b>0.5</b>	<b>0.6</b>	<b>0.6</b>	<b>1.1</b>	<b>0.7</b>

(a) Excludes permanent defence forces.

(b) Excludes private households employing staff.

(c) Excludes Agriculture, forestry and fishing.



## RELATIVE STANDARD ERRORS, Average Weekly Total Earnings—Sector

	FULL-TIME EMPLOYEES.....						PART-TIME EMPLOYEES	ALL EMPLOYEES
	<i>Managerial adult</i>	<i>Non- managerial adult</i>	<i>Non- managerial junior</i>	<i>Non- managerial total</i>	<i>Total adult</i>	<i>Total</i>	<i>Total</i>	<i>Total</i>
	%	%	%	%	%	%	%	%
MALES								
Private	1.9	0.8	1.8	0.9	0.8	0.9	2.4	1.0
Public	1.2	0.6	7.2	0.6	0.5	0.5	6.4	0.8
<b>Private and public</b>	<b>1.6</b>	<b>0.6</b>	<b>1.8</b>	<b>0.6</b>	<b>0.7</b>	<b>0.7</b>	<b>2.2</b>	<b>0.8</b>
FEMALES								
Private	4.5	0.8	1.6	0.8	1.2	1.2	1.3	1.3
Public	2.0	0.4	4.8	0.4	0.5	0.5	2.1	1.2
<b>Private and public</b>	<b>3.6</b>	<b>0.6</b>	<b>1.6</b>	<b>0.6</b>	<b>0.8</b>	<b>0.8</b>	<b>1.1</b>	<b>1.0</b>
PERSONS								
Private	1.8	0.7	1.4	0.7	0.7	0.8	1.3	0.9
Public	1.1	0.4	4.3	0.4	0.4	0.4	2.2	0.7
<b>Private and public</b>	<b>1.6</b>	<b>0.5</b>	<b>1.4</b>	<b>0.5</b>	<b>0.6</b>	<b>0.6</b>	<b>1.1</b>	<b>0.7</b>



# RELATIVE STANDARD ERRORS, Average Weekly Total Earnings—States & Territories

FULL-TIME EMPLOYEES..... PART-TIME EMPLOYEES ALL EMPLOYEES

	<i>Managerial adult</i>	<i>Non-managerial adult</i>	<i>Non-managerial junior</i>	<i>Non-managerial total</i>	<i>Total adult</i>	<i>Total</i>	<i>Total</i>	<i>Total</i>
	%	%	%	%	%	%	%	%

## MALES

New South Wales	2.6	0.9	4.3	1.0	1.0	1.1	3.3	1.4
Victoria	2.7	1.5	3.1	1.6	1.4	1.4	4.5	1.7
Queensland	6.3	1.4	3.6	1.4	2.1	2.1	6.9	2.4
South Australia	3.5	2.0	3.1	2.0	1.6	1.7	5.4	2.1
Western Australia	4.0	1.8	4.1	1.9	1.8	1.8	7.5	2.1
Tasmania	7.9	2.4	5.7	2.7	2.6	2.7	10.6	2.8
Northern Territory	4.6	3.5	7.7	4.5	3.2	4.0	7.4	3.7
Australian Capital Territory	4.2	2.3	15.9	2.4	2.6	2.7	7.1	2.7
<b>Australia</b>	<b>1.6</b>	<b>0.6</b>	<b>1.8</b>	<b>0.6</b>	<b>0.7</b>	<b>0.7</b>	<b>2.2</b>	<b>0.8</b>

## FEMALES

New South Wales	7.1	0.9	3.4	0.9	1.8	1.8	1.8	1.9
Victoria	3.8	1.3	3.8	1.3	1.2	1.2	2.0	1.7
Queensland	4.7	1.4	3.1	1.5	1.4	1.5	3.0	2.0
South Australia	6.2	1.3	2.7	1.3	1.4	1.4	3.1	2.1
Western Australia	5.8	1.7	2.4	1.7	1.7	1.7	4.2	2.9
Tasmania	8.4	1.8	4.5	2.0	1.9	2.2	5.6	3.5
Northern Territory	7.8	2.0	4.3	2.0	2.0	2.0	5.1	2.7
Australian Capital Territory	3.1	1.3	7.0	1.4	1.4	1.4	4.9	2.5
<b>Australia</b>	<b>3.6</b>	<b>0.6</b>	<b>1.6</b>	<b>0.6</b>	<b>0.8</b>	<b>0.8</b>	<b>1.1</b>	<b>1.0</b>

## PERSONS

New South Wales	2.7	0.7	3.1	0.8	0.9	1.0	1.8	1.3
Victoria	2.5	1.2	2.7	1.2	1.1	1.2	2.0	1.4
Queensland	5.5	1.1	2.7	1.2	1.6	1.6	3.1	1.9
South Australia	3.6	1.1	2.5	1.2	1.1	1.1	2.9	1.8
Western Australia	3.7	1.6	2.7	1.6	1.5	1.6	3.9	2.3
Tasmania	6.8	1.8	4.0	2.0	2.0	2.1	5.1	2.8
Northern Territory	4.1	2.4	7.3	3.1	2.3	2.9	4.6	2.7
Australian Capital Territory	3.4	1.4	14.2	1.5	1.7	1.7	4.4	2.0
<b>Australia</b>	<b>1.6</b>	<b>0.5</b>	<b>1.4</b>	<b>0.5</b>	<b>0.6</b>	<b>0.6</b>	<b>1.1</b>	<b>0.7</b>



## G L O S S A R Y

<b>Adult employees</b>	Adult employees are those employees who are 21 years of age or over and employees under 21 who are paid at the full adult rate for their occupation.
<b>Average earnings or hours</b>	Average (mean) earnings or hours refers to the amount obtained by dividing the total earnings or hours of a group (e.g. full-time employees) by the number of employees in that group.
<b>Base pay</b>	Base pay refers to the award pay or agreed rate of pay for ordinary time hours paid for. It includes base pay from workplace agreements and enterprise bargaining awards and agreements. For employees covered by an award or workplace/enterprise agreement it includes all allowances (dirt, height, tool, etc.) and penalty payments (e.g. shift loadings) specified in the award or agreement. It excludes overaward and overagreement pay and service increments not specified in the award or agreement. For employees not covered by an award or agreement, base pay is the agreed wage for ordinary time hours paid for.
<b>Casual employees</b>	Casual employees usually receive a higher rate of pay, to compensate for lack of permanency and leave entitlements.
<b>Employees</b>	Employees refers to all wage and salary earners (as defined in paragraphs 3 and 4 of the Explanatory Notes) who received pay for any part of the reference period.
<b>Employer Size</b>	To derive estimates of employer size, each of the employer units in the survey was allocated a size classification based on the number of employees actually reported for the reference period. The size classification reflects the size of a business in each State or Territory and not necessarily the size of a business Australia-wide.
<b>Full-time employees</b>	Full-time employees are permanent, temporary and casual employees who usually work the agreed or award hours for a full-time employee in their occupation and received pay for any part of the reference period. If agreed or award hours do not apply, employees are regarded as full-time if they usually work 35 hours or more per week. Casual employees are classified as full-time (or part-time) according to the hours worked in the reference week.
<b>Industry</b>	Industry data from the Survey of Employee Earnings and Hours has been classified according to the 1993 Australian and New Zealand Standard Industrial Classification (ANZSIC), a detailed description of which appears in <i>Australian and New Zealand Standard Industrial Classification, 1993</i> (ANZSIC) (Cat. no. 1292.0). Employees selected in the survey are classified to the industry of the business in which they are employed (see paragraph 5 of the Explanatory Notes).
<b>Junior employees</b>	Junior employees are those employees who are under 21 years of age and are not paid at the adult rate for their occupation.
<b>Managerial employees</b>	Managerial employees are managerial, executive and senior professional staff. They are generally defined as those employees who are in charge of a significant number of employees or have significant responsibilities in the conduct or operations of the organisation and usually do not receive payment for overtime. This includes professionally qualified staff who primarily perform managerial tasks in conjunction with utilising their professional skills. Working proprietors of own incorporated businesses have been included as managerial employees.
<b>Median earnings or hours</b>	Median earnings or hours refers to the amount of earnings or hours which divides the distribution into two groups with equal numbers of employees, one half having earnings or hours below the median and the other half having earnings or hours above the median.

<b>Non-managerial employees</b>	Non-managerial employees are those who are not managerial employees as defined. Non-managerial includes supervisors, clerical staff, tradespersons, non-managerial professionals, apprentices, trainees and cadets.
<b>Ordinary time hours paid for</b>	Ordinary time hours paid for refers to employees' award, standard or agreed hours of work paid for at the ordinary rate. It includes stand-by or reporting time hours which are part of standard hours of work, and that part of annual leave, paid sick leave and long service leave taken during the reference period. (Note: Hours paid for was not collected for managerial employees.)
<b>Overaward and overagreement pay</b>	Overaward and overagreement pay refers to amounts of ordinary time pay (regular or otherwise) that are over the award or in excess of amounts specified in workplace/enterprise agreements (e.g. attendance, good time-keeping, profit-sharing, etc.). It excludes payments in the form of a reimbursement for expenses incurred whilst carrying out the employer's business (e.g. payments from petty cash).
<b>Overtime hours paid for</b>	Overtime hours paid for refers to hours in excess of award, standard or agreed hours of work paid for and reported as overtime hours.
<b>Part-time employees</b>	Part-time employees are those who are not full-time as defined.
<b>Payment by measured result</b>	Payment by measured result refers to earnings which vary according to measured performance (e.g. piecework, production and task bonuses, and commissions).
<b>Percentiles</b>	Percentiles refer to any of a hundred divisions of an earnings or hours distribution. For example:  25% of employees earn less than or equal to the 25th percentile; and  75% of employees earn less than or equal to the 75th percentile.
<b>Permanent employees</b>	Permanent employees are entitled to be paid annual leave.
<b>Reference period</b>	Reference period for the survey refers to the last pay period ending on or before 15 May 1998.
<b>Sector</b>	Public sector includes local government authorities and all government departments and agencies created by, or reporting to, the Commonwealth Parliament or State and Territory Parliaments. All remaining employees are classified as private sector.
<b>Temporary employees</b>	Temporary employees may receive some leave entitlements but are employed on a short-term basis.
<b>Weekly ordinary time earnings</b>	Weekly ordinary time earnings of employees refers to one week's earnings for the reference period attributable to award, standard or agreed hours of work. It is calculated before taxation and any other deductions (e.g. superannuation, board and lodging) have been made. Included in ordinary time earnings are award, and workplace and enterprise bargaining payments and other agreed base rates of pay; overaward and overagreement payments; penalty payments; shift and other allowances; commissions and retainers; bonuses and similar payments related to the reference period; payments under incentive or piecework; payments under profit-sharing schemes normally paid each pay period; payments for leave taken during the reference period; all workers' compensation payments made through the payroll; and salary payments made to directors. Excluded are overtime payments, retrospective pay, pay in advance, leave loadings, severance pay, termination and redundancy payments, payments under salary packaging and other payments not related to the reference period.

## GLOSSARY *continued*

<b>Weekly overtime earnings</b>	Weekly overtime earnings of employees refers to payment for hours in excess of award, standard or agreed hours of work which has been reported as overtime pay.
<b>Weekly total earnings</b>	Weekly total earnings of employees is equal to weekly ordinary time earnings plus weekly overtime earnings.
<b>Weekly total hours paid for</b>	Weekly total hours paid for refers to the hours for which payment was made. It comprises ordinary time hours and overtime hours. For employees paid other than weekly, hours were converted to a weekly basis. For employees who began or ceased work, or were absent without pay for any reason during the reference period, only the hours actually paid for were included. (Note: Hours of work were not collected for managerial employees.)

SPECIAL DATA SERVICE

INTRODUCTION

A large range of final estimates of unpublished data from this survey will be available on request. These data can be produced for clients as customised reports. The populations and variables are listed below.

HOW TO PLACE AN ORDER

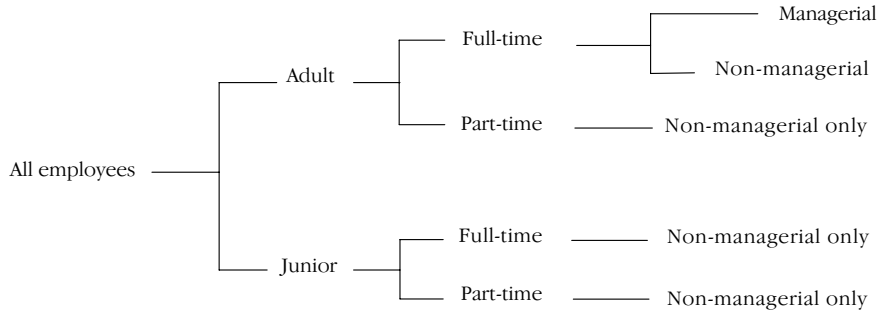
Firstly, determine the population and the variables (see following) for which you require estimates. A letter indicating these requirements and the intended uses of the data requested should be addressed to:

Labour Statistics Centre  
Output Group  
Australian Bureau of Statistics  
GPO Box K881  
PERTH WA 6842

CONTACT OFFICER

If you wish to discuss individual requests, especially in regard to the reliability of estimates for particular cross-classifications, and the charges involved, please telephone the Labour Statistics Centre, Output Group on Perth 08 9360 5305 or send a request by facsimile to 08 9360 5954.

POPULATIONS



VARIABLES

The following variables are available from this survey (the more variables included in any one tabulation the more likely it is that confidentiality provisions associated with the data will be invoked and some data suppressed).

Distribution of employees by levels of	Weekly total earnings
	Weekly ordinary time earnings
	Weekly overtime earnings
	Weekly total hours paid for
	Weekly ordinary time hours paid for
	Weekly overtime hours paid for
Note: Earnings and hours ranges can be specified to suit individual requirements. Hours paid for was not collected for managerial employees.	
Composition of earnings	Average weekly total earnings
	Average weekly ordinary time earnings
	Base pay (includes allowances)
	Overaward, overagreement pay
	Payment by measured result
	Overtime
Average hourly earnings	Average hourly ordinary time earnings
	Average hourly total earnings

## SPECIAL DATA SERVICE *continued*

### VARIABLES

*continued*

Composition of hours  
paid for

Average weekly total hours paid for  
Average weekly ordinary time hours paid for  
Average weekly overtime hours paid for

States and Territories

New South Wales  
Victoria  
Queensland  
South Australia  
Western Australia  
Tasmania  
Northern Territory  
Australian Capital Territory

Sector

Private  
Public

Public Institutional Sector  
(SISCA, 1987 edition)

General government  
Public trading enterprises  
Public financial enterprises

Level of government  
(Public sector)

Commonwealth government  
State government  
Local government

Sex

Males  
Females  
Persons

Status of employee

Working proprietor  
Managerial/executive  
Supervisor  
Apprentice/trainee  
Other employee

Type of employee

Permanent  
Temporary  
Casual

Occupation  
(ASCO Second Edition)

Major group (1-digit codes – as shown in table 3)  
Sub-major group (2-digit codes)  
Minor group (3-digit codes)  
Unit group (4-digit codes)

Industry  
(ANZSIC classification)

Division (1-digit codes – as shown in table 4)  
Subdivision (2-digit codes)  
Group (3-digit codes)  
Class (4-digit codes)

Employer size  
(number of employees)

Under 20  
20–49  
50–99  
100–499  
500–999  
1,000 and over





## SELF-HELP ACCESS TO STATISTICS

*DIAL-A-STATISTIC* For current and historical Consumer Price Index data, call 1902 981 074.  
For the latest figures for National Accounts, Balance of Payments, Labour Force, Average Weekly Earnings, Estimated Resident Population and the Consumer Price Index call 1900 986 400.  
These calls cost 75c per minute.

*INTERNET* [www.abs.gov.au](http://www.abs.gov.au)

*LIBRARY* A range of ABS publications is available from public and tertiary libraries Australia wide. Contact your nearest library to determine whether it has the ABS statistics you require.

## WHY NOT SUBSCRIBE?

*PHONE* +61 1300 366 323

*FAX* +61 3 9615 7848

## CONSULTANCY SERVICES

ABS offers consultancy services on a user pays basis to help you access published and unpublished data. Data that are already published and can be provided within 5 minutes is free of charge. Statistical methodological services are also available. Please contact:

<i>City</i>	<i>By phone</i>	<i>By fax</i>
Canberra	02 6252 6627	02 6207 0282
Sydney	02 9268 4611	02 9268 4668
Melbourne	03 9615 7755	03 9615 7798
Brisbane	07 3222 6351	07 3222 6283
Perth	08 9360 5140	08 9360 5955
Adelaide	08 8237 7400	08 8237 7566
Hobart	03 6222 5800	03 6222 5995
Darwin	08 8943 2111	08 8981 1218



2630600005983

ISSN 1325-7854

RRP \$22.00

*POST* Client Services, ABS, PO Box 10, Belconnen ACT 2616

*EMAIL* [client.services@abs.gov.au](mailto:client.services@abs.gov.au)